



**PREMIER
PROPERTIES**
COMMERCIAL
REAL ESTATE

FOR LEASE

425 PAGE MILL ROAD

Palo Alto, CA

±3,700 Sq. Ft.

Divisible to ±1,850 Sq. Ft.

FINANCIAL SERVICES / RETAIL FOR LEASE
Brand New Class A Building

BRAD EHIKIAN

Partner
dre license #01736391
☎ | 650.618.3001
✉ | brad.ehikian@prprop.com

JON GOLDMAN

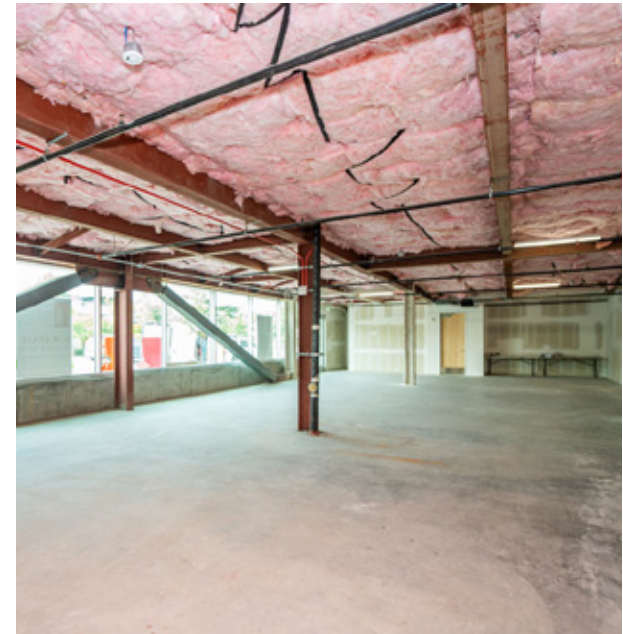
Partner
dre license #01295503
☎ | 650.618.3003
✉ | jon.goldman@prprop.com

JESSE EBNER

Associate
dre license #02055989
☎ | 650.618.3017
✉ | jesse.ebner@prprop.com

PROPERTY DESCRIPTION

- ▶ 13 On-Site Parking Spaces
- ▶ Excellent Signage Opportunities
- ▶ Divisible for Up to Two Tenants
- ▶ High Visibility Building Near the Intersection of El Camino and Page Mill Rd / Oregon Expressway
- ▶ Large, Open Layout Can Be Tailored to Financial Services or Retail
- ▶ Situated Between the AT&T Store and Kelly-Moore Paints
- ▶ Adjacent to Stanford Research Park
- ▶ Traffic Counts Per Day: ±21,000
- ▶ Walking Distance to California Ave Business District & Caltrain Station
- ▶ Minutes from Stanford University and Downtown Palo Alto
- ▶ Available Immediately



BRAD EHIKIAN
Partner
dre license #01736391
☎ | 650.618.3001
✉ | brad.ehikian@prprop.com

JON GOLDMAN
Partner
dre license #01295503
☎ | 650.618.3003
✉ | jon.goldman@prprop.com

JESSE EBNER
Associate
dre license #02055989
☎ | 650.618.3017
✉ | jesse.ebner@prprop.com

AMENITIES AERIAL

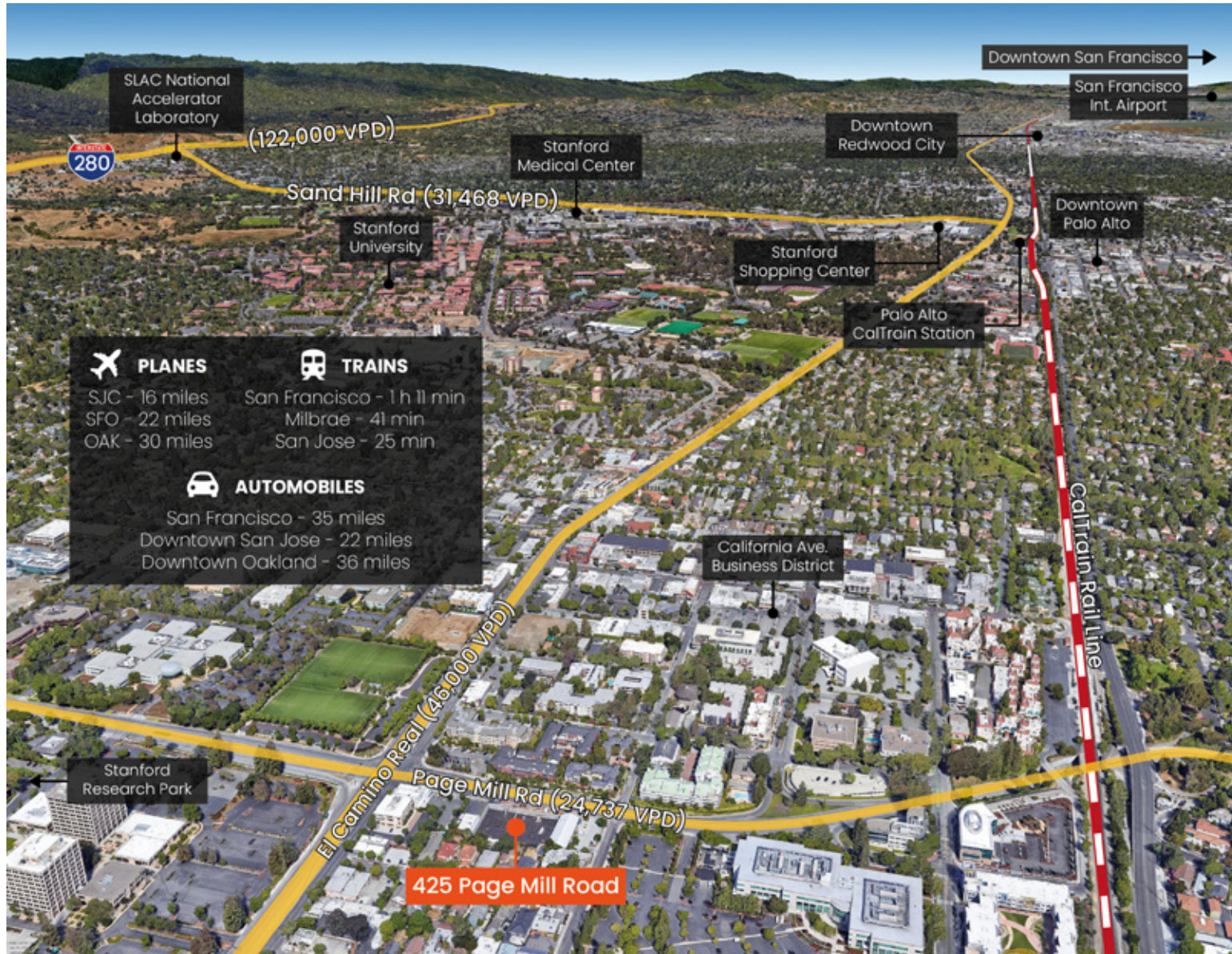


BRAD EHIKIAN
Partner
dre license #01736391
☎ | 650.618.3001
✉ | brad.ehikian@prprop.com

JON GOLDMAN
Partner
dre license #01295503
☎ | 650.618.3003
✉ | jon.goldman@prprop.com

JESSE EBNER
Associate
dre license #02055989
☎ | 650.618.3017
✉ | jesse.ebner@prprop.com

TRANSPORTATION AERIAL



 PLANES	 TRAINS
SJC - 16 miles	San Francisco - 1 h 11 min
SFO - 22 miles	Milbrae - 41 min
OAK - 30 miles	San Jose - 25 min
 AUTOMOBILES	
San Francisco - 35 miles	
Downtown San Jose - 22 miles	
Downtown Oakland - 36 miles	

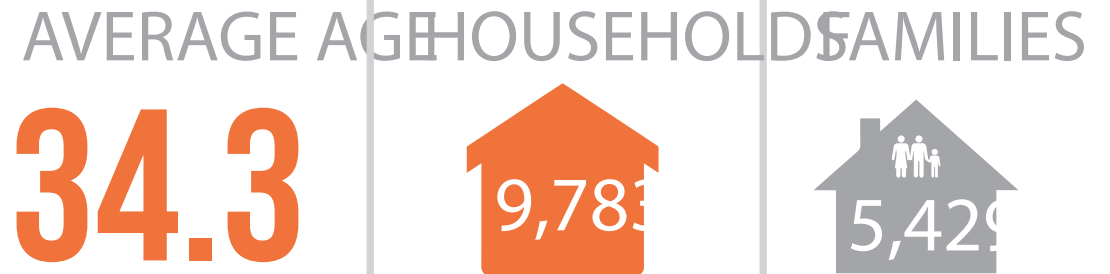


BRAD EHIKIAN
Partner
dre license #01736391
☎ | 650.618.3001
✉ | brad.ehikian@prprop.com

JON GOLDMAN
Partner
dre license #01295503
☎ | 650.618.3003
✉ | jon.goldman@prprop.com

JESSE EBNER
Associate
dre license #02055989
☎ | 650.618.3017
✉ | jesse.ebner@prprop.com

DEMOGRAPHICS



Average Household Size: 2.34 | Owner Occupied Housing Units: 4,055 | Renter Occupied Housing Units: 5,728 | Median Household Income: \$129,293 | Average Household Income: \$187,815

MAJOR EMPLOYERS:

Data for all businesses in area	1 mile	3 miles	5 miles
Total Businesses:	1,470	8,248	14,543
Total Employees:	19,676	151,087	222,070
Total Residential Population:	23,361	143,827	271,906
Employee/Residential Population Ratio (per 100 Residents)	84	105	82

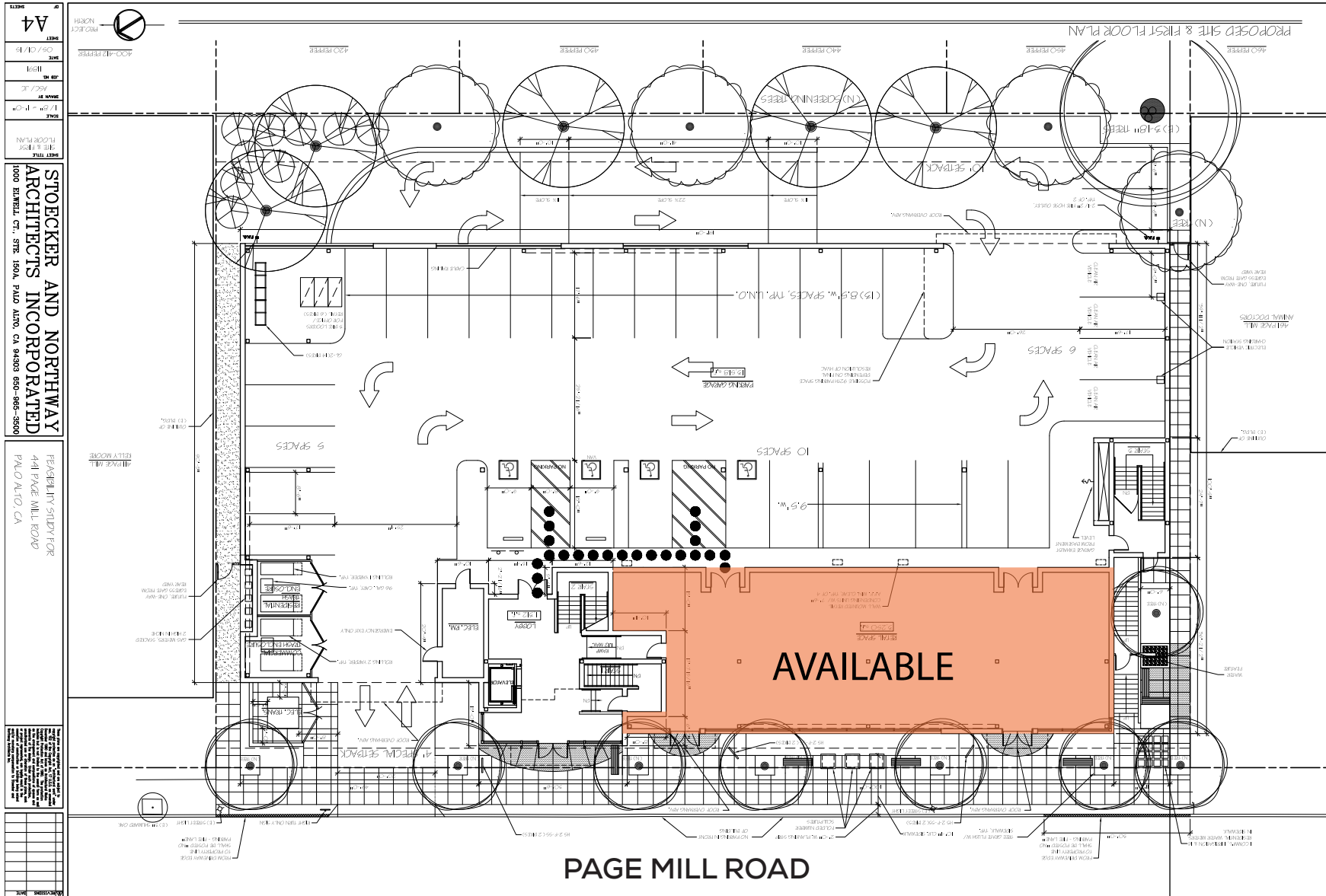


BRAD EHIKIAN
Partner
dre license #01736391
☎ | 650.618.3001
✉ | brad.ehikian@prprop.com

JON GOLDMAN
Partner
dre license #01295503
☎ | 650.618.3003
✉ | jon.goldman@prprop.com

JESSE EBNER
Associate
dre license #02055989
☎ | 650.618.3017
✉ | jesse.ebner@prprop.com

FLOOR PLAN



BRAD EHIKIAN
Partner
dre license #01736391
☎ | 650.618.3001
✉ | brad.ehikian@prprop.com

JON GOLDMAN
Partner
dre license #01295503
☎ | 650.618.3003
✉ | jon.goldman@prprop.com

JESSE EBNER
Associate
dre license #02055989
☎ | 650.618.3017
✉ | jesse.ebner@prprop.com