

BASIS OF BEARINGS:
 LINE A-B AS PER
 REFERENCE PLAT

R = 912.43'
 A = 471.05'
 C = 465.84'
 S 70° 11' 59" E

(85' R/W)

SOUTH COLLEGE ROAD

TRACT L
 7.766 ACRES

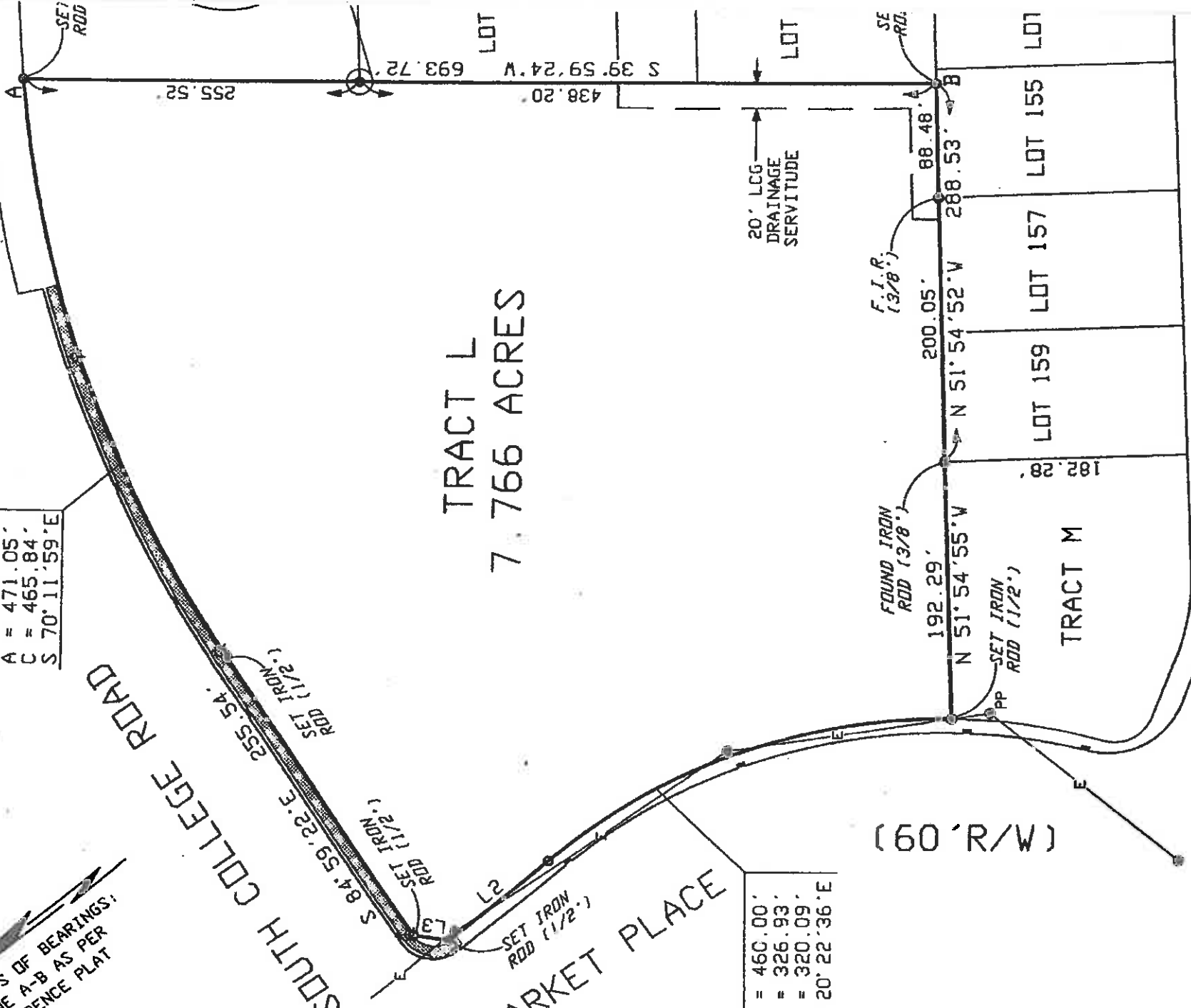
MARKET PLACE

R = 460.00'
 A = 326.93'
 C = 320.09'
 N 20° 22' 36" E

(60' R/W)

TRACT M

INDUSTRIAL PARKWAY (60' R/W)



255.52
 438.20
 S 39° 59' 24" W
 693.72

LOT

LOT

SE RD.

LOT

F.I.R.
 (3/8")

20' LCG
 DRAINAGE
 SERVITUDE

88.48
 288.53

LOT 155

LOT 157

LOT 159

LOT 155

LOT 157

LOT 159

LOT 155

LOT 157

LOT 159

192.29'
 N 51° 54' 55" W

200.05'
 N 51° 54' 52" W

88.48'
 288.53'

SET IRON
 ROD (1/2")

FOUND IRON
 ROD (3/8")

PP

182.88'