

FREESTANDING RESTAURANT BUILDING

Boardman, Ohio



GOODMANREALESTATE.COM
216.381.8200



HIGHLIGHTS

- 6,220 square feet on 1.77 acres available for lease
- Signalized access off of Boardman Poland Road at Tiffany South
- Located directly off of Interstate 680 in a hotel cluster, providing a built in customer base
- High traffic counts in excess of 37,000 vehicles daily
- 100,000+ residents with average household incomes of over \$59,000 within a five mile radius

DEMOGRAPHICS

POPULATION	3 MILE	5 MILE	7 MILE
2023 Projection	57,145	104,780	157,220
2018 Estimate	58,538	107,731	161,764
INCOME	3 MILE	5 MILE	7 MILE
2018 Average	\$63,408	\$59,628	\$57,852
2018 Median	\$50,307	\$43,733	\$41,912
DAYTIME POPULATION	3 MILE	5 MILE	7 MILE
2018 Employees	31,545	45,476	71,216

LEASING INFORMATION

www.goodmanrealestate.com
216.381.8200

CLEVELAND THE OFFICES AT LEGACY VILLAGE
25333 CEDAR ROAD, SUITE 315
CLEVELAND, OH 44124

COLUMBUS CORPORATE HILL II, SUITE 108
100 W. OLD WILSON BRIDGE ROAD
COLUMBUS, OH 43085

ROB YASKANICH

Senior Director

rob@goodmanrealestate.com



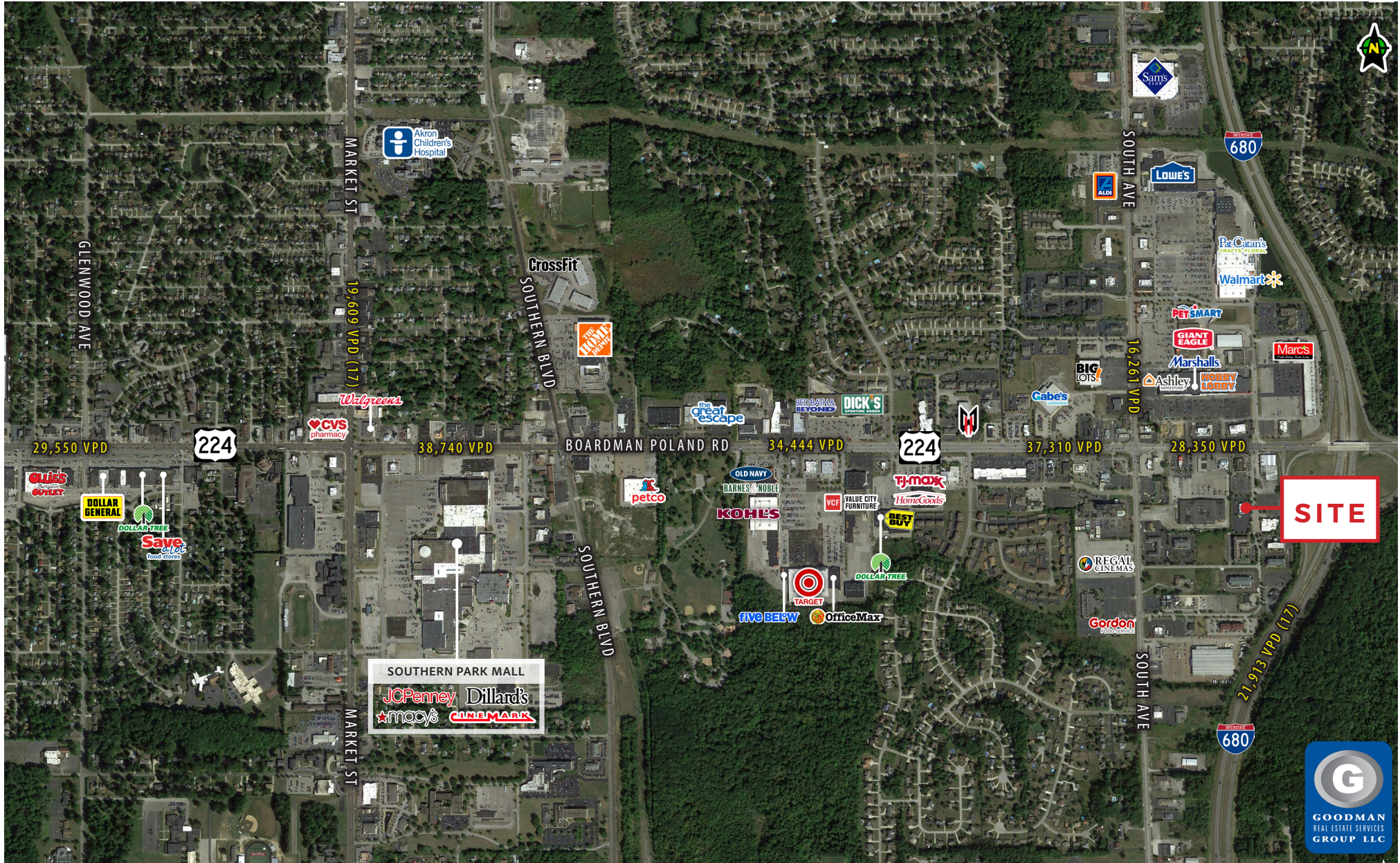
LEASING INFORMATION

www.goodmanrealestate.com
216.381.8200

ROB YASKANICH
Senior Director
rob@goodmanrealestate.com

FREESTANDING RESTAURANT BUILDING

Boardman, Ohio





LEASING INFORMATION

www.goodmanrealestate.com
216.381.8200

ROB YASKANICH
Senior Director
rob@goodmanrealestate.com

FREESTANDING RESTAURANT BUILDING

Boardman, Ohio



THE INFORMATION ABOVE HAS BEEN OBTAINED FROM SOURCES BELIEVED TO BE RELIABLE. GOODMAN REAL ESTATE SERVICES GROUP LLC AND ITS AGENTS, ASSOCIATES, AND EMPLOYEES MAKE NO GUARANTEE, WARRANTY OR REPRESENTATION ABOUT IT. ALL IMAGES CONTAINED HEREIN ARE THE PROPERTY OF GOODMAN REAL ESTATE SERVICES GROUP LLC AND SHALL NOT BE DUPLICATED OR REPRODUCED WITHOUT EXPRESS WRITTEN CONSENT OF GOODMAN REAL ESTATE SERVICES GROUP LLC. YOU ACKNOWLEDGE THAT, AS REQUIRED BY THE STATE OF OHIO, YOU HAVE RECEIVED THE CONSUMER GUIDE TO AGENCY RELATIONSHIPS.

