

**LAND FOR SALE**

**3.81 Acres**

**PROPERTY FEATURES**

- Rectangular development parcel with frontage on Bardstown Rd in Fern Creek area
- Excellent area demographics and high traffic counts (40,400 ADT)
- Zoned R-4

DEMOGRAPHICS	POPULATION	MEDIAN HOUSEHOLD INCOME
1 MILE RADIUS	11,676	\$76,702
3 MILE RADIUS	78,235	\$82,867
5 MILE RADIUS	170,856	\$74,122



For more information, please contact:

**BRENT DOLEN, CCIM**  
Senior Associate  
502 589 5150 ext. 262  
bdolen@commercialkentucky.com

**SAM ENGLISH, CFA**  
Senior Director  
502 589 5150 ext. 244  
senglish@commercialkentucky.com

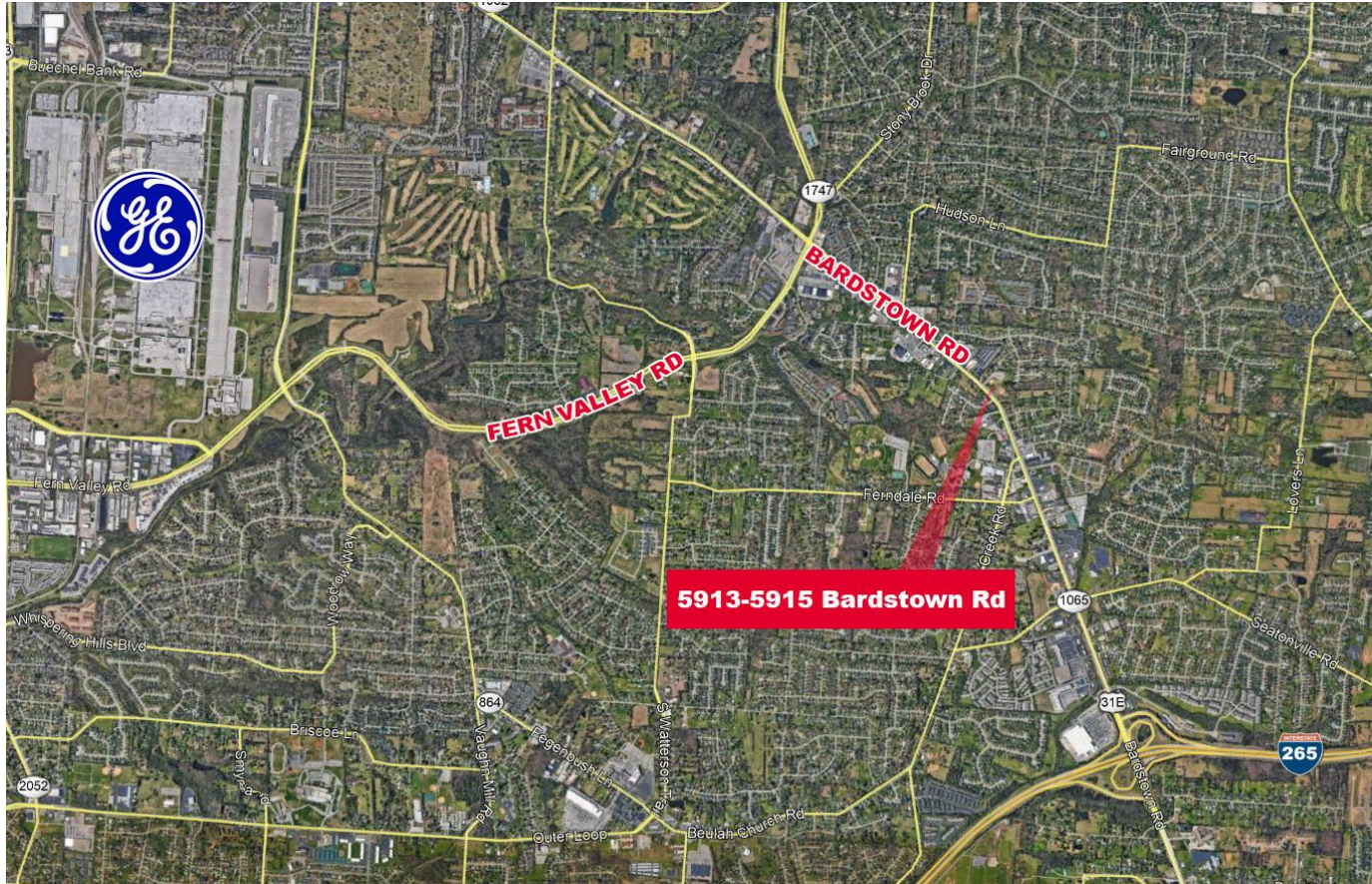
333 E. Main Street, Suite 510  
Louisville, KY 40202  
phone: +1 502 589 5150  
www.CommercialKentucky.com



**FOR SALE**

**5913-5915 BARDSTOWN ROAD**

Louisville, KY 40291



**LOCATION MAP**

For more information, please contact:

**BRENT DOLEN, CCIM**  
Senior Associate  
502 589 5150 ext. 262  
bdolen@commercialkentucky.com

**SAM ENGLISH, CFA**  
Senior Director  
502 589 5150 ext. 244  
senglish@commercialkentucky.com

333 E. Main Street, Suite 510  
Louisville, KY 40202  
phone: +1 502 589 5150  
www.CommercialKentucky.com