



391 SUTTER

AT SUTTER-STOCKTON PLACE

San Francisco, California

For information contact

Michael Gschwend, Sr. Vice President

KIDDER MATHEWS

michaelg@kiddermathews.com

415.229.8908 | LIC #01406626

kiddermathews.com

Stan Cohn, Principal

BRIDGE PROPERTY GROUP

scohn@bridgepg.com

415.257.8880 | LIC #00693932

bridgepg.com



SMALL OFFICE SUITES AVAILABLE



391 SUTTER

AT SUTTER-STOCKTON PLACE

San Francisco, California

BUILDING HIGHLIGHTS



- Prominent corner location at Sutter and Stockton Streets, one block from Union Square
- Parking at the 1,865-stall Sutter/Stockton Garage (across the Street)
- Renovated, including lobby and common areas
- Lobby security
- Creative tenant mix
- High ceilings
- Good natural light
- Quick, simple lease process
- Operable windows
- Easy access to BART and multiple SF Muni Lines
- Easy walk to Union Square hotels, shops, and restaurants. Between Campton Place Hotel and Wilkes Bashford. Hyatt Union Square and new Marriott is across the street.
- Responsive local owner/manager
- Available immediately

Exclusive Leasing Agents:

Michael Gschwend, Sr. Vice President

KIDDER MATHEWS

michaelg@kiddermathews.com

415.229.8908 | LIC #01406626

kiddermathews.com

Stan Cohn, Principal

BRIDGE PROPERTY GROUP

scohn@bridgepg.com

415.257.8880 | LIC #00693932

bridgepg.com



This information supplied herein is from sources we deem reliable. It is provided without any representation, warranty or guarantee, expressed or implied as to its accuracy. Prospective Buyer or Tenant should conduct an independent investigation and verification of all matters deemed to be material, including, but not limited to, statements of income and expenses. Consult your attorney, accountant, or other professional advisor.

391 SUTTER

AT SUTTER-STOCKTON PLACE

San Francisco, California

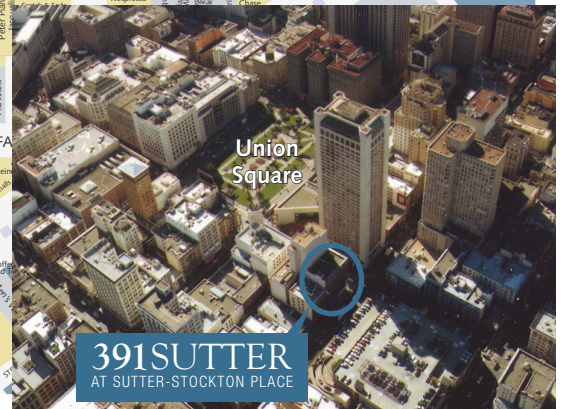
UNION SQUARE MAP



Exclusive Leasing Agents:

Michael Gschwend, Sr. Vice President
 KIDDER MATHIEWS
 michaelg@kiddermathews.com
 415.229.8908 | LIC #01406626
 kiddermathews.com

Stan Cohn, Principal
 BRIDGE PROPERTY GROUP
 scohn@bridgepg.com
 415.257.8880 | LIC #00693932
 bridgepg.com

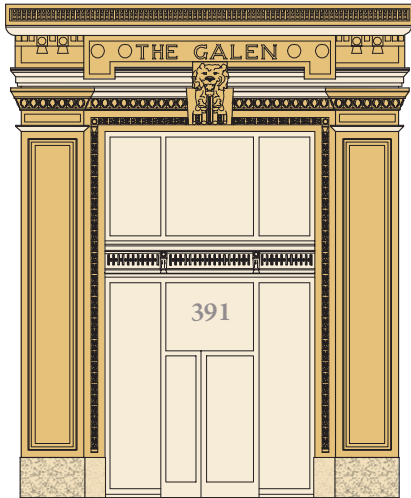


391 SUTTER

AT SUTTER-STOCKTON PLACE

San Francisco, California

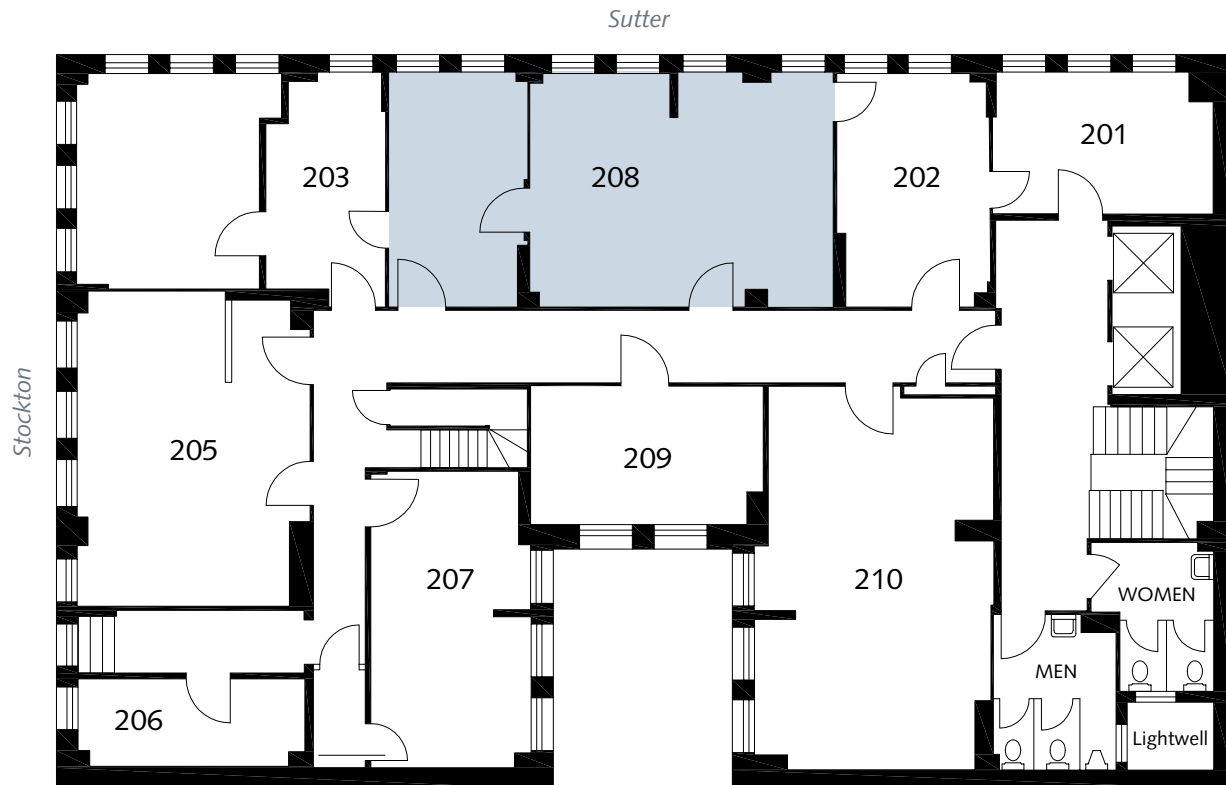
FLOOR PLAN



Exclusive Leasing Agents:

Michael Gschwend, Sr. Vice President
 KIDDER MATHEWS
 michaelg@kiddermathews.com
 415.229.8908 | LIC #01406626
 kiddermathews.com

Stan Cohn, Principal
 BRIDGE PROPERTY GROUP
 scohn@bridgepg.com
 415.257.8880 | LIC #00693932
 bridgepg.com



2ND FLOOR

Space Currently Available

Suite 208	±691 SF
Total Available	±691 SF

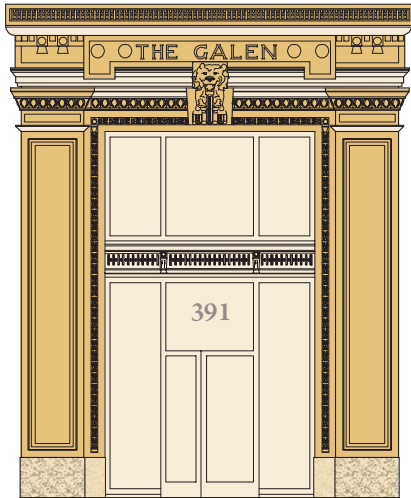


391 SUTTER

AT SUTTER-STOCKTON PLACE

San Francisco, California

FLOOR PLAN



Exclusive Leasing Agents:

Michael Gschwend, Sr. Vice President

KIDDER MATHEWS

michaelg@kiddermathews.com

415.229.8908 | LIC #01406626

kiddermathews.com

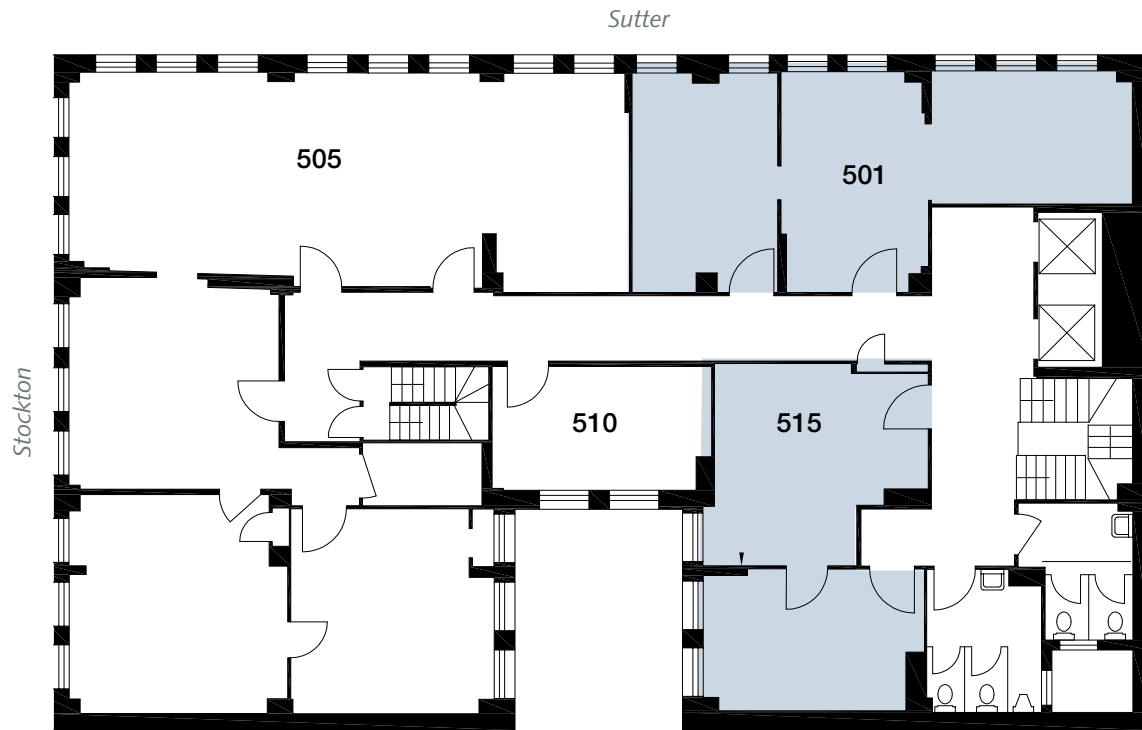
Stan Cohn, Principal

BRIDGE PROPERTY GROUP

scohn@bridgepg.com

415.257.8880 | LIC #00693932

bridgepg.com



5TH FLOOR

Space Currently Available

Suite 501* ±673 SF

Suite 515* ±513 SF

Total Available ±1,186 SF

*Can be leased together or separately

