

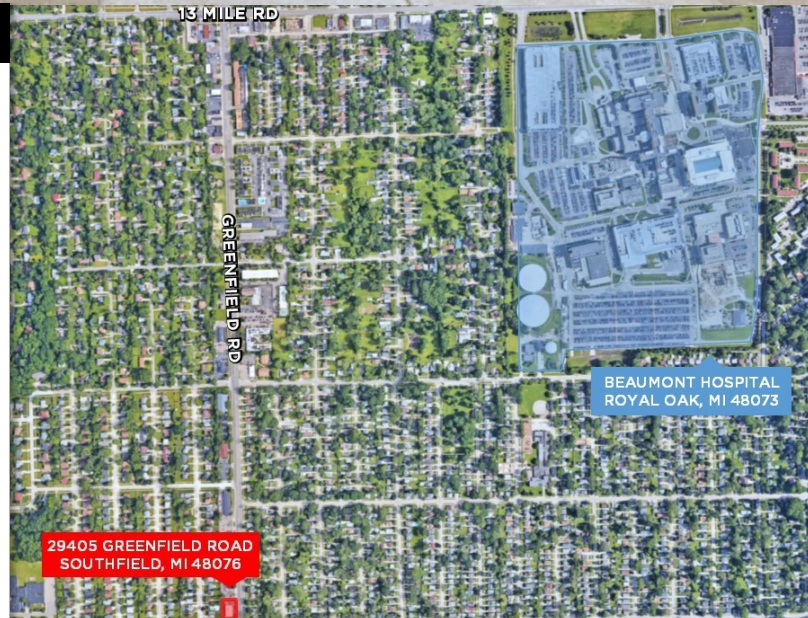
FOR SALE/LEASE

29405 GREENFIELD ROAD
SOUTHFIELD, MI 48076



PROPERTY FEATURES:

- 2,800 SF freestanding commercial building on .35 acres
- Retail, office or medical uses
- 16 car parking spaces
- 1.5 miles to Beaumont Hospital Royal Oak
- Located within densely populated residential area
- Close proximity to I-696
- Access to site from Greenfield Road and Edwards Avenue
- Lease Rate: \$16.50 SF/yr NNN
- Sale Price: \$380,000



FOR MORE INFORMATION PLEASE CONTACT:

TODD HAWLEY
todd.hawley@freg.com

248.324.2000

eCODE 505

FOR SALE/LEASE

29405 GREENFIELD ROAD
SOUTHFIELD, MI 48076



29405 Greenfield Road
Southfield, MI 48076

Map data © 2019 Imagery © 2019, CNES / Airbus, Maxar Technologies, Sanborn, U.S. Geological Survey, USDA Farm Service Agency

TRAFFIC COUNTS

INTERSECTION	CARS PER DAY
Greenfield Rd & Edwards Ave N	22,077
W 12 Mile Rd & Brentwood St W	34,500
12 Mile Rd & Ellwood Ave E	34,456
Greenfield Rd & Webster Ave N	22,410

DEMOGRAPHICS

	1 MILE	3 MILES	5 MILES
Total Households	7,020	55,391	133,158
Total Population	16,726	127,904	307,571
Average HH Income	\$65,788	\$83,824	\$86,583

FOR MORE INFORMATION PLEASE CONTACT:

TODD HAWLEY todd.hawley@freg.com

248.324.2000

eCODE 505