

1631 15th Avenue West | Seattle, Washington 98119

[www.interbayworklofts.com](http://www.interbayworklofts.com)



## AVAILABLE SUITES RANGE FROM 828 SF TO 2,102 SF

Located in Interbay with easy access to Queen Anne, Magnolia, Fremont and Ballard. Each suite is designed to allow for efficiency, comfort and flexibility.

### HIGHLIGHTS

---

Light filled spaces with large, operable windows

---

Full kitchen and restroom with shower

---

Washer and dryer in each suite

---

Each suite is private and individually keyed

---

Outdoor courtyard with tables, seating and a BBQ

---

Wi-Fi/internet hook ups

---

Self-contained HVAC unit in each suite

---

Several large shared conference rooms

---

Large community kitchen/entertaining area

---

Underground parking

---

Onsite gym

---

24/7 access

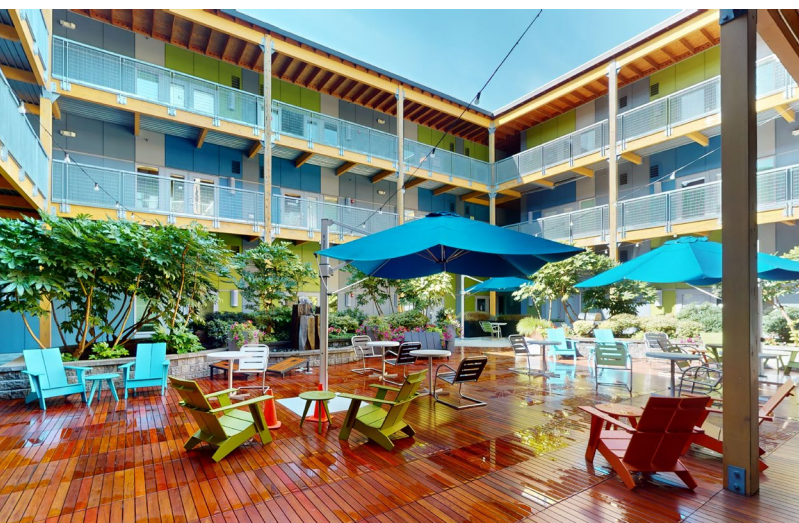
---

Competitive lease rates and flexible terms

---

Pet friendly environment

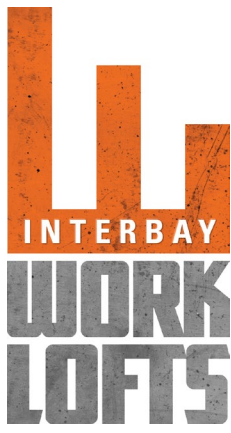
---



**NEWMARK**

**TRACY TURNURE**  
+ 1.425.372.9923  
[tracy.turnure@nmrk.com](mailto:tracy.turnure@nmrk.com)

**CAVAN O'KEEFE**  
+ 1.206.395.2903  
[cavan.okeefe@nmrk.com](mailto:cavan.okeefe@nmrk.com)

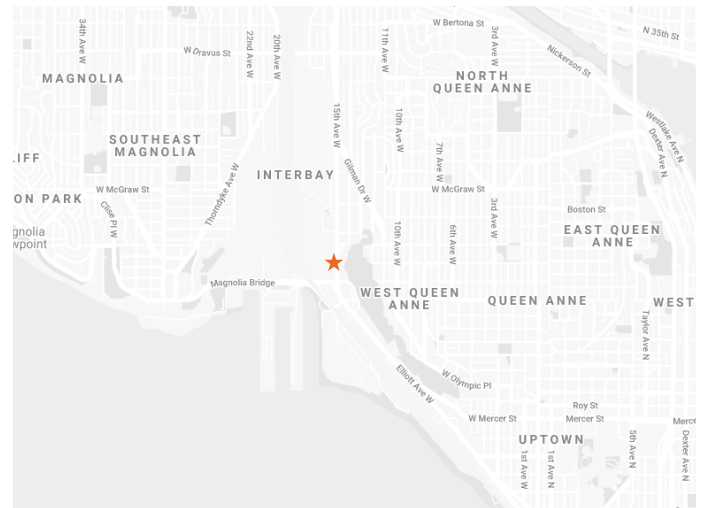


1631 15th Avenue West | Seattle, Washington 98119

[www.interbayworklofts.com](http://www.interbayworklofts.com)



### LOCATION



### AVAILABILITIES

Floor 1	828 - 2,102 SF
Floor 2	830 - 2,000 SF
Floor 3	983 - 1,165 SF

**NEWMARK**

**TRACY TURNURE**  
 + 1.425.372.9923  
[tracy.turnure@nmrk.com](mailto:tracy.turnure@nmrk.com)

**CAVAN O'KEEFE**  
 + 1.206.395.2903  
[cavan.okeefe@nmrk.com](mailto:cavan.okeefe@nmrk.com)

Procuring broker shall only be entitled to a commission, calculated in accordance with the rates approved by our principal only if such procuring broker executes a brokerage agreement acceptable to us and our principal and the conditions as set forth in the brokerage agreement are fully and unconditionally satisfied. Although all information furnished regarding property for sale, rental, or financing is from sources deemed reliable, such information has not been verified and no express representation is made nor is any to be implied as to the accuracy thereof and it is submitted subject to errors, omissions, change of price, rental or other conditions, prior sale, lease or financing, or withdrawal without notice and to any special conditions imposed by our principal. 10200 North Lombard, LLC has a binding contract to purchase the property and authorization from Seller to market the property for lease, pursuant to that agreement Buyer discloses that: a) Buyer does not currently own the Property, (b) no rights of use or occupancy shall arise unless and until Buyer acquires title to the Property and (c) no agreement between Buyer and any prospective tenant shall be binding upon Seller or the Property. JEG110916

# FLOOR 1

Suite	Size	Suite	Size
Suite 104 & 105	2,102 SF	Suite 112	1,000 SF
Suite 107	1,000 SF	Suite 113	828 SF
Suite 108	1,000 SF	Suite 114	1,024 SF
Suite 109	1,000 SF	Suite 116	1,037 SF



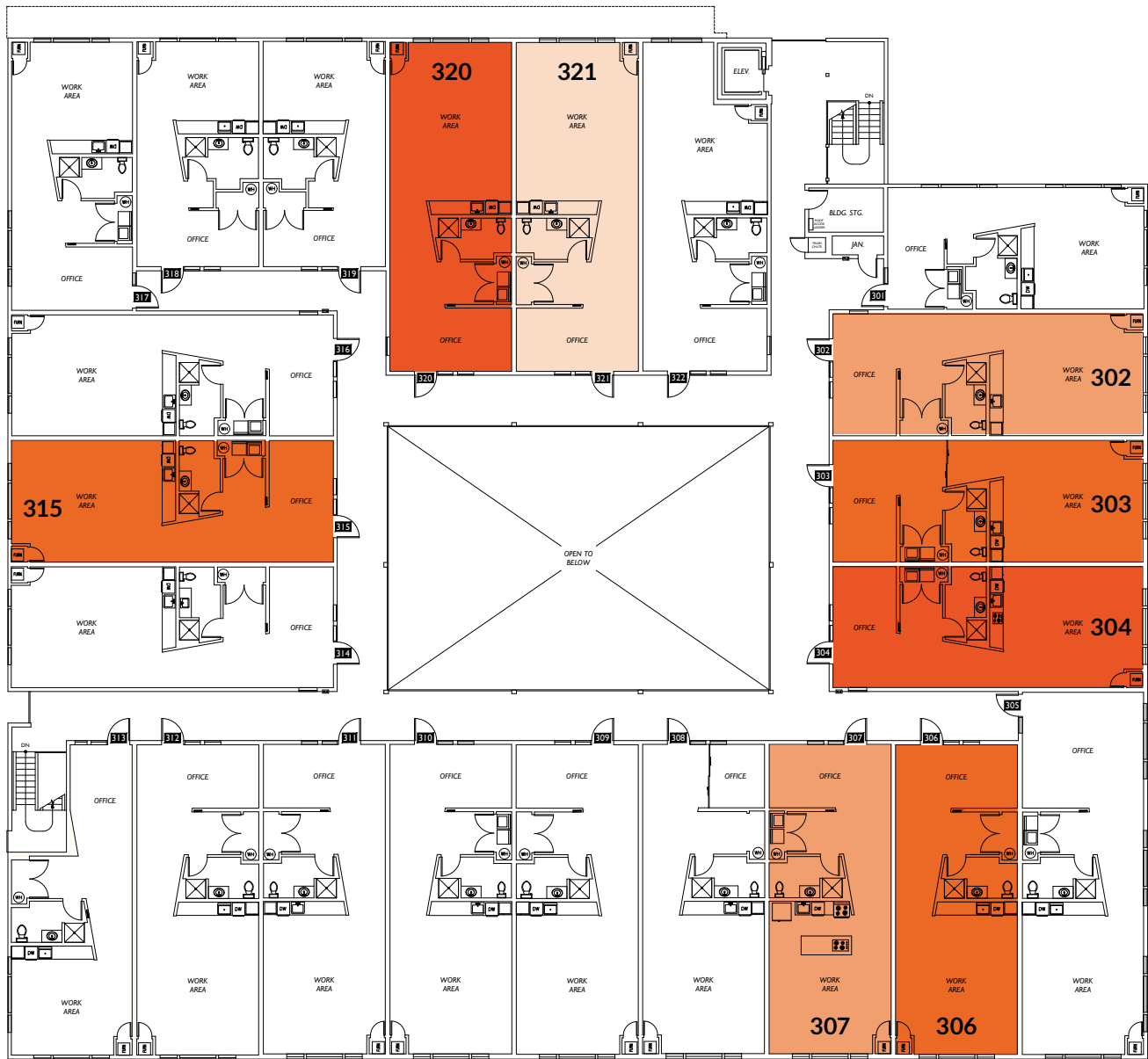
# FLOOR 2

Suite	Size	Suite	Size
Suite 201	830 SF	Suite 215	1,037 SF
Suite 206	1,000 SF	Suite 216	1,037 SF
Suite 212	1,000 SF	Suite 217 & 218	1,800 SF
Suite 214	1,024 SF	Suite 222	983 SF

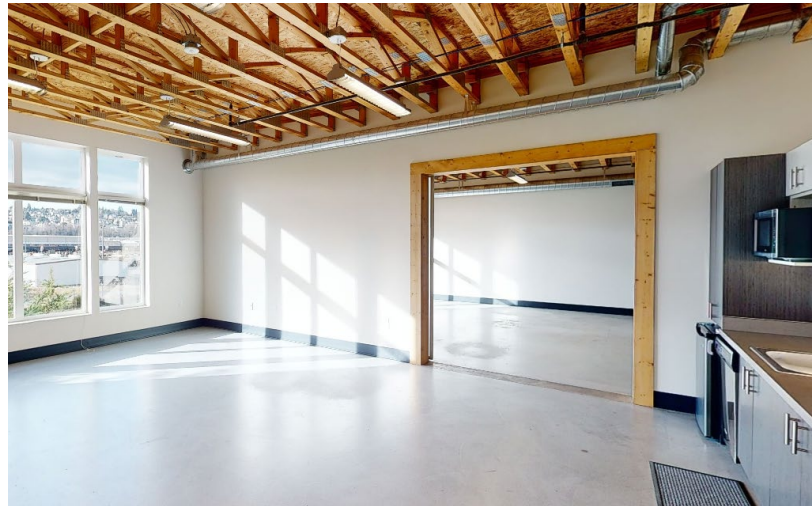


# FLOOR 3

Suite	Size	Suite	Size	Suite	Size
Suite 302	1,000 SF	Suite 307	1,000 SF	Suite 321	1,062 SF
Suite 303	983 SF	Suite 315	1,037 SF		
Suite 304	987 SF	Suite 320	1,062 SF		
Suite 306	1,000 SF				



# INTERBAY WORK LOFTS



**NEWMARK**

**TRACY TURNURE**  
+ 1.425.372.9923  
tracy.turnure@nmrk.com

**CAVAN O'KEEFE**  
+ 1.206.395.2903  
cavan.okeefe@nmrk.com