



CUSHMAN &  
WAKEFIELD

**SEAN MULLEN**

Director  
CA LIC#01845406  
sean.mullen@cushwake.com

**KRIS KALMBACH**

Senior Director  
CA LIC#01436668  
kris.kalmbach@cushwake.com



FOR LEASE

**1515**

RESPONSE ROAD

SACRAMENTO, CA

**+1 916 288 4800**

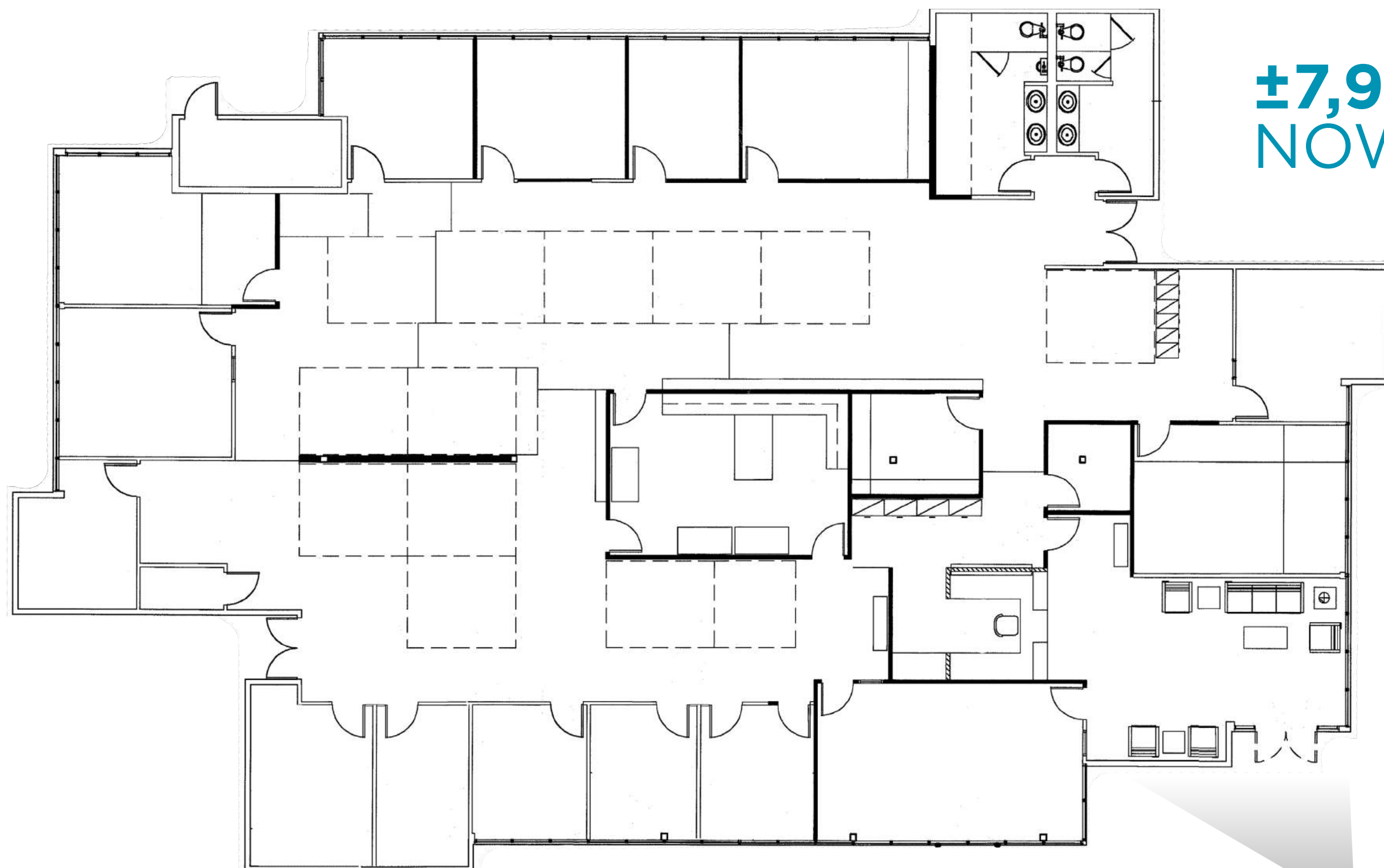
**CALL FOR MORE INFORMATION**

## PROPERTY HIGHLIGHTS

- Unique single tenant opportunity in highly identifiable building in the heart of Point West
- Above standard existing tenant improvements
- Close proximity to Arden Fair Mall, Cal Expo, and numerous other retail and service amenities.
- Ideally situated close to Business 80 and Highway 160 - Central to all of greater Sacramento.
- Potential plug & play opportunity

## BUILDING DETAILS

- Total Size: ±7,917 SF
- Total Floors: 1
- Parking Ratio: 4.0/1,000



**±7,917 RSF**  
**NOW AVAILABLE**



**16 MIN** SACRAMENTO INTERNATIONAL AIRPORT  
**10 MIN** SACRAMENTO CENTRAL BUSINESS DISTRICT

**DOWNTOWN SACRAMENTO**



**LOCATION**



1515 RESPONSE ROAD



1. MARKET SQUARE	
UNITED ARTIST THEATRE	MIKUNIS
CALIFORNIA PIZZA KITCHEN	PLUTO'S
SUBWAY	BARNES & NOBLE
PANDA EXPRESS	DOS COYOTES
TERIYAKI GRILL	PEET'S COFFEE
ULTA BEAUTY	FEDEX
CATHERINES	AT&T STORE

2. ARDEN MALL	
MACY'S	MICHAEL KORS
JCPENNEY	ARMANI EXCHANGE
APPLE	SEARS
COACH	NORDSTROM
MAC	LULUEMON
SEASON 52	GEN KOREAN BBQ
STARBUCKS	JAMBA JUICE

3. HOWEBOUARDEN	
CENTURY THEATRES	NORDSTROM RACK
HOMEGOODS	CONTAINER STORE
STARBUCKS	CARTERS
PINKBERRY	JAMBA JUICE
BONCHON	KURA REVOLVING SUSHI BAR
AHI POKI	CAFE RIO MEXICAN GRILL
APPLEBEE'S	CHEVRON

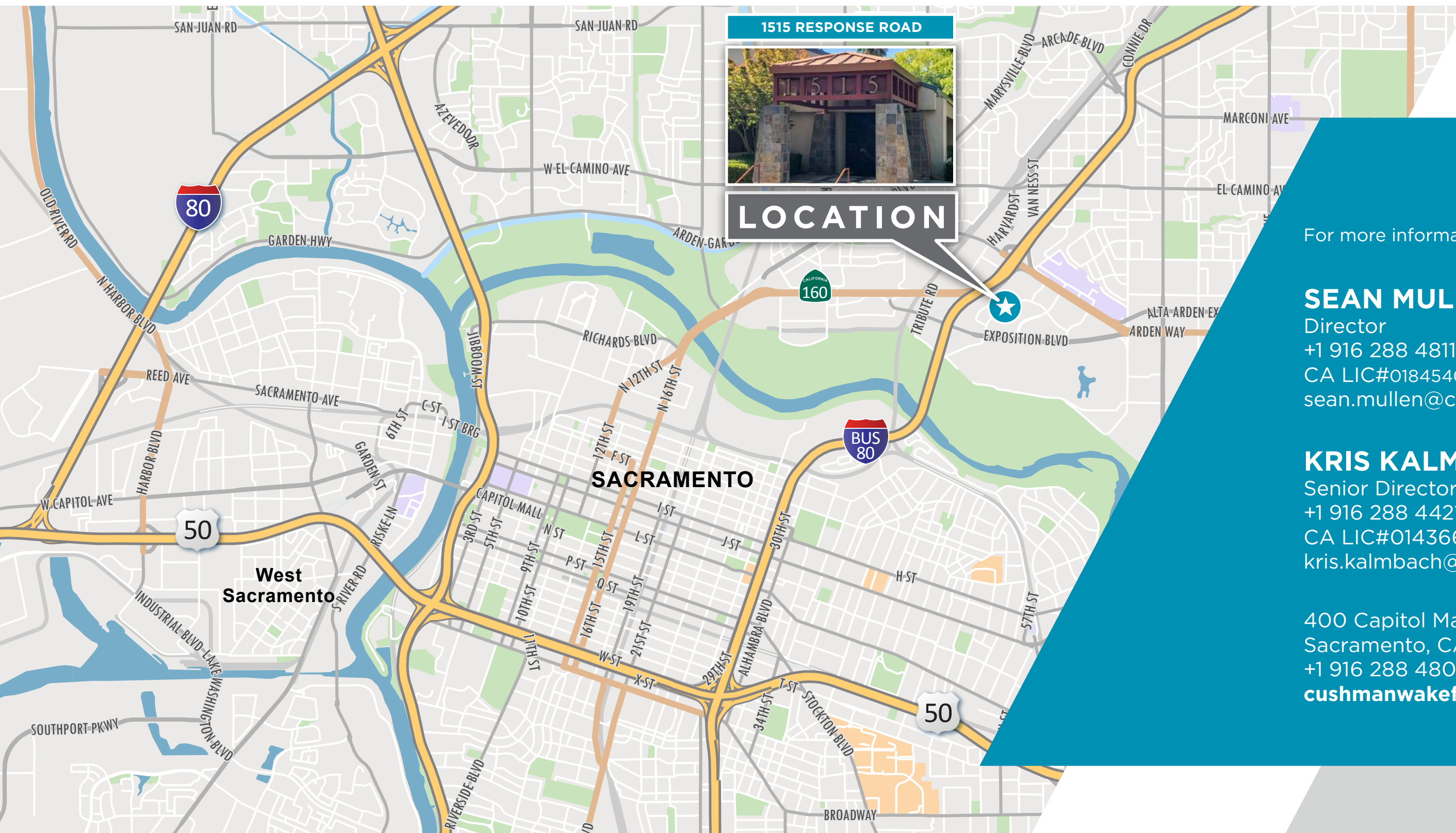
4. CAL EXPO	
80+ EVENTS PER YEAR	
4M+ ANNUAL VISITORS	

5. POINT WEST PLAZA	
KOHL'S	OLD NAVY
HOBBY LOBBY	PIER I IMPORTS
PETCO	DAVIDS BRIDAL
STARBUCKS	HOBBY LOBBY
OLIVE GARDEN	BLACK BEAR



# PROPERTY PHOTOS





**1515 RESPONSE ROAD**



**LOCATION**

For more information please contact:

**SEAN MULLEN**

Director  
+1 916 288 4811  
CA LIC#01845406  
sean.mullen@cushwake.com

**KRIS KALMBACH**

Senior Director  
+1 916 288 4421  
CA LIC#01436668  
kris.kalmbach@cushwake.com

400 Capitol Mall, Suite 1800  
Sacramento, CA 95814  
+1 916 288 4800  
**cushmanwakefield.com**

