



# RETAIL SPACE FOR LEASE



**Sammamish  
Lakeside Plaza  
3310 E Lake Samm.  
Pkwy SE  
Sammamish, WA  
98075**

## FEATURES

- 1,540—6,300 SF
- \$20/RSF, NNN
- Exposure from busy E. Lake Sammamish Pkwy traffic
- Minutes to Issaquah and Redmond

SUHRCO manages a diverse portfolio of commercial and multifamily residential properties in the Puget Sound region. Established in 1973, the company employs more than 300 experienced professionals dedicated to meeting the management, leasing and brokerage needs of building owners, tenants, and condominium/homeowner association boards and owners.

## Contact:

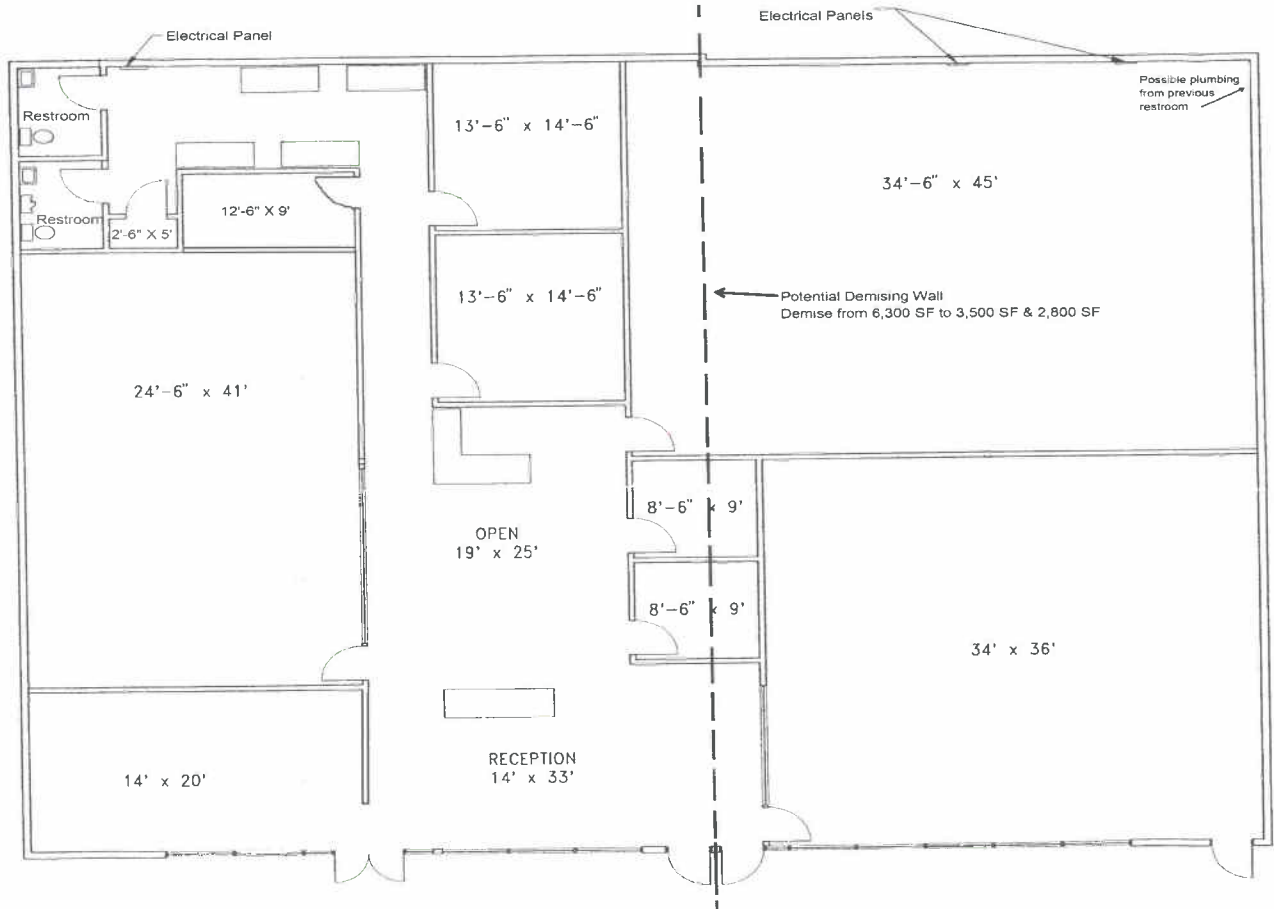
Peter Townsend, RPA® Email: [petert@suhrco.com](mailto:petert@suhrco.com)  
Vanessa Murphy, RPA® Email: [vanessam@suhrco.com](mailto:vanessam@suhrco.com)  
T: (425) 455-1950 F: (425) 462-1943  
2010 156th Avenue NE, Suite 100, Bellevue, WA 98007

**SUHRCO Management, Inc., AMO®**



# RETAIL SPACE FOR LEASE

6,300 SF: Demise to 3,500 SF & 2,800 SF



**Sammamish Lakeside Plaza**  
**3310 E. Lake Sammamish Pkwy SE**  
**Sammamish, WA 98075**

Contact:  
Peter Townsend, RPA® Email: [petert@suhrco.com](mailto:petert@suhrco.com)  
Vanessa Murphy, RPA® Email: [vanessam@suhrco.com](mailto:vanessam@suhrco.com)

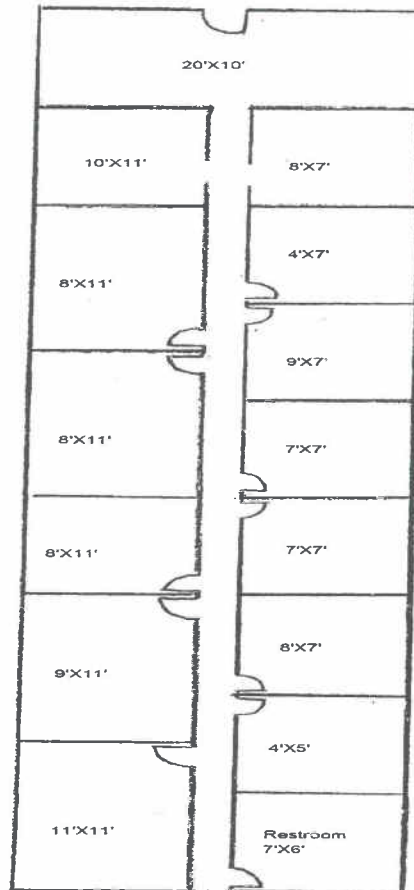
T: (425) 455-1950  
F: (425) 462-1943  
2010 156th Avenue NE, Suite 100





# RETAIL SPACE FOR LEASE

1,540 SF



**Sammamish Lakeside Plaza**  
**3310 E. Lake Sammamish Pkwy SE**  
**Sammamish, WA 98075**

Contact:  
Peter Townsend, RPA® Email: [petert@suhrco.com](mailto:petert@suhrco.com)  
Vanessa Murphy, RPA® Email: [vanessam@suhrco.com](mailto:vanessam@suhrco.com)

T: (425) 455-1950  
F: (425) 462-1943  
2010 156th Avenue NE, Suite 100

