

324 GRAHAM AVENUE

WILLIAMSBURG, BROOKLYN



RETAIL SPACE
FOR LEASE

WILLIAMSBURG BROOKLYN

324 GRAHAM AVENUE

SPACE HIGHLIGHTS

LOCATION

Corner of Graham
& Devoe Streets

SPACE

1,800 SF

CEILING HEIGHT

9.3 FT

FRONTAGE

100 FT

DIMENSIONS

80 FT x 22.5 FT

ZONING

R6

OCCUPANCY

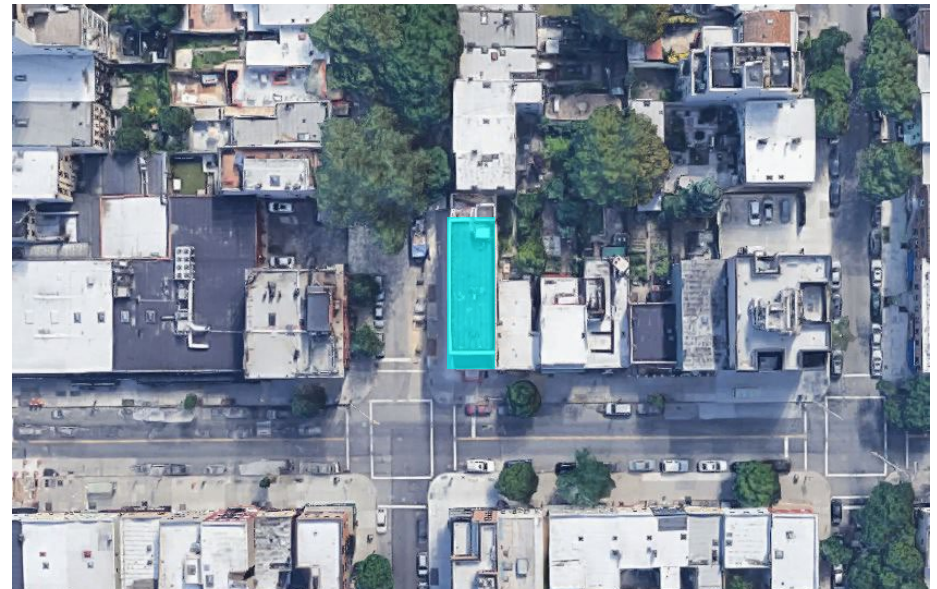
Immediate

ASKING RENT

Upon Request

HIGHLIGHTS

- New Building
- Restaurant / Bar Ok
- Corner Location
- Floor-to-Ceiling Windows
- HVAC
- Basement / Lower Level
- ADA Restrooms
- High Ceilings



WILLIAMSBURG BROOKLYN

324 GRAHAM AVENUE

SPACE DEVELOPMENT



WILLIAMSBURG BROOKLYN

324 GRAHAM AVENUE

SPACE DEVELOPMENT



NEIGHBORHOOD DEMOGRAPHICS



156,368

POPULATION
WITHIN 1-MILE
RADIUS



34 Years

AVERAGE
POPULATION
AGE



22.42%

POPULATION
GROWTH
SINCE 2010



\$57,709

AVERAGE HHI
WITHIN 1-MILE
RADIUS



5,362

TOTAL BUSINESSES
WITHIN 1-MILE
RADIUS



\$1.4 bn

ANNUAL SPENDING
WITHIN 1-MILE
RADIUS

WILLIAMSBURG BROOKLYN

324 GRAHAM AVENUE

NEIGHBORHOOD & TRANSPORTATION

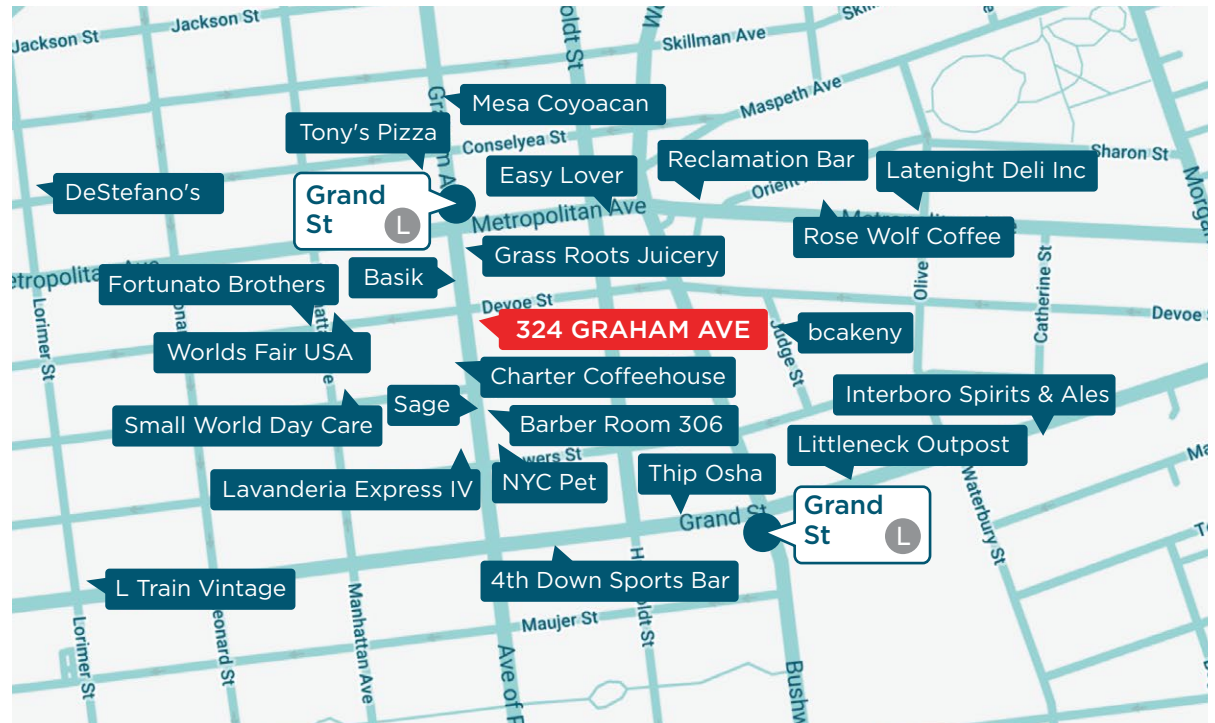
NEIGHBORHOOD TENANTS

- Fortunato Brothers
- Tony's Pizza
- Charter Coffeehouse
- Basik
- DeStefano's Steakhouse
- Sage
- 4th Down Sports Bar
- Interboro Spirits & Ales
- L Train Vintage
- Mesa Coyoacan
- NYC Pet
- Grass Roots Juicery
- Lavanderia Express IV
- Small World Day Care Center
- Barber Room 306
- Worlds Fair USA
- Easy Lover
- bcakeny
- Thip Osha
- Grass Roots Juicery
- Reclamation Bar
- Rose Wolf Coffee
- Latenight Deli Inc
- Littleneck Outpost

TRANSPORTATION

- 2 Min Walk at Graham Avenue (0.1 mi)
- 6 Min Walk at Lorimer Street (0.3 mi)
- 6 Min Walk at Grand Street (0.3 mi)
- 8 Min Walk at Metropolitan Avenue (0.4 mi)
- 12 Min Walk at Montrose Avenue (0.6 mi)

- L
- L
- L
- G
- L



WILLIAMSBURG BROOKLYN

324 GRAHAM AVENUE

CONTACT



JOSEPH DIPIAZZA
917.789.3009
JDIPIAZZA@EXRNY.COM

DAVID DUBINSKY
718.308.7111
DAVID.D@EXRNY.COM

