

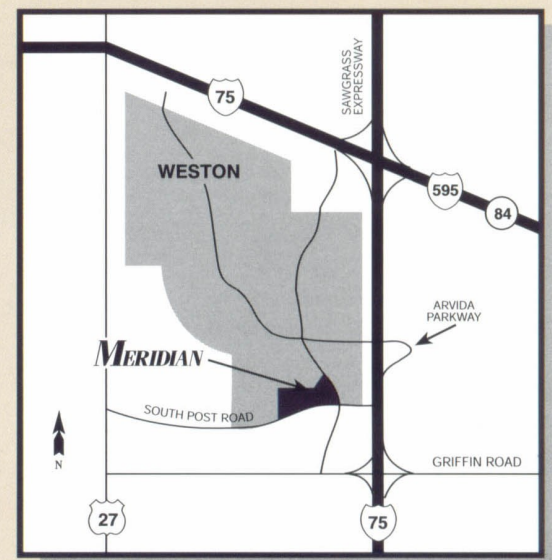
3040 & 3050 Universal Boulevard

Meridian Business Campus at Weston (1-75 & Sawgrass Expressway)

Located at the main entrance of Meridian Business Campus, 3040 & 3050 Universal Boulevard are a creative cost alternative for full service office users. The two building, single story complex - completely surrounded by glass - integrates upscale main lobbies, interior tenant entries and common restroom facilities.

In addition to a lakeside location, 3040 & 3050 Universal Boulevard also enjoy the meticulous landscape which has become a trademark of Meridian Business Campus.

- Individual tenant sign program
- Lakeside frontage
- 4.5/1,000 parking ratio
- Expansive glass line surrounding building
- Class "A" finishes
- Full service management
- Common area restrooms



For further information, contact:

Andrew Ackerman
ComReal Fort Lauderdale

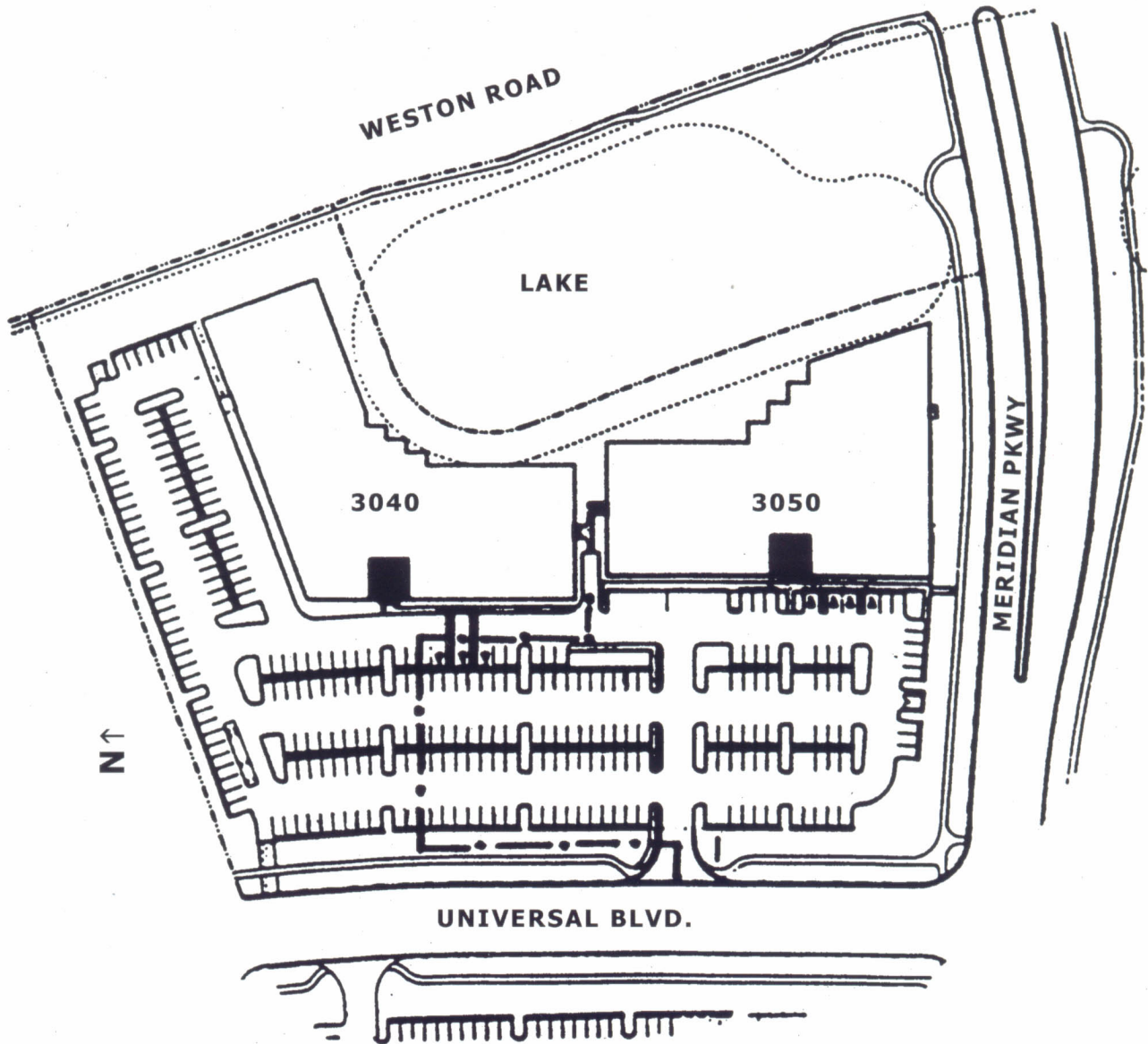


954/385-0000
3050 Universal Boulevard,
Suite 100
Weston, Florida 33331

MERIDIAN
BUSINESS CAMPUS AT WESTON

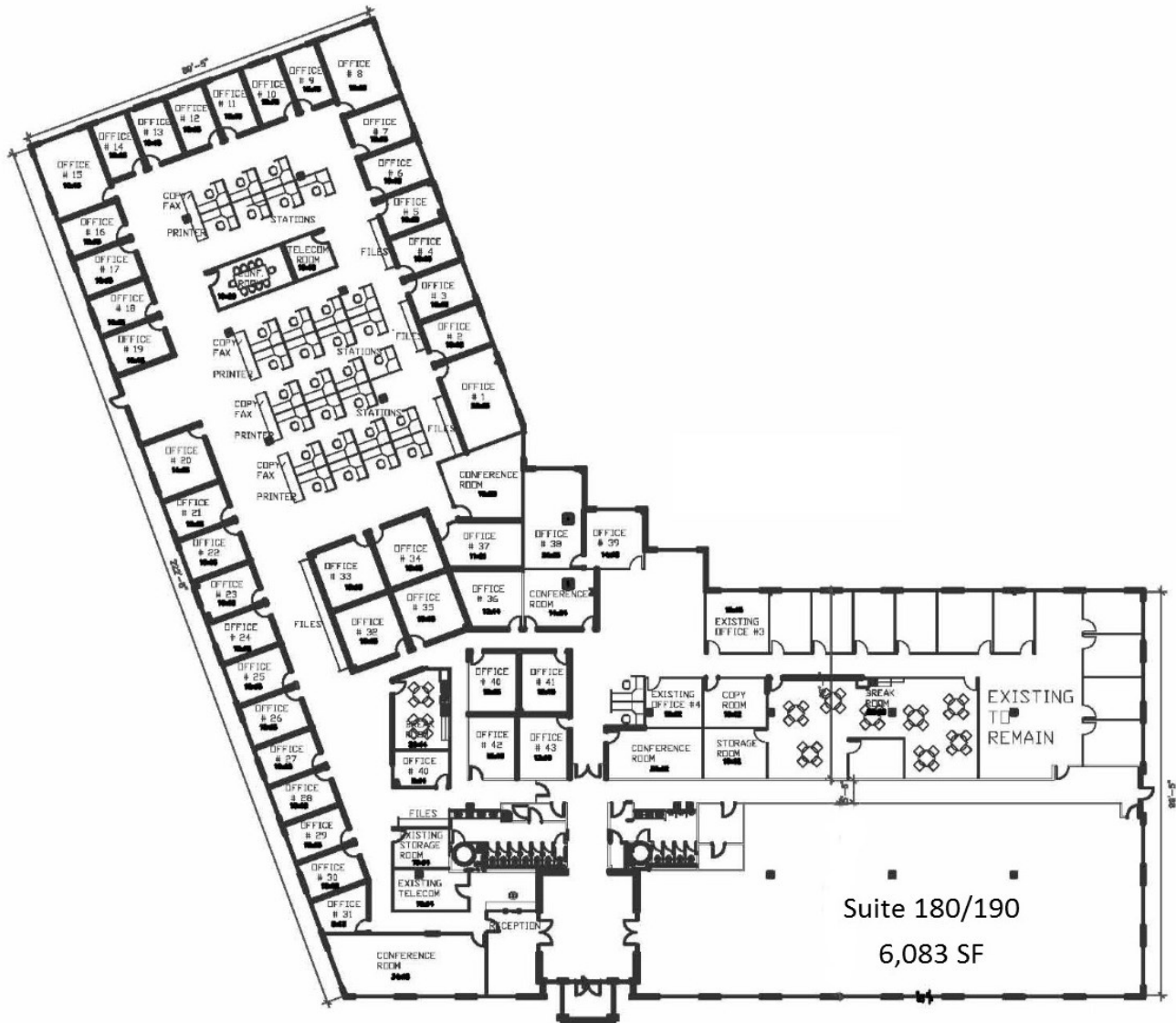
Site Plan

3040 & 3050 Universal Boulevard



Meridian Business Campus

3040 Universal Boulevard, Weston, FL 33331



Suite 100 - 34,153 SF

FOR LEASING INFORMATION:

Andrew Ackerman | aackerman@comreal.com

954.385.0000

ComReal
FT. LAUDERDALE
COMMERCIAL REAL ESTATE SERVICES