

FOR LEASE INDUSTRIAL



1555 IL Route 75 E, Freeport, IL 61032
THE KST BUILDING

Property Information

AVAILABLE

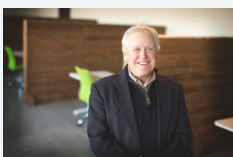
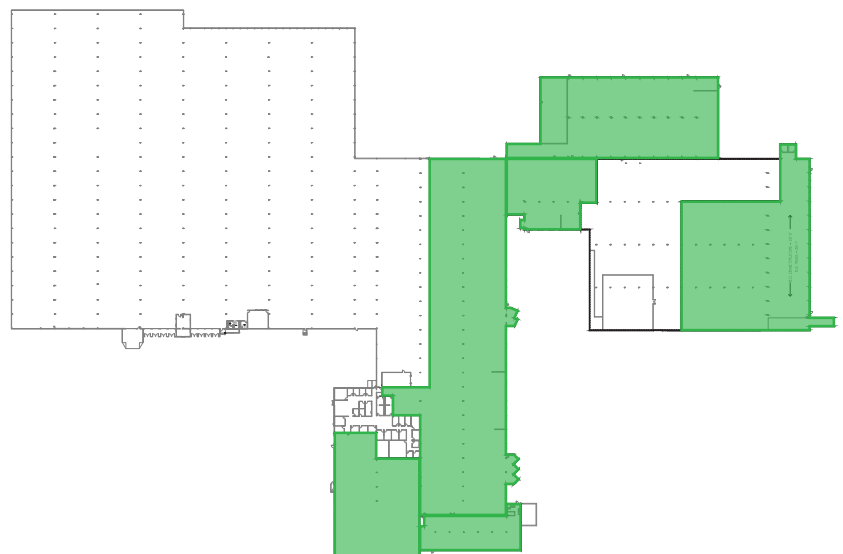
170,541 SF

RATE

\$2.50–3.50 PSF, NNN

FEATURES

- Shared 10-Ton Crane
- Located in the Stephenson County Enterprise Zone



William E Mears, CCIM, SIOR
Managing Broker
608-314-8251
bill@mcguiremears.com

MCGUIREMEARS.COM

©2017 Coldwell Banker Real Estate LLC, dba Coldwell Banker Commercial Affiliates. All Rights Reserved. Coldwell Banker Real Estate LLC, dba Coldwell Banker Commercial Affiliates fully supports the principles of the Equal Opportunity Act. Each Office is Independently Owned and Operated. Coldwell Banker Commercial and the Coldwell Banker Commercial Logo are registered service marks owned by Coldwell Banker Real Estate LLC, dba Coldwell Banker Commercial Affiliates. All information contained herein has been obtained from sources deemed reliable. However, no warranty or guarantee is made as to the accuracy of the information.

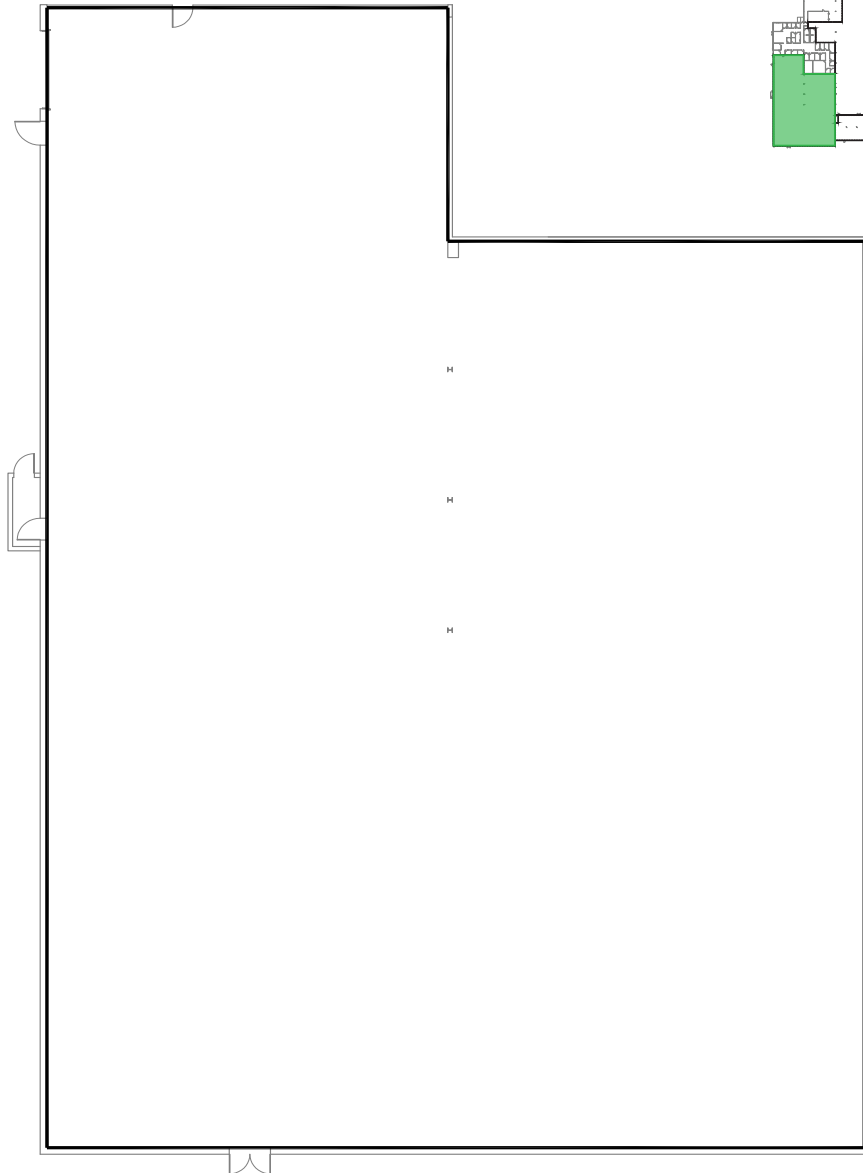
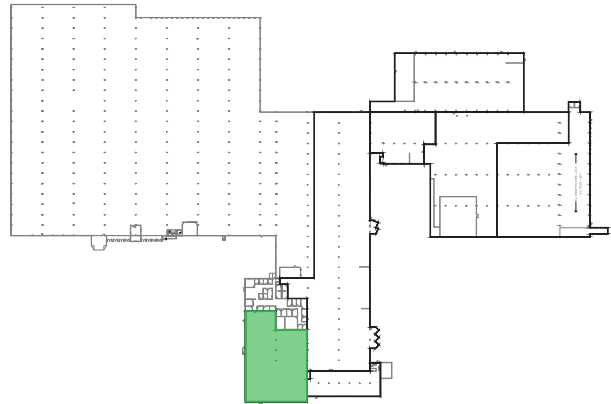
Coldwell Banker Commercial
McGuire Mears & Associates
400 Midland Ct Ste 101
Janesville, WI 53546
608-752-6325

FOR LEASE

INDUSTRIAL

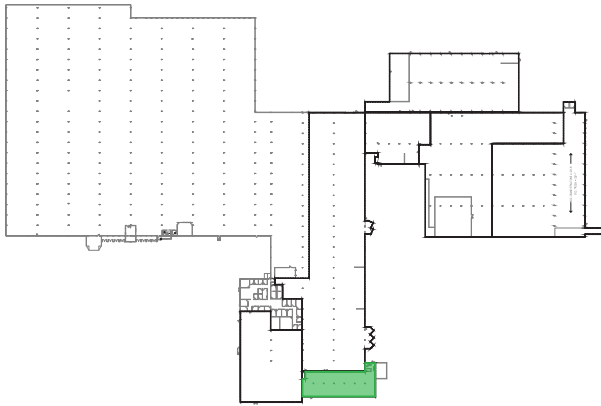
SPACE 1: 18,614 SF

Space Type: Industrial
Clear Height: 10'3"
Sprinkled: 100%
Docks: Can be added
At-Grade Doors: One (1)



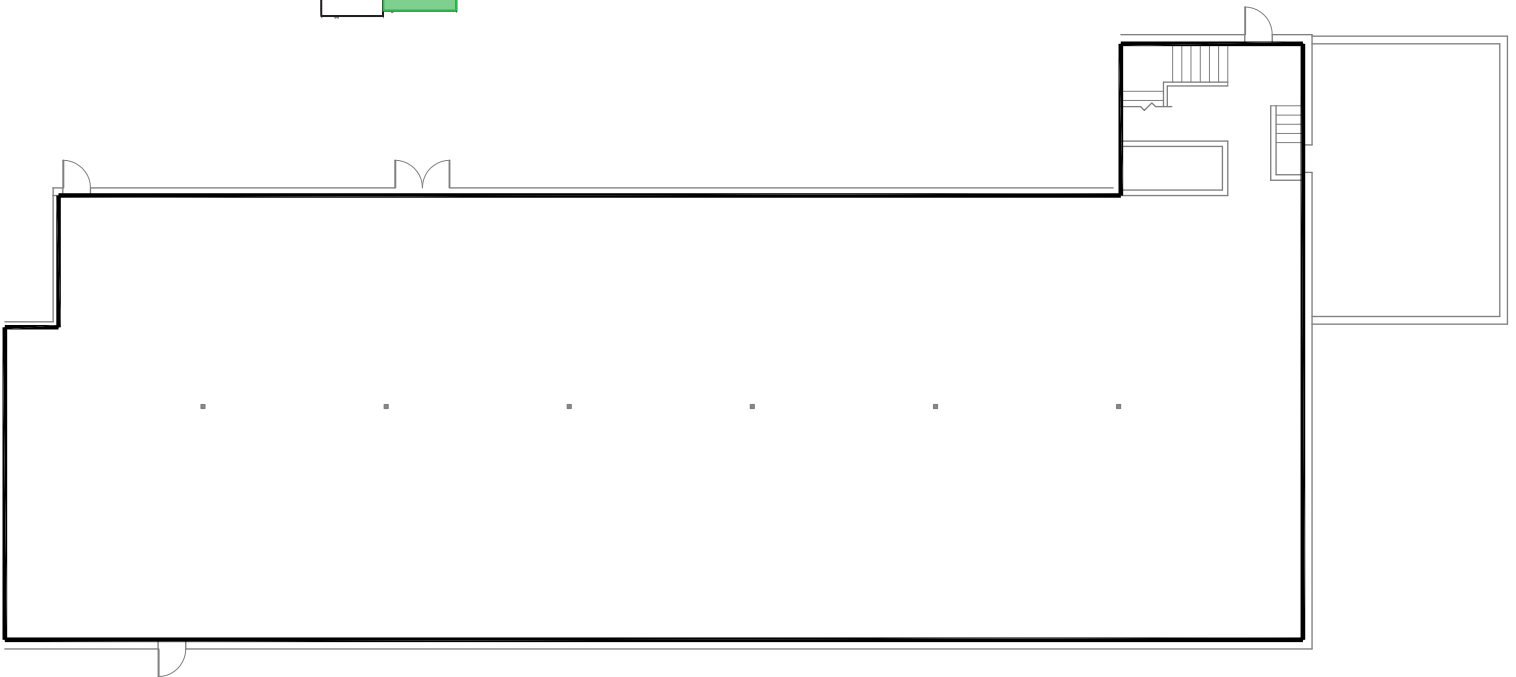
FOR LEASE

INDUSTRIAL



SPACE 2: 14,132 SF

Space Type:	Two-Story Office
Clear Height:	11'10"
Sprinkled:	100%
Rate:	Negotiable

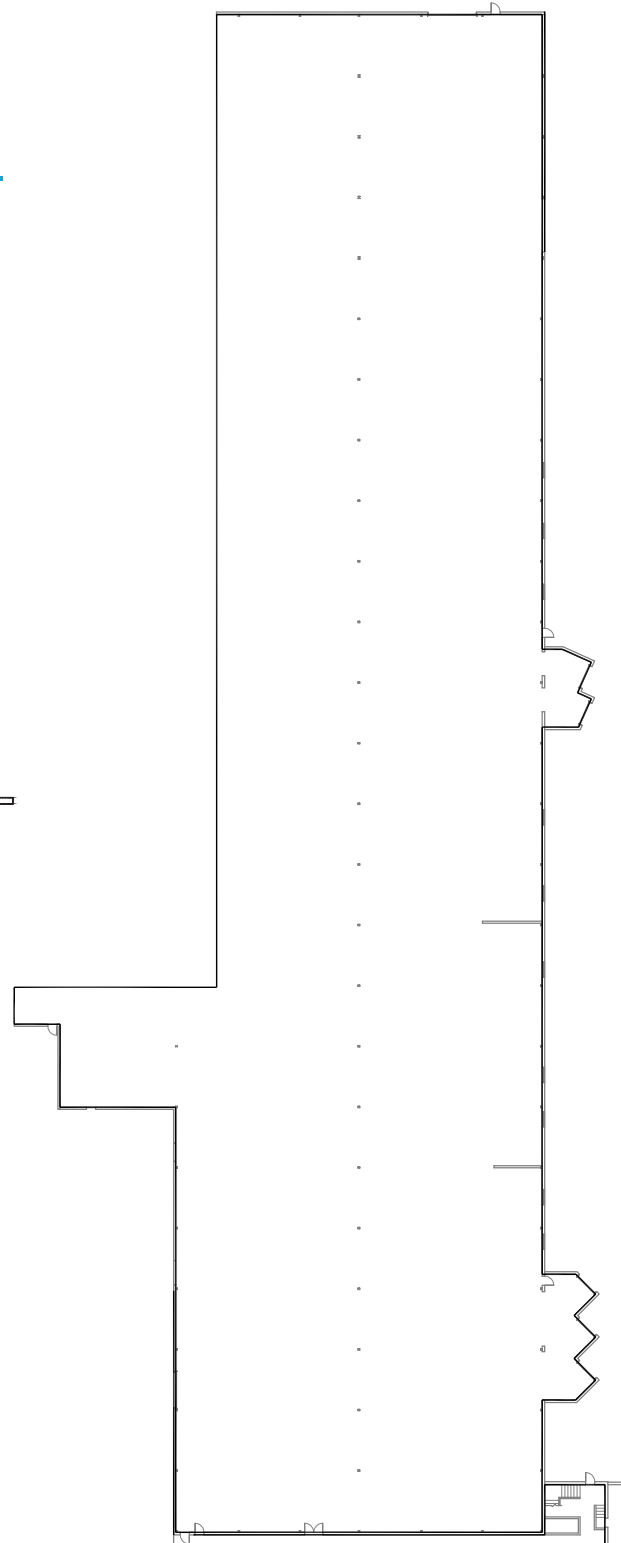
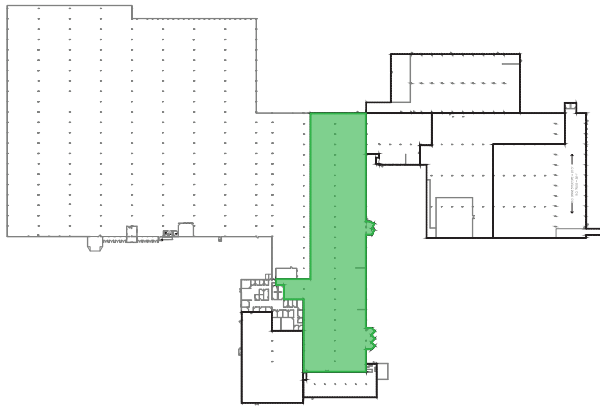


FOR LEASE

INDUSTRIAL

SPACE 3: 58,487 SF

Space Type:	Industrial
Clear Height:	13'
Sprinkled:	100%
Docks:	Five (5)
At-Grade Doors:	One (1)

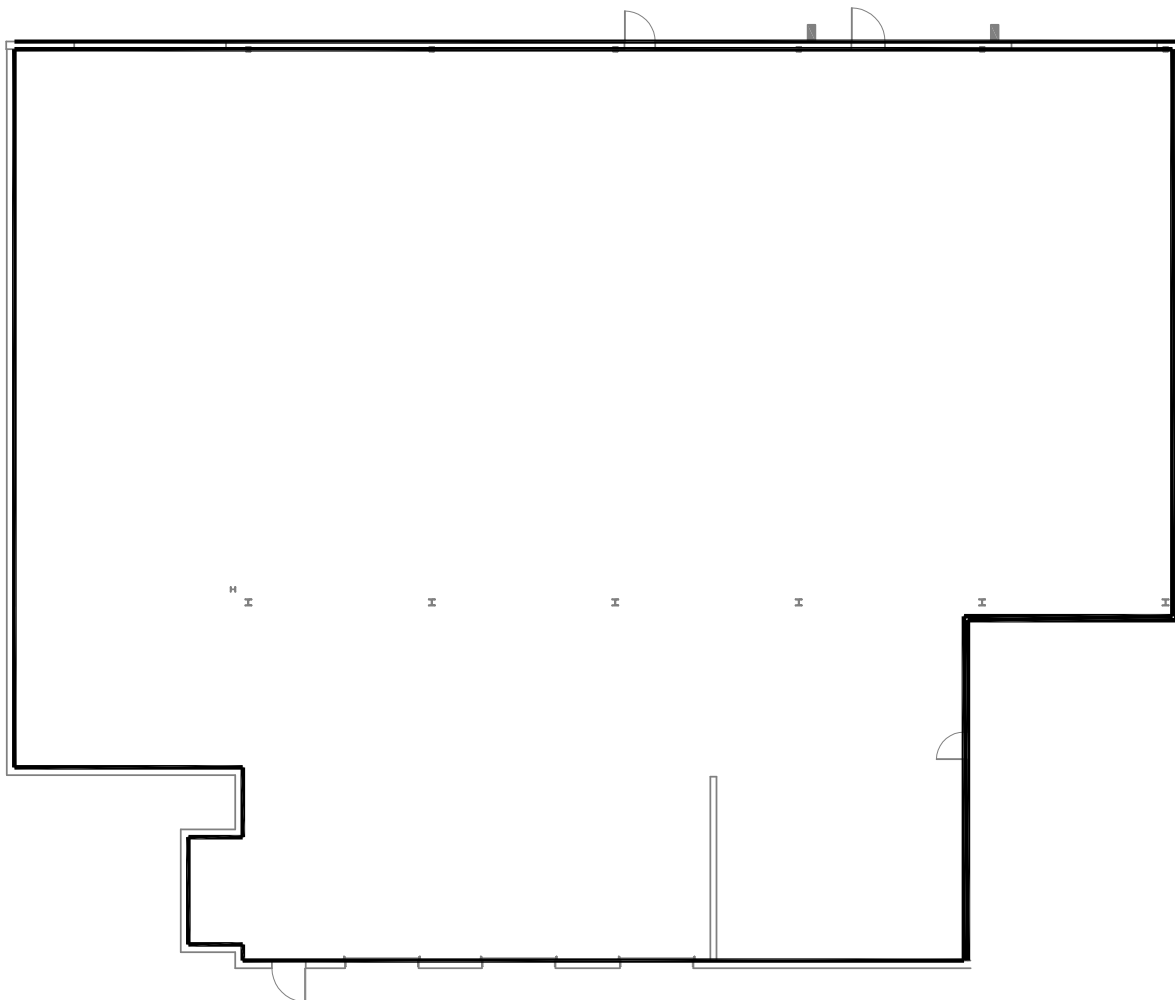
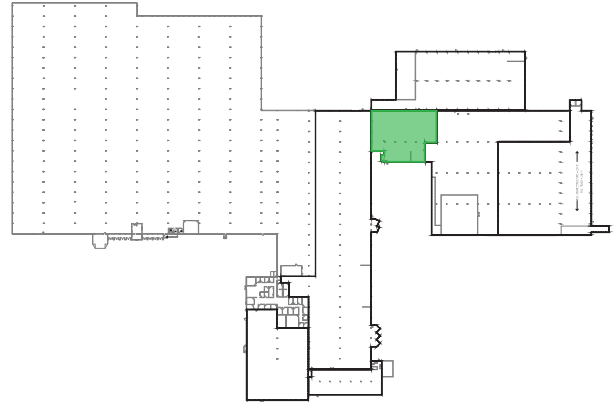


FOR LEASE

INDUSTRIAL

SPACE 4: 11,177 SF

Space Type: Industrial
Clear Height: 17'2"
Sprinkled: 100%
Docks: Three (3)

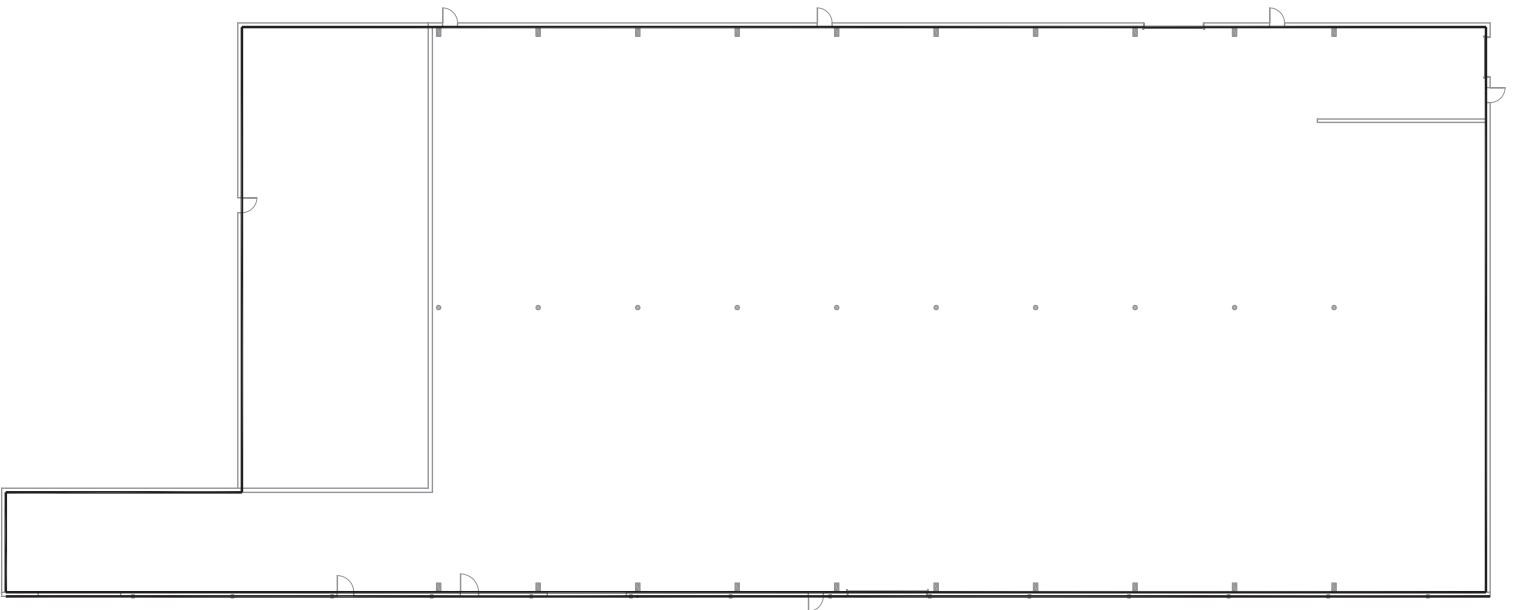
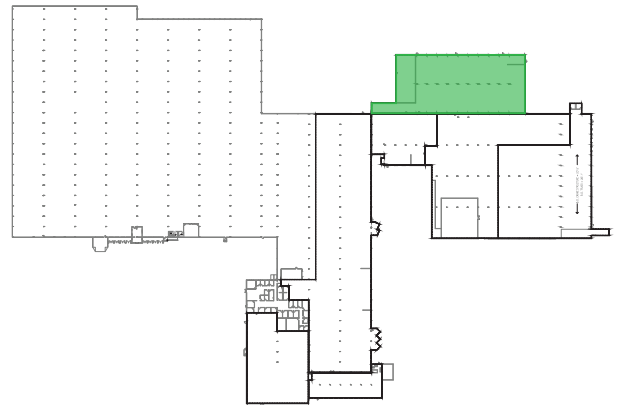


FOR LEASE

INDUSTRIAL

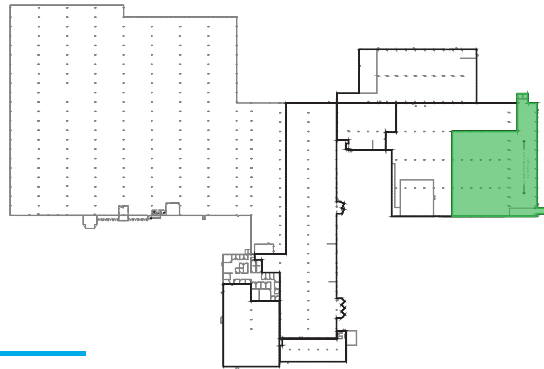
SPACE 5: 29,134 SF

- Space Type:** Industrial
- Clear Height:** 22'8"–25'10"
- Sprinkled:** 100%
- Docks:** One (1); additional possible
- At-Grade Doors:** One (1); additional possible



FOR LEASE

INDUSTRIAL



SPACE 6: 38,997 SF

- Space Type:** Industrial
- Clear Height:** 17'2" (20'5" under hook in crane bay)
- Sprinkled:** 100%
- Bathrooms:** Two (2)
- Crane Bay:** 10-Ton
- Docks:** Five (5) shared

