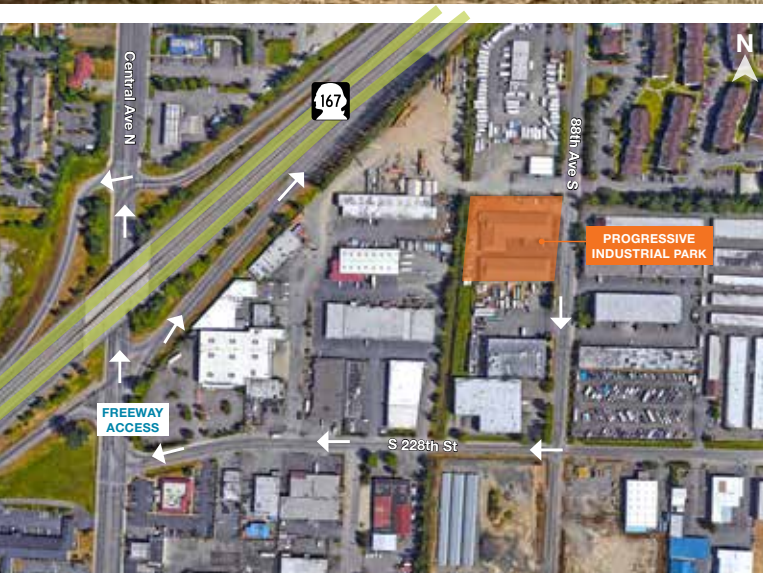


FOR LEASE

Progressive Industrial Park

22639 88th Avenue South, Kent, WA



FEATURES

2,580 SF total

\$2,193, NNN
Blended \$0.85 PSF
Triple net \$0.26 PSF

10' GL

12' clear height

Industrial flex use

Newly remodeled office space

Easy access to Hwy-167 and I-405

CONTACT

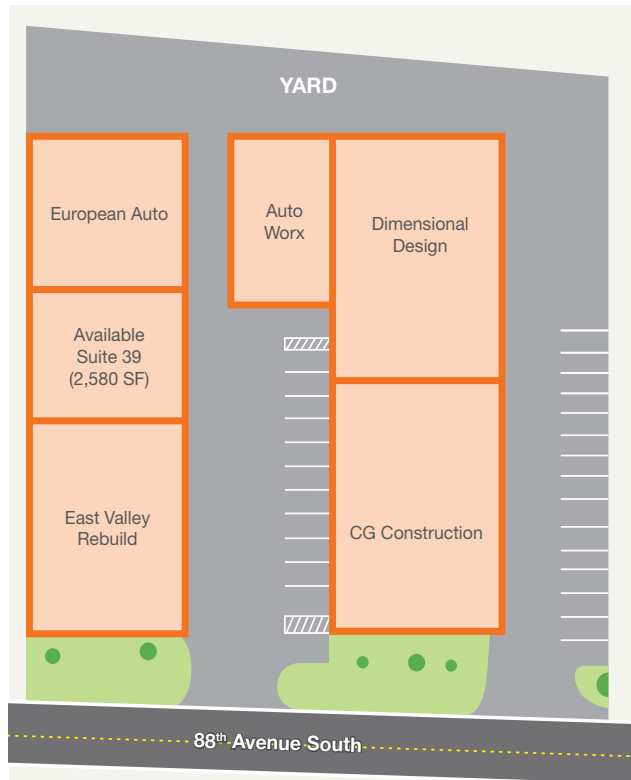
Bjorn Brynestad
206.248.7354
bjornb@kiddermathews.com



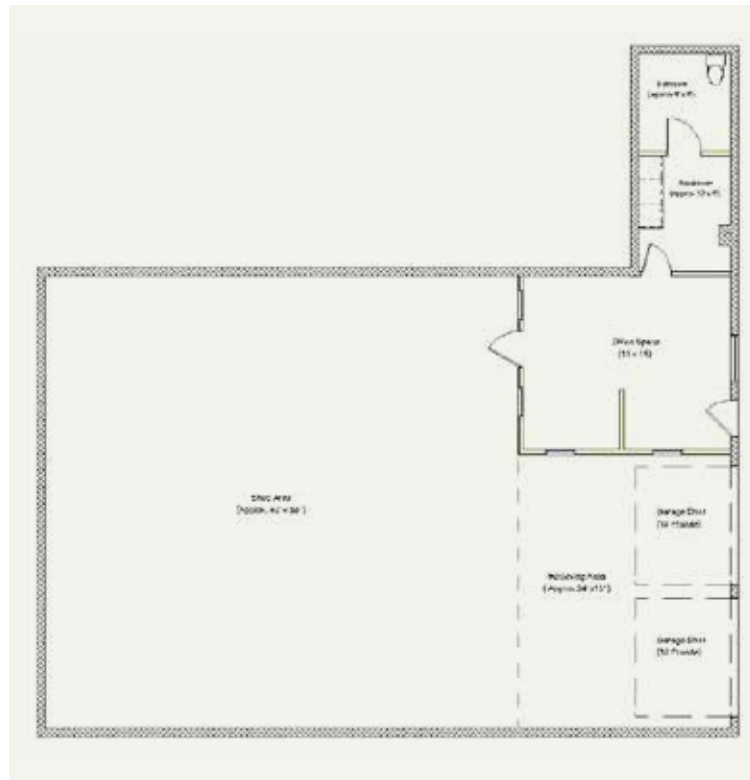
FOR LEASE

Progressive Industrial Park

SITE PLAN



FLOOR PLAN



CONTACT

Bjorn Brynestad
206.248.7354
bjornb@kiddermathews.com

LOCATION HIGHLIGHTS



20 Miles to Port of Seattle

19 Miles to Port of Tacoma



19 Miles to Seattle

160 Miles to Portland

