

FOR SALE

+10,366 SF

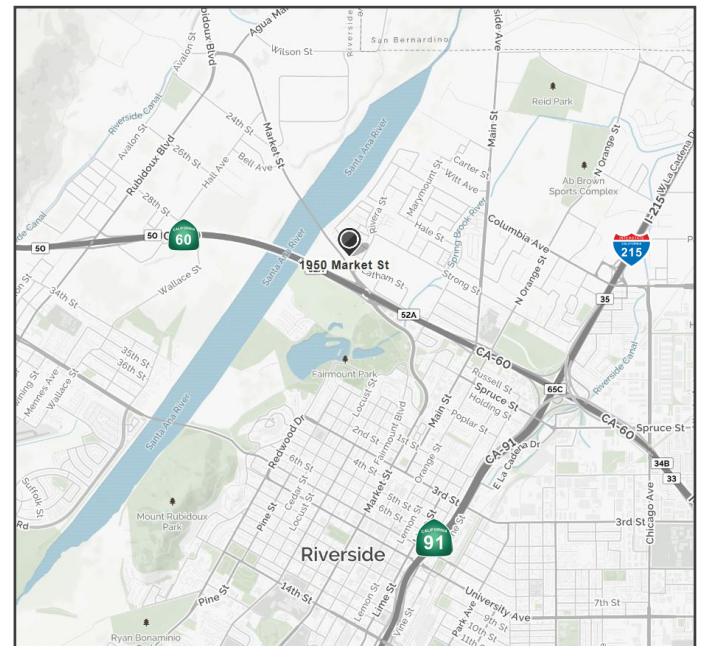
REDWINE & SHERRILL LAW BUILDING

1950 Market Street | Riverside, CA 92501



FEATURES

- » Single Story Stand Alone Office Building
- » Situated on 1.46 Acres
- » 5:1,000 SF Parking Ratio
- » Outdoor Patio Area
- » Zoned C2 (Restricted Commercial)
- » 0.2 Miles to 60 Freeway
- » Building Signage



Lee & Associates, Inc. - Riverside
4193 Flat Rock Drive, Suite 100
Riverside, CA 92505
Corporate ID 01048055

RICH ERICKSON
Senior Vice President
951.276.3637

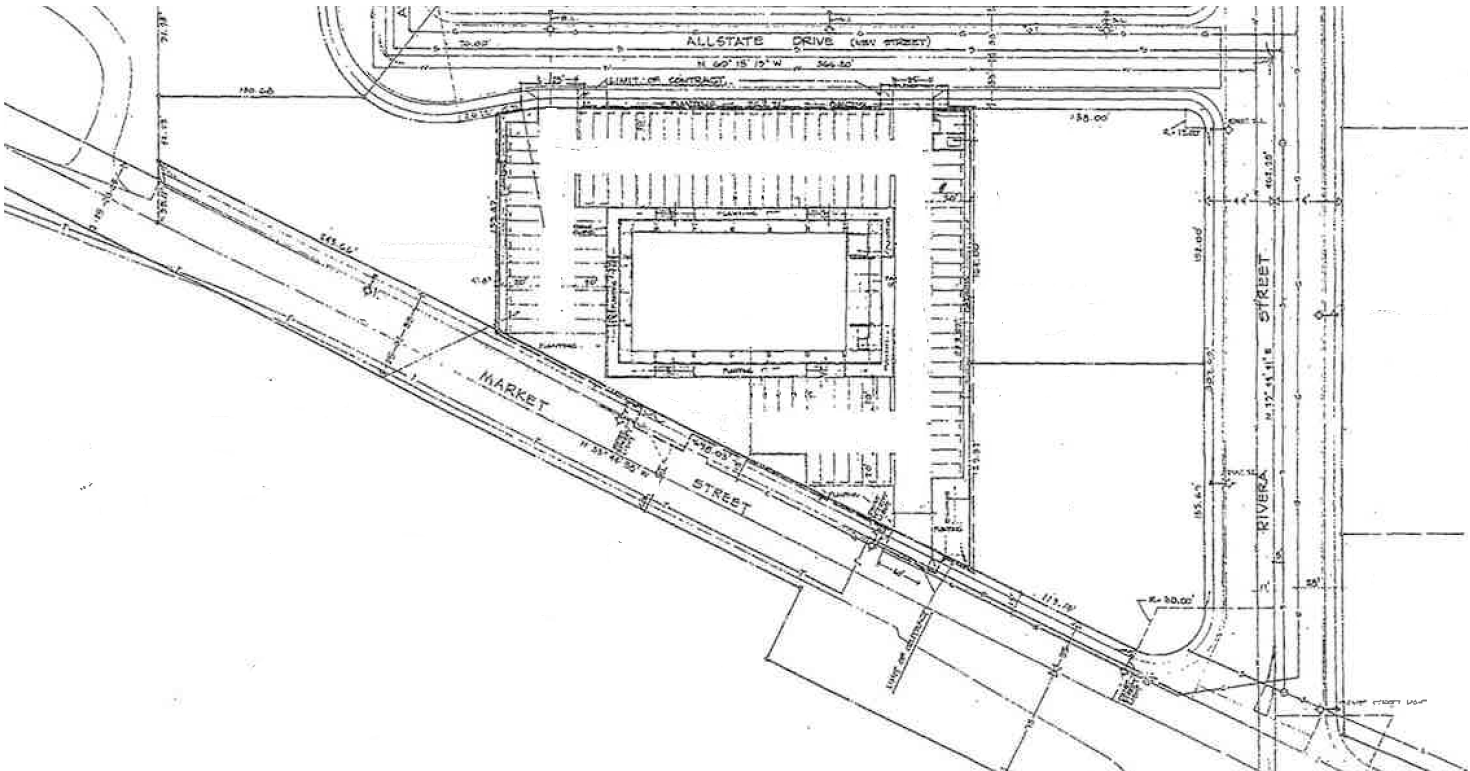
rich.erickson@lee-associates.com
License ID# 01219183

FOR SALE

+10,366 SF

REDWINE & SHERRILL LAW BUILDING

1950 Market Street | Riverside, CA 92501



Lee & Associates, Inc. - Riverside
4193 Flat Rock Drive, Suite 100
Riverside, CA 92505
Corporate ID 01048055

RICH ERICKSON
Senior Vice President
951.276.3637
rich.erickson@lee-associates.com
License ID# 01219183