

## SUBLEASE

### PROPERTY HIGHLIGHTS

Type: Industrial Warehouse Sublease space – Expiring August 12th 2019

Size: 25,600 SF Gross with 1,937 SF of that being build out office space

Price: \$5.25 NNN

Docks: There are 4 which are 8'x8'

Drive-ins: 1 oversized 14'x16'

Clear height: Half of warehouse is 28 ft clear and half is 24 ft clear

Column Spacing: 40'x40'

Rail served with two 8'x8' doors

Climate controlled HVAC Room in the warehouse (1,650 SF)

Racking, fork truck, and stand up truck can be negotiated into the lease

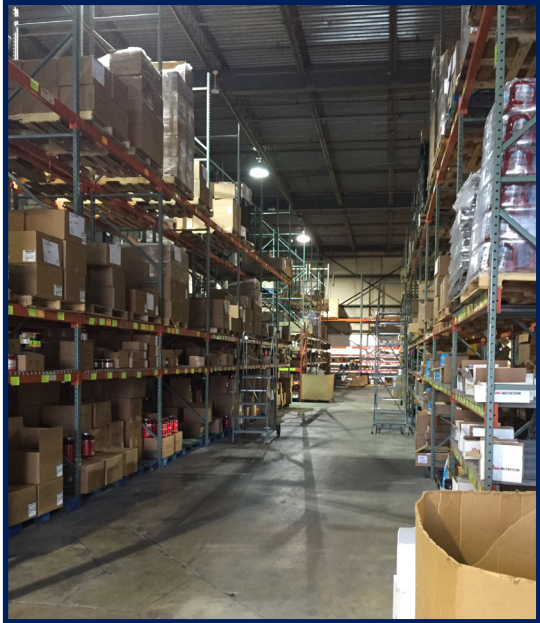
### CONTACT

Steven Schaub, SIOR  
Senior Vice President  
317.210.8807  
steve.schaub@avisonyoung.com

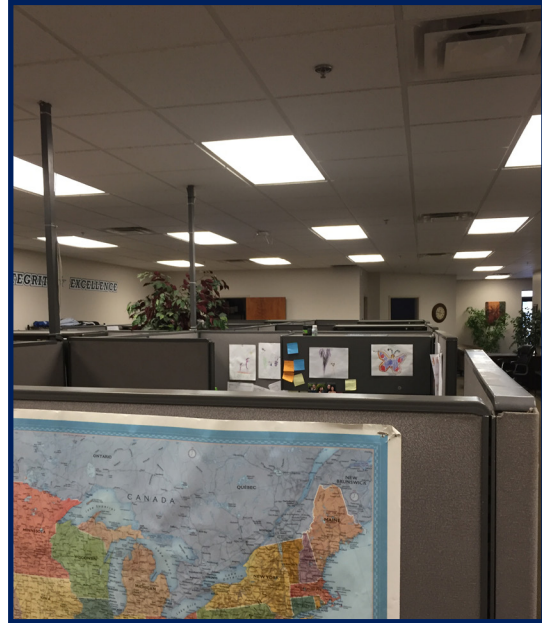
Aaron Hemmick  
Associate  
317.210.8803  
aaron.hemmick@avisonyoung.com

**SITE**





**Interior Storage Space**



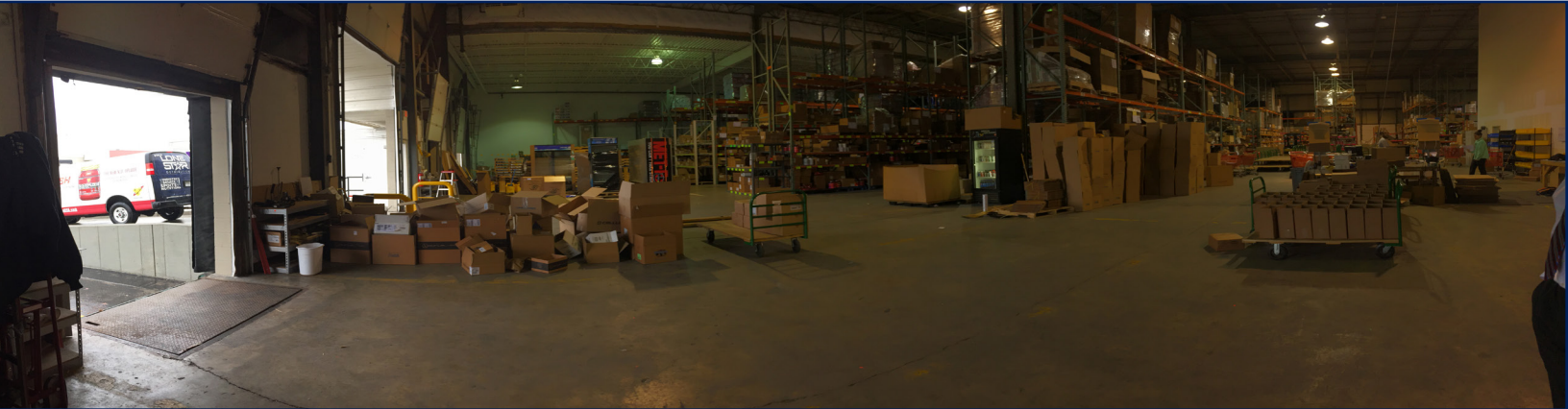
**Interior Office Space**



**Interior View of Doors**



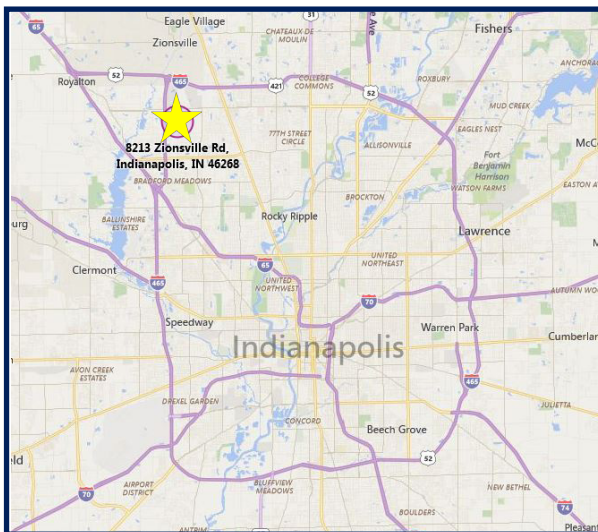
**Interior View of Main Floor**



**Interior Main View**



**Interior Storage Space**



**View of Exterior**

**CONTACT**

Steven Schaub , SIOR  
Senior Vice President  
317.210.8807  
steve.schaub@avisonyoung.com

Aaron Hemmick  
Associate  
317.210.8803  
aaron.hemmick@avisonyoung.com

