

LEASE OFFICE

41 W. OTTERMAN STREET, GREENSBURG, PA 15601



HIGHLIGHTS

- Prime ADA accessible office space located in the heart of Downtown Greensburg's Historic District
 - close proximity to various retail and restaurant establishments
- Parking garage available across the street
- Located along bus line
- Traffic count: 9,500 +/- vehicles per day
- Size of building: 30,000 +/- sq. ft.
 - Space Available: **2nd Floor: 2,500 +/- square feet**

ASKING RATE: \$12 psf + trash & janitorial

DEMOGRAPHICS

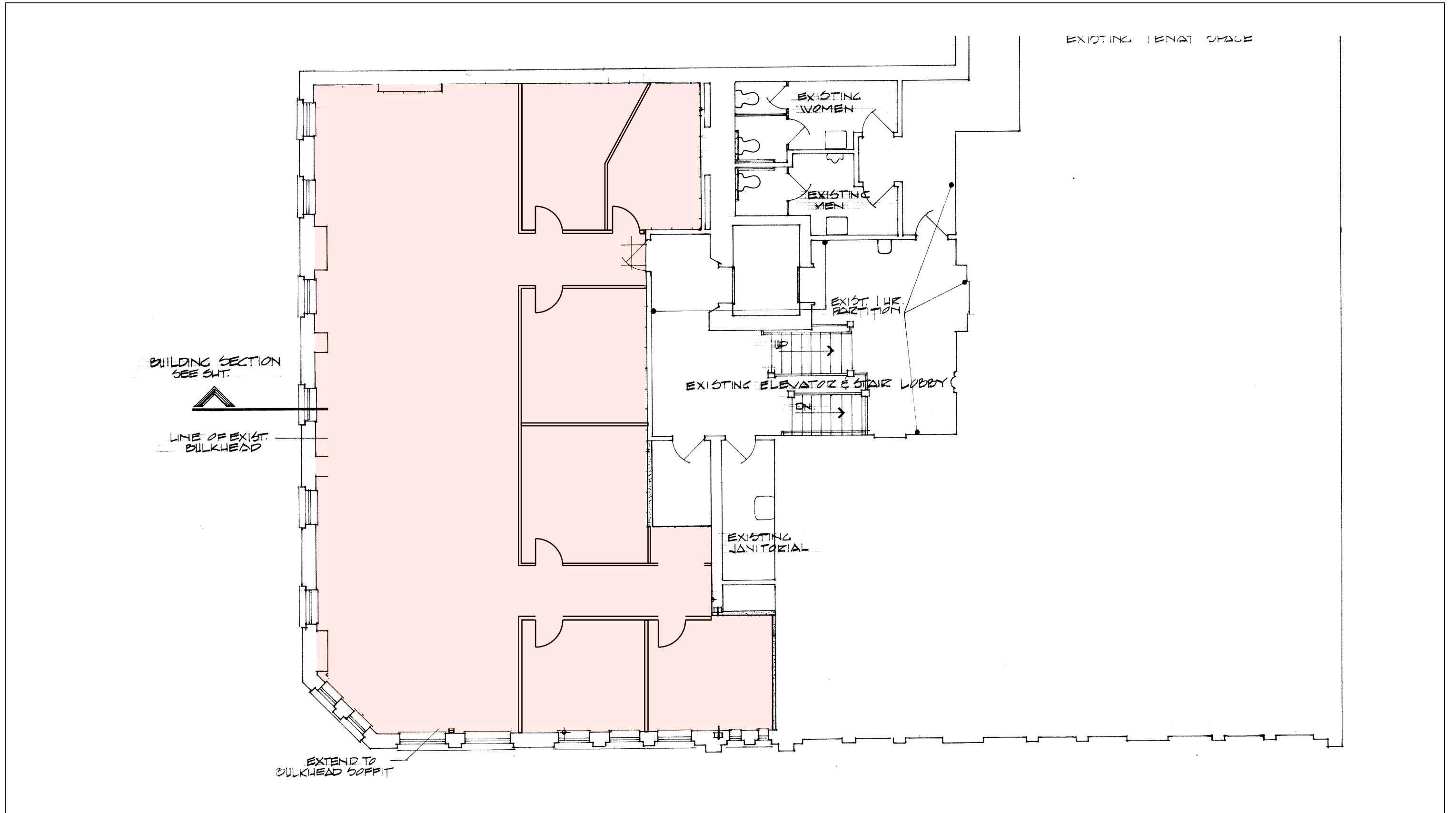
	1 Mile	3 Mile	5 Mile
2018 Population	13,188	45,089	73,290
Med. HH Income	\$39,063	\$54,542	\$55,803

PRC
COMMERCIAL

CONTACT:
Brad Ring
Commercial Brokerage
412.261.6532 x224
brad@prudentialrealty.com

PRC Commercial
3700 South Water Street
Suite 105
Pittsburgh, PA 15203
www.prudentialrealty.com

All information furnished regarding this property for sale, rental, or financing is from sources deemed reliable but no warranty or representation is made as to the accuracy thereof and same is submitted subject to errors, omissions, change of price, rental or other conditions prior to sale, lease, or financing or withdrawal without notice. PRC Commercial will make no representation and assume no obligation regarding the presence or absence of toxic or hazardous waste or substances or other undesirable material on or about the property which will ultimately be leased or purchased.



App. 2,500 useable square feet
 * Dimensions are not 100% accurate

41 W. Otterman Street

Greensburg, PA 15601

