



# BEVERLY HILLS/WEST HOLLYWOOD BUILDING FOR LEASE

MEDICAL

RETAIL

OFFICE

416 S ROBERTSON BOULEVARD | LOS ANGELES, CA 90048

# PROPERTY FACTS

**\$6.50 - \$7.00/SF NNN**  
(NNN=\$1.25/SF)  
ASKING RATE

**±6,110 SF**  
BUILDING SIZE

## PROPERTY HIGHLIGHTS

- 3 blocks from Cedar Sinai Medical Center
- Prime location on a high traffic street
- Walking distance to popular restaurant/retail amenities

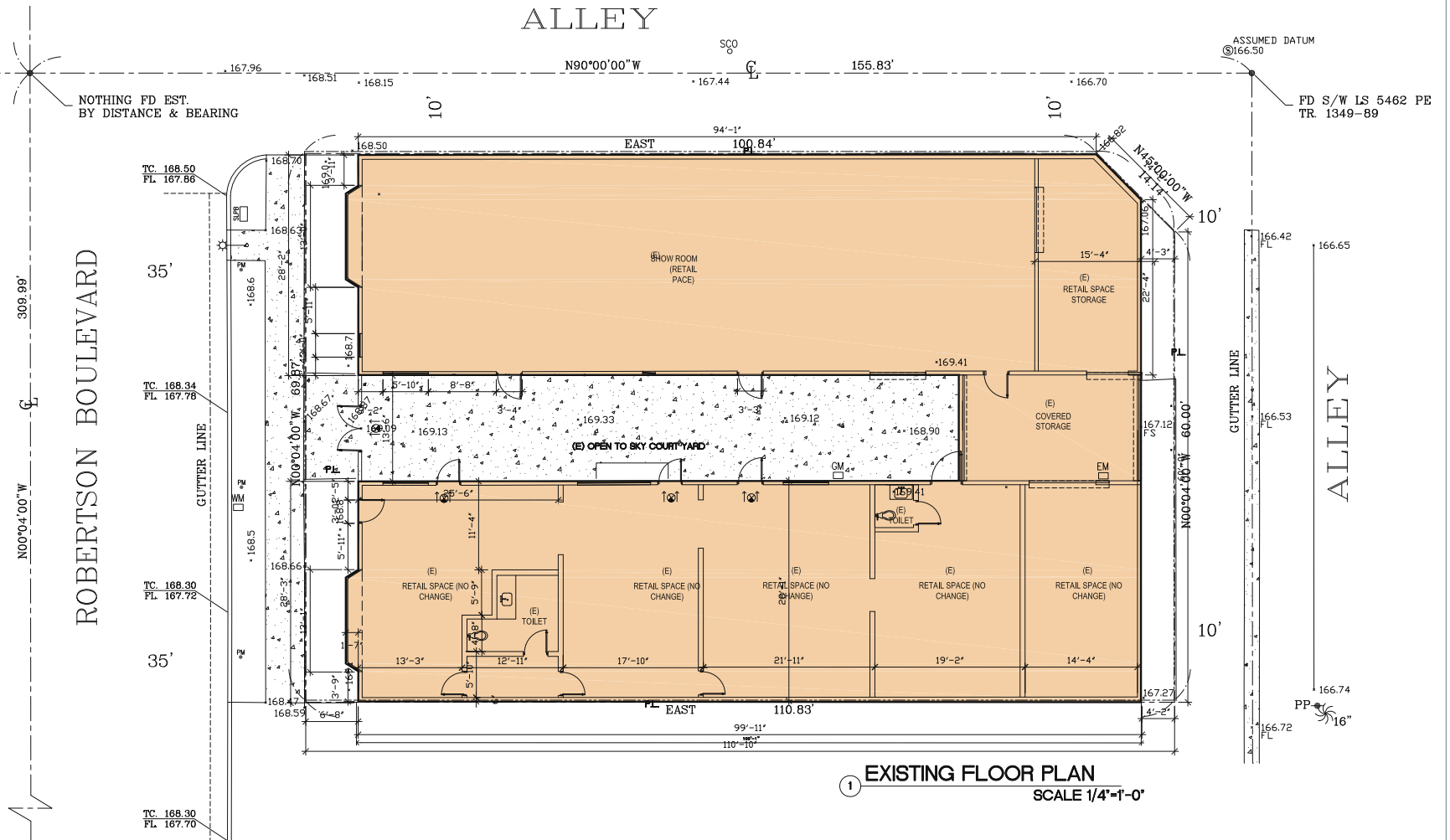
**5 to 10 Years**  
TERM

**Immediately**  
AVAILABILITY

**Available**  
TENANT IMPROVEMENTS

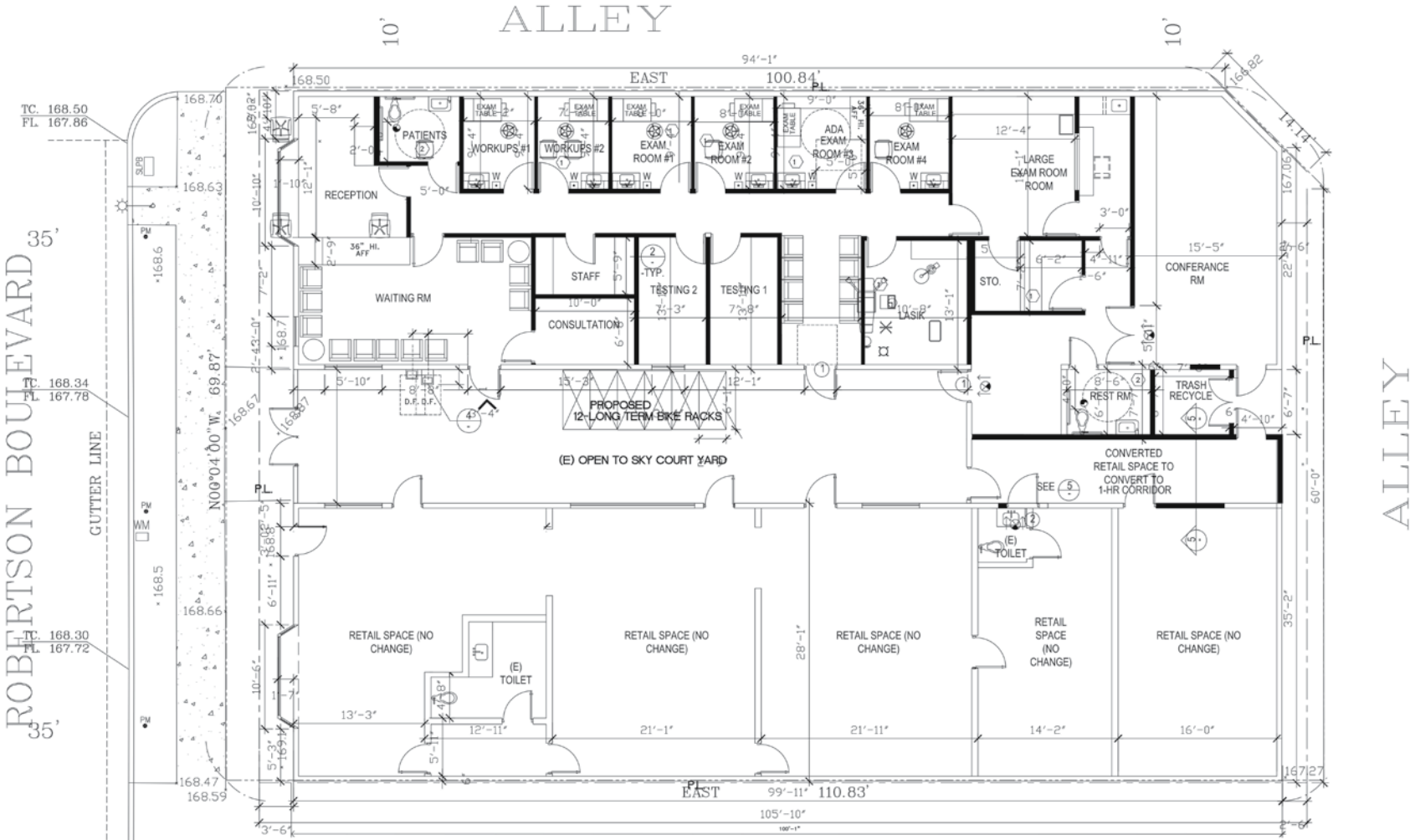


# FLOORPLAN



FD SPK PER  
FB.18201 PG.13  
(COLGATE AVE.)

# HYPOTHETICAL MEDICAL FLOORPLAN



SCALE 3/16"=1'-0"

# AERIAL VIEW



# AMENITIES MAP



# SELECTED AMENITIES



THE BAZAAR BY JOSÉ ANDRÉS



GEORGETOWN CUPCAKE



FOUR SEASONS HOTEL



MATSUHISA



THE IVY



LE PAIN QUOTIDIEN



THE GROVE



SLS HOTEL, BEVERLY HILLS

# BEVERLY HILLS/WEST HOLLYWOOD BUILDING FOR LEASE

MEDICAL

RETAIL

OFFICE

416 S ROBERTSON BOULEVARD LOS ANGELES, CA 90048

Available  
Daniel Chiprut / Steven Salas,  
Brihney Kagawa  
310.407.6581

EXCLUSIVELY PRESENTED BY:

**DANIEL CHIPRUT**

Executive Vice President  
Commercial Asset Group

M 310.800.7955  
daniel@cag-re.com  
CA RE Lic. #01808709

**STEVE SALAS**

Senior Managing Director  
Newmark Knight Frank

T 310.407.6569  
M 310.508.0660  
steven.salas@ngkf.com  
CA RE Lic. #01232955

**KELLY REINKER**

Operations Manager, LA Region  
Newmark Knight Frank

T 213.596.2239  
M 858.349.0513  
kelly.reinker@ngkf.com  
CA RE Lic. #01963632