

FOR LEASE

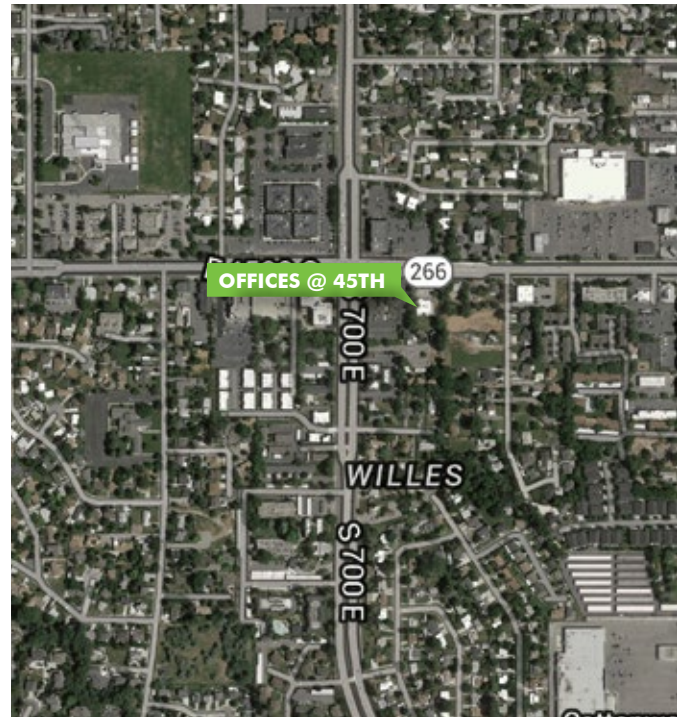
OFFICES @ 45TH

716 EAST 4500 SOUTH
MURRAY, UTAH 84107



BUILDING FEATURES

- + Available Spaces:
 - South Garden Level: 3,138 RSF
 - South Main Floor: 5,173 RSF
 - North Main Floor: 1,905 RSF
- + \$14.50-\$17.50/SF, Full Service
- + Parking: 4/1000
- + Great Cental Valley location
- + Easy access to I-15



www.cbre.com/slc

CBRE

FOR LEASE OFFICES @ 45TH

716 EAST 4500 SOUTH
MURRAY, UTAH 84107



AVAILABLE SPACE

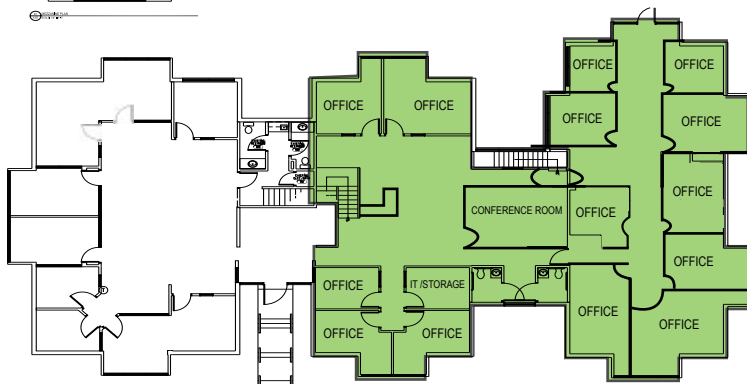
SOUTH BUILDING

GARDEN LEVEL :: 3,138 RSF



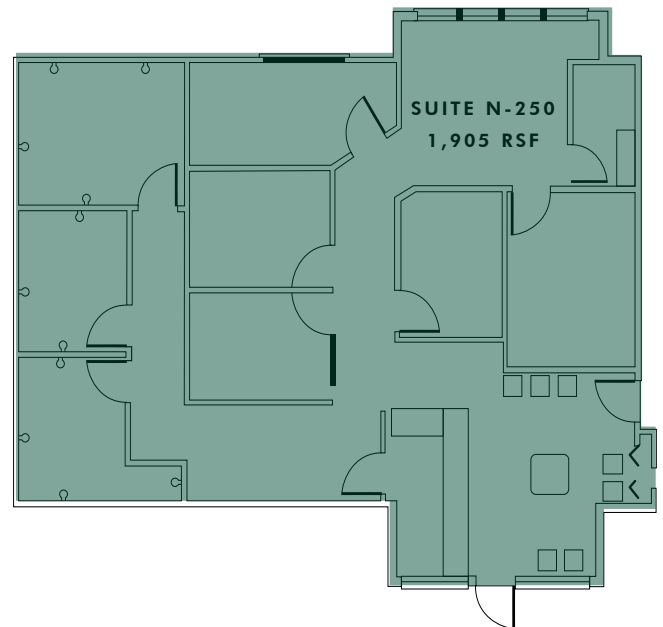
SOUTH BUILDING

MAIN LEVEL :: 5,173 RSF



NORTH BUILDING

MAIN LEVEL :: 1,905 RSF



CONTACT

LAURIE ADAIR

Vice President
+1 801 869 8009
laurie.adair@cbre.com

KREG PETERSON

First Vice President
+1 801 869 8092
kreg.peterson@cbre.com

© 2019 CBRE, Inc. This information has been obtained from sources believed reliable. We have not verified it and make no guarantee, warranty or representation about it. Any projections, opinions, assumptions or estimates used are for example only and do not represent the current or future performance of the property. You and your advisors should conduct a careful, independent investigation of the property to determine to your satisfaction the suitability of the property for your needs. Photos herein are the property of their respective owners and use of these images without the express written consent of the owner is prohibited.

www.cbre.com/slc

CBRE