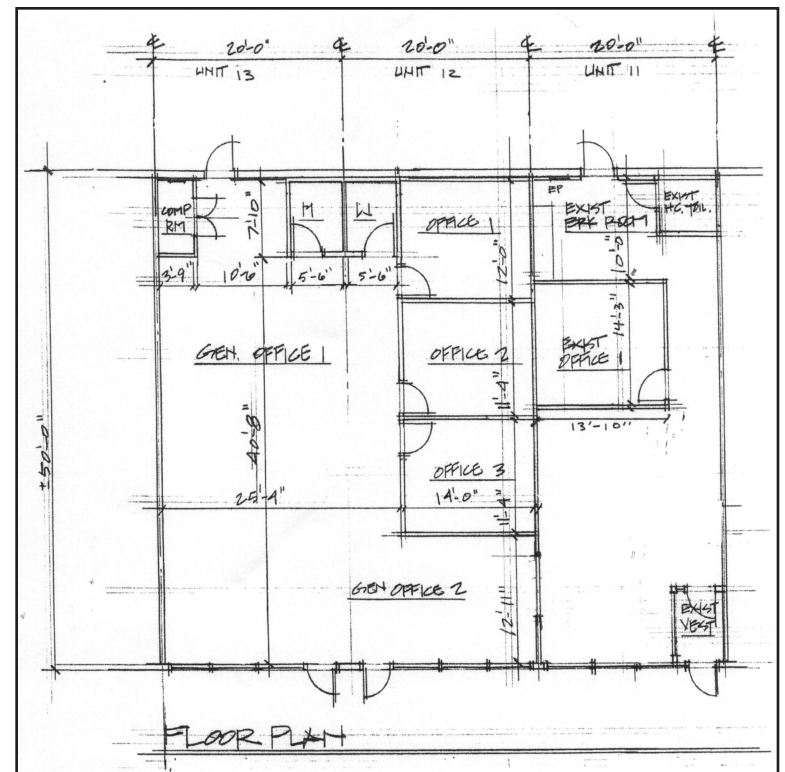
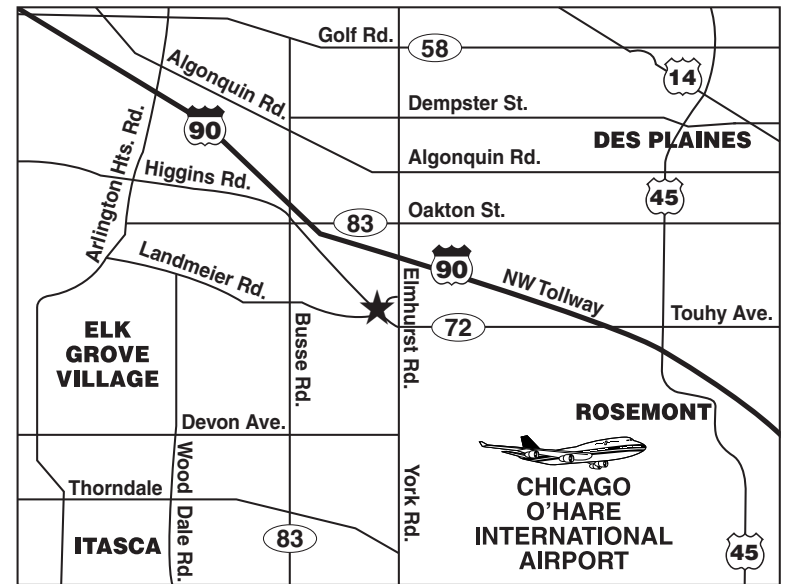
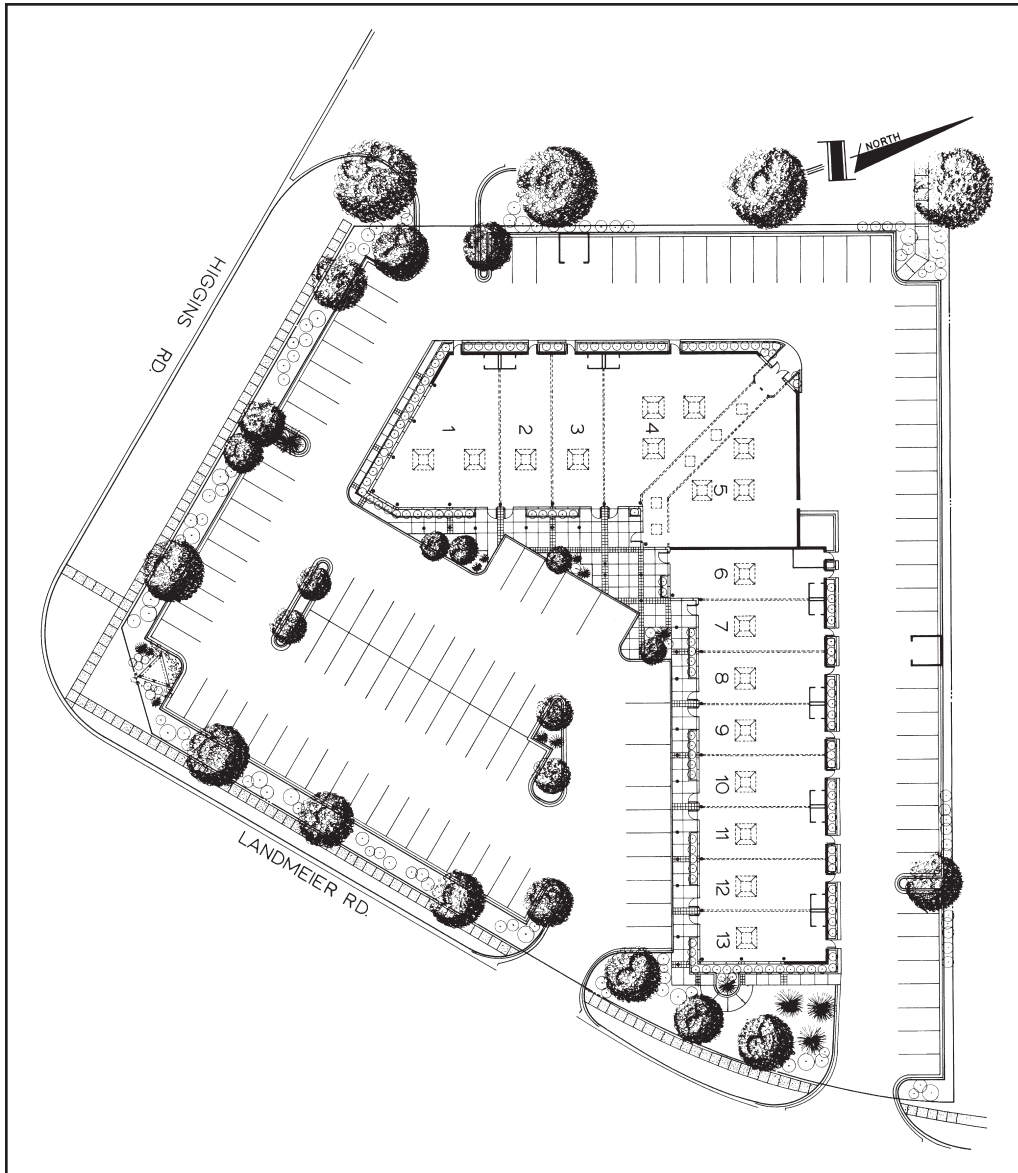




- Location: 2428-2432 Landmeier Road
Elk Grove Village, IL
- Building Size: 18,090 Sq. Ft. +/-
- Land Site: 1.85 Acres +/-
- Parking: 130 Stalls
- Available: 1,000 - 3,000 Sq. Ft.
- Suites: 11 thru 13
- Net Lease Rate: Negotiable
- R.E. Taxes: \$3.40 Per Sq. Ft.
- CAM: \$2.42 Per Sq. Ft.
- Annual Escalation: Negotiable
- Term: Negotiable



George Gullo Development Corporation

2050 East Higgins Road

Elk Grove Village, IL 60007

Tel: (847) 439-4400

Fax: (847) 439-1465

For Details Contact: Mario Gullo Ext. 227 mgullo@georgegullo.com

All information herein is from sources deemed reliable but not guaranteed accurate, subject to errors, omissions, and to change of price and term, prior to sale or lease, all without notice.