



**CUSHMAN &
WAKEFIELD**

FOR LEASE

7802 South State Street

Midvale, Utah 84047



Top Floor of Midvalley Plaza

Property Highlights

- 1,200 SF
- Amazing access from TRAX
- Three offices, break area, and reception area
- \$14.00 SF, full service less: electricity, gas, and janitorial
- At intersection of 7800 South and State Street
- 3 offices, breakroom, and reception area
- Top floor
- Good parking

Tanner Riedel

Associate

+1 801 303 5543

tanner.riedel@cushwake.com

170 South Main Street, Suite 1600

Salt Lake City, UT 84101

Main +1 801 322 2000

Fax +1 801 322 2040

cushmanwakefield.com

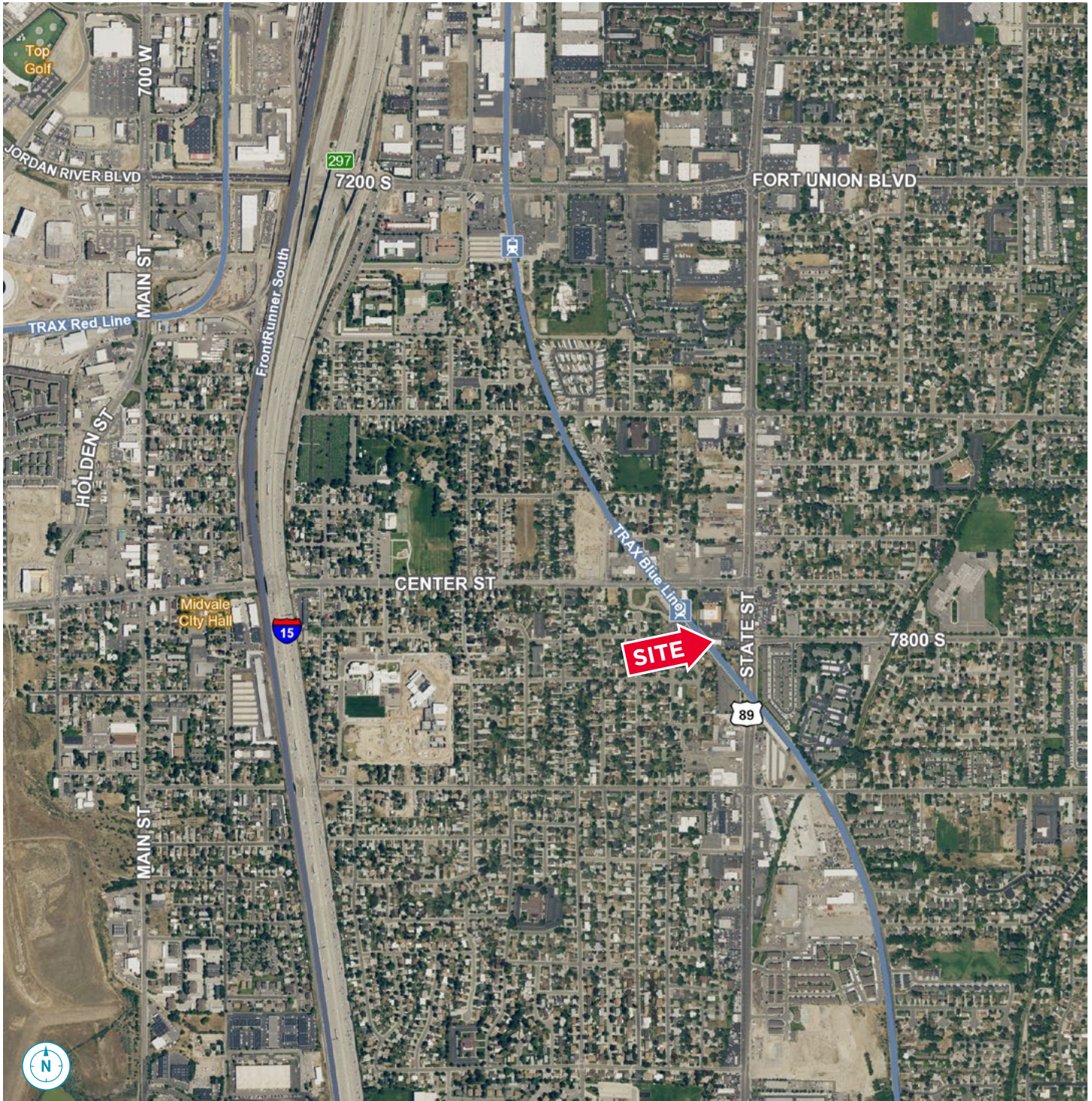


**CUSHMAN &
WAKEFIELD**

FOR LEASE

7802 South State Street

Midvale, Utah 84047



Tanner Riedel

Associate

+1 801 303 5543

tanner.riedel@cushwake.com

170 South Main Street, Suite 1600

Salt Lake City, UT 84101

Main +1 801 322 2000

Fax +1 801 322 2040

cushmanwakefield.com