

Mercer County | New Jersey **PENNINGTON AVENUE SHOPPING VILLAGE** 359 Pennington Avenue | Trenton



End-Cap with Potential Drive-Thru

PROPERTY HIGHLIGHTS

- Available for lease: 1,200, 2,400, 3,800, 4,000 and 7,800 SF
- Strong community center anchored by Superfood Market
- Densely populated area with 146,990 people within three miles
- Strong daytime population, adjacent to Downtown Trenton
- Easy access location on Pennington Avenue (Rt. 31 / 11,000 VPD), excellent visibility & off-street parking
- Join Superfood Market, Metro PCS, Liberty Tax, beauty supply, LA Nails, laundromat, Mr.China Restaurant & Cha's Seafood
- Ideal location for pharmacy, liquor store, furniture store, restaurants/food, medical offices and many other uses



DEMOGRAPHICS (*)

	1 Mile	2 Miles	3 Miles
Population	26,972	78,158	146,990
Average HH Income	\$46,095	\$63,234	\$71,183
Total Businesses	1,266	3,844	5,685
Number of Employees	26,910	68,823	92,906

*Data Source: AGS™

CONTACT:

David DePetris
 ddepetris@lpre.com
610-941-4034 Ext 107

Leon Eldridge
 leldridge@lpre.com
856-231-1010 Ext. 204

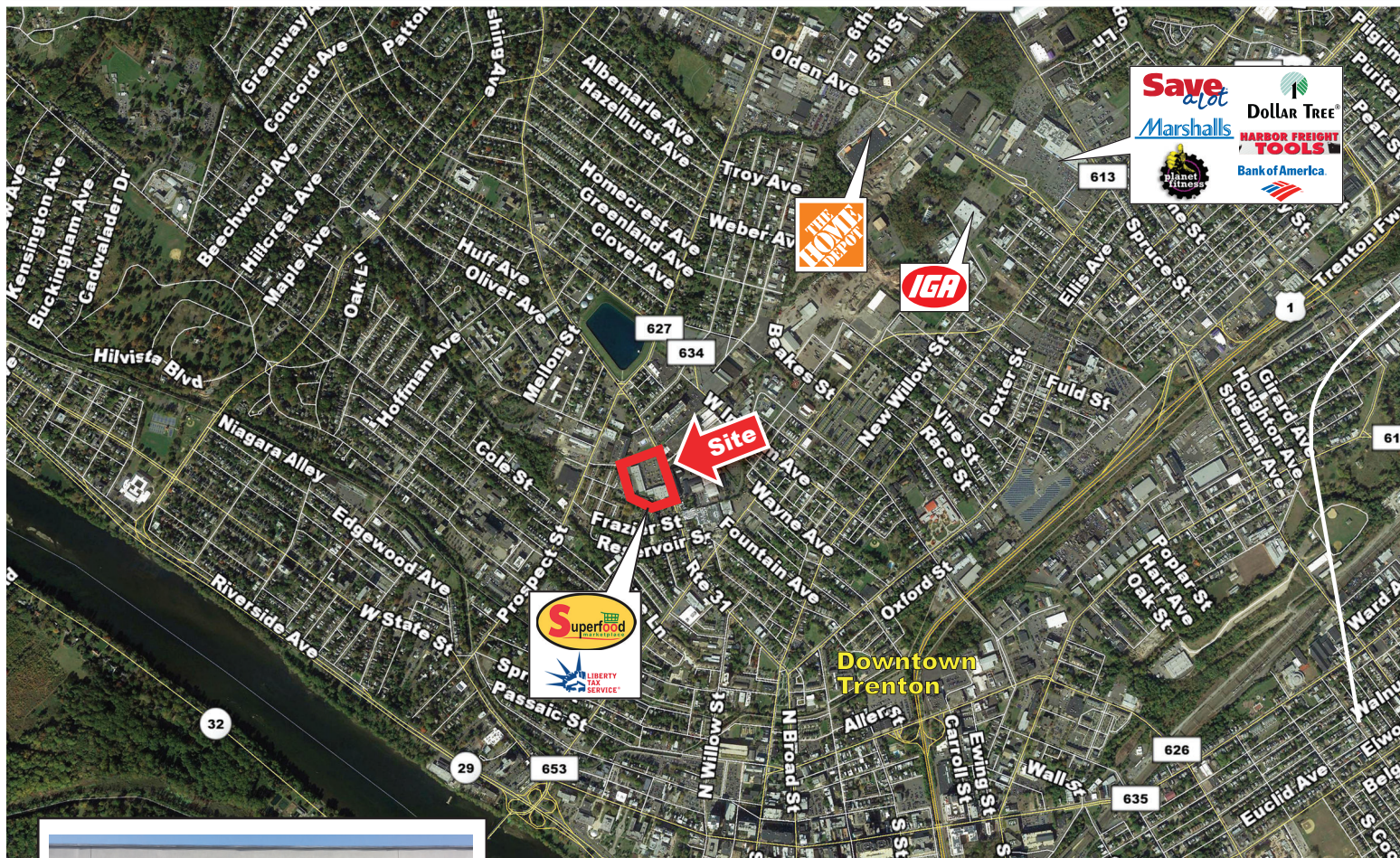
T: 610-941-4034 | F: 610-941-4038 | LPRE.COM
 1000 Fayette Street | Conshohocken, Pennsylvania 19428



Mercer County | New Jersey

PENNINGTON AVENUE SHOPPING VILLAGE

359 Pennington Avenue | Trenton



CONTACT:

David DePetris
 ddepetris@lpre.com
 610-941-4034 EXT 107

Leon Eldridge
 leldridge@lpre.com
 856-231-1010 Ext 204

