

ETHAN EXPO

4,029 SF - 12,489 SF OFFICE SUITES FOR LEASE



1440 ETHAN WAY SACRAMENTO, CA

FEATURES:

- Adjacent to the expanding Howe 'bout Arden retail development with a Starbucks, Century 14 theater, Applebee's, Chili's, Home Goods, MOD Pizza, the Container Store, Nordstrom Rack and more
- 19,000 cars per day pass by on Ethan Way
- Building and monument signage available
- Private entrances and in-suite restrooms
- Low 7% load factor

COMMENTS:

Ethan Expo is an architecturally attractive three building Office/Retail project on Ethan Way and Hallmark Dr just south of Arden Way. A perfect candidate for Office or Retail tenants looking for great access and street exposure.

LEASE RATES:

\$1.49 - \$1.59 PSF/MO FSG

FOR MORE INFORMATION CONTACT:

Grant Keeney

916-779-1000

grant@ethanconradprop.com

Lic: 00891996

Ethan Conrad

916-779-1000

ethan@ethanconradprop.com

Lic: 01298662

ETHAN CONRAD
PROPERTIES INC.

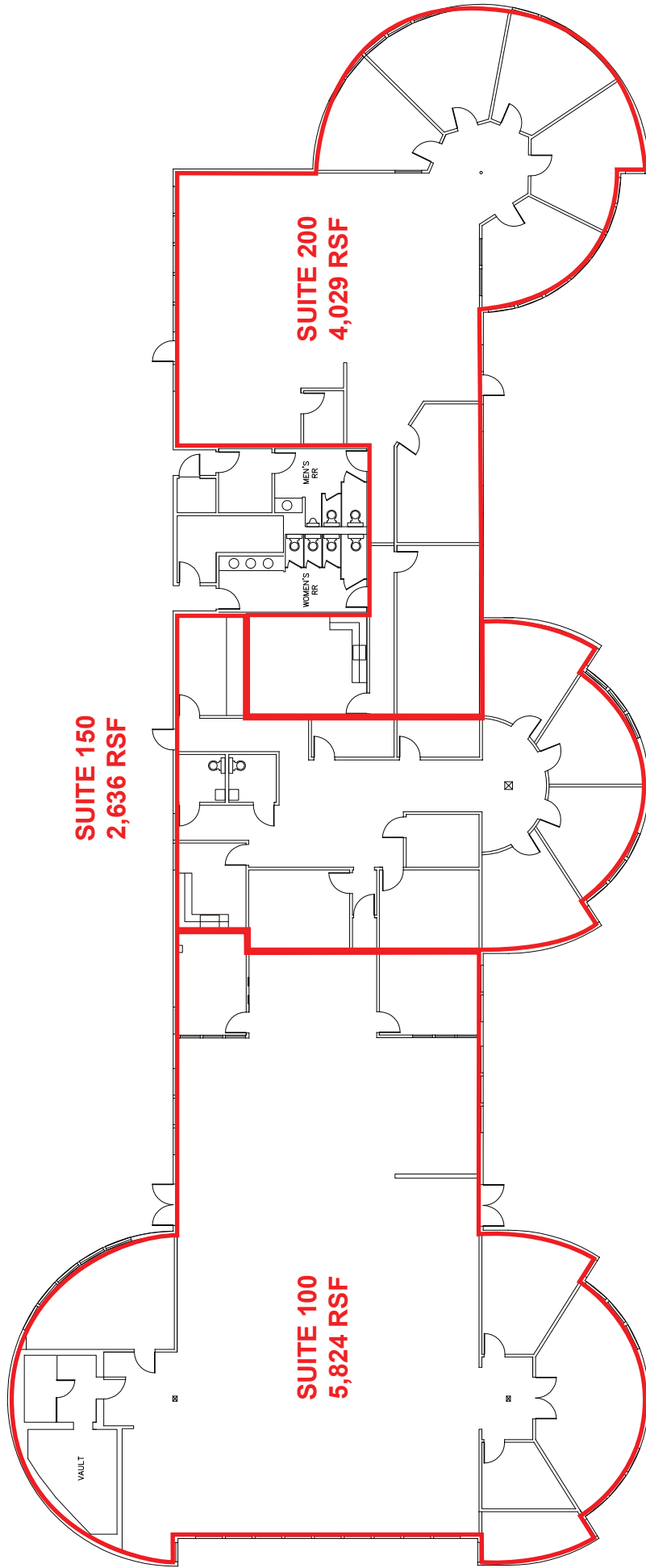


The information contained herein has been obtained from sources we believe to be reliable. However, we cannot guarantee, warrant or represent its accuracy and all information is subject to error, change or withdrawal. An interested party and their advisors should conduct an independent investigation of the property to determine to your satisfaction the suitability of the property for your needs.

1440 ETHAN WAY, SACRAMENTO CA

Suite	RSF	Lease Rate	Rent
100-200	12,489	\$1.49 FSG	\$18,609.00

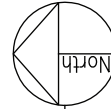
Divisible to 4,029 RSF @ \$1.59 PSF.



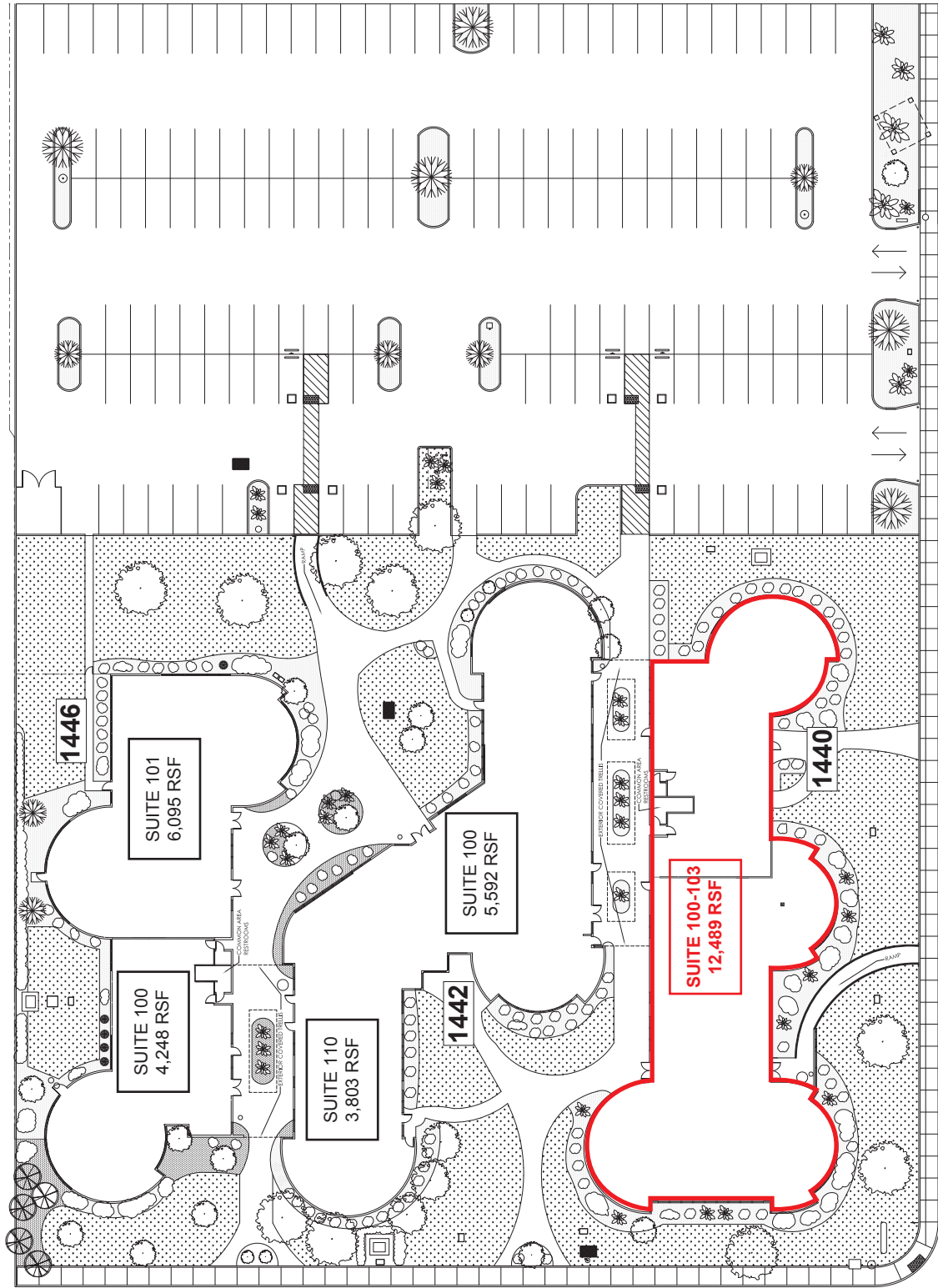
ETHAN CONRAD PROPERTIES
1440 ETHAN WAY
SACRAMENTO, CA

11/03/2017

SCALE: 1/16"=1'-0"

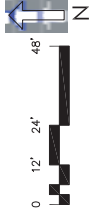


1440 - 1446 ETHAN WAY, SACRAMENTO CA



← ETHAN WAY →

← HALLMARK DRIVE →



1440 - 1446 ETHAN WAY, SACRAMENTO CA



The information contained herein has been obtained from sources we believe to be reliable. However, we cannot guarantee, warrant or represent its accuracy and all information is subject to error, change or withdrawal. An interested party and their advisors should conduct an independent investigation of the property to determine to your satisfaction the suitability of the property for your needs.