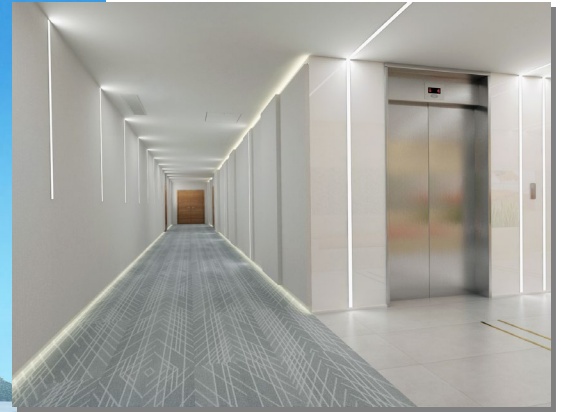


88,000 SF MEDICAL BUILDING

1260 15TH ST, SANTA MONICA, CA 90404



AVAILABLE SPACE:

88,000 SF Medical Building
Suite 400 - 986 SF
Penthouse - 1,300 SF

ASKING RENT: \$5.50 - \$5.75 PSF, FSG FOR SUITE 400
\$6.25 PSF, FSG FOR PENTHOUSE

PROPERTY HIGHLIGHTS:

- Brand new renovation, beginning now, on the inside of the building - new common areas and bathroom.
- The outside will be completely re-skinned.
- Across from UCLA Medical Center



For further information, please contact exclusive agent:

JIM BURNAP

LIC #01020515

jburnap@beitler.com

310.447.7236

BEITLER

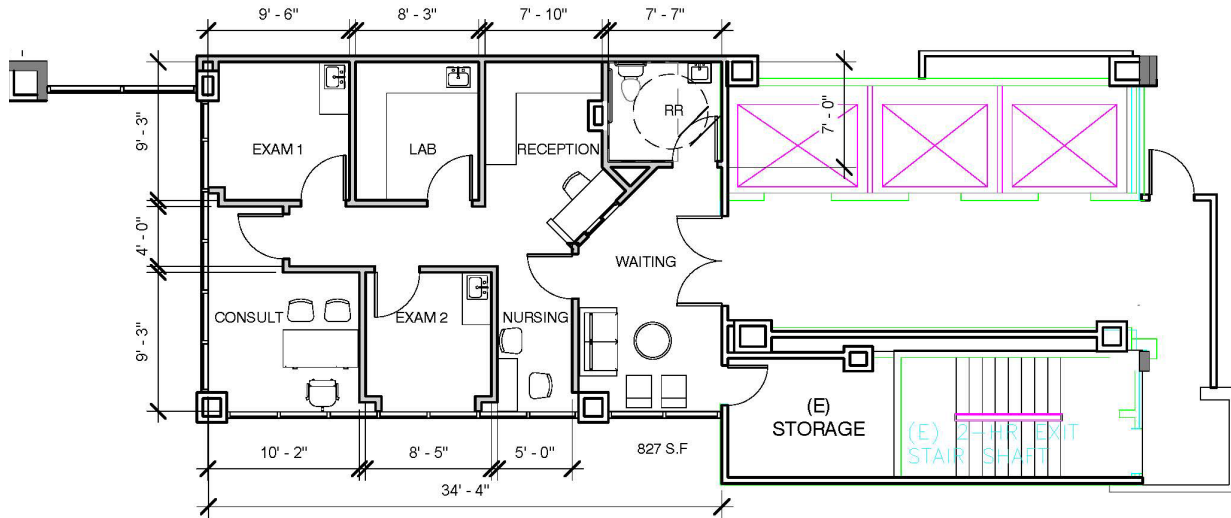
LIC. # 00808850 ▪ 825 S. Barrington Avenue ▪ Los Angeles, CA 90049 ▪ ph 310.820.2955 ▪ fx 310.820.7224

The information above has been obtained from sources deemed reliable. While we do not doubt its accuracy, we have not verified it and make no guarantee, warranty or representation about it. It is your responsibility to independently confirm its accuracy and completeness. Any projections, opinions, assumptions or estimates used are for illustration only and do not represent the current or future performance of the property. You and your advisors should conduct a thorough, independent investigation of the property to determine to your satisfaction the suitability of the property for your needs.

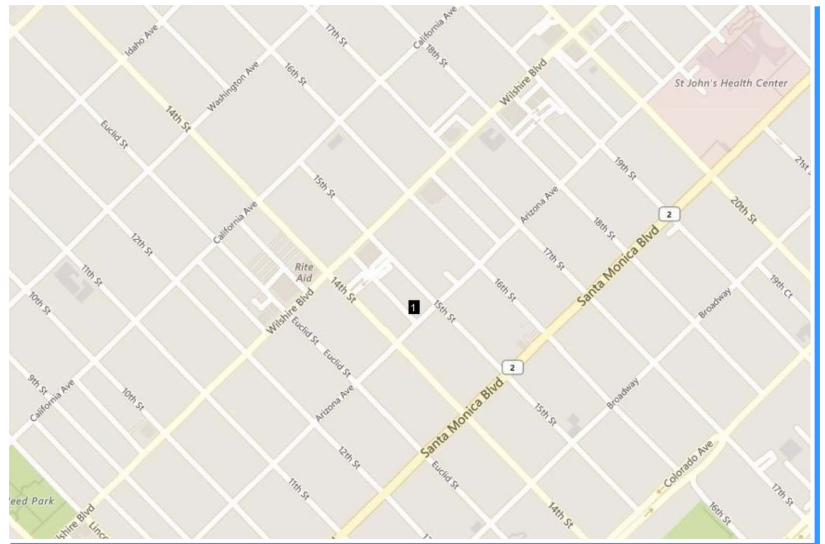
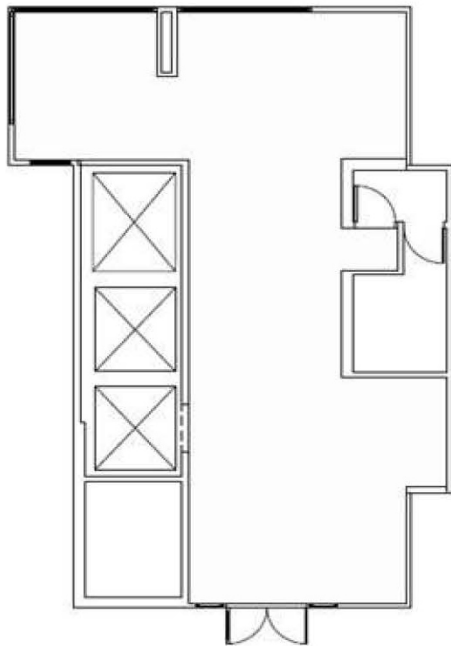
TCN
WORLDWIDE

1260 15th STREET, SANTA MONICA, CA 90404

**SUITE 400
AVAILABLE 986 SF**



**READY FOR BUILD-OUT
PENTHOUSE ±1,300 SF**



JIM BURNAP

310.447.7236



LIC. # 00808850 • 825 S. Barrington Avenue • Los Angeles, CA 90049 • ph 310.820.2955 • fx 310.820.7224

The information above has been obtained from sources deemed reliable. While we do not doubt its accuracy, we have not verified it and make no guarantee, warranty or representation about it. It is your responsibility to independently confirm its accuracy and completeness. Any projections, opinions, assumptions or estimates used are for illustration only and do not represent the current or future performance of the property. You and your advisors should conduct a thorough, independent investigation of the property to determine to your satisfaction the suitability of the property for your needs.

