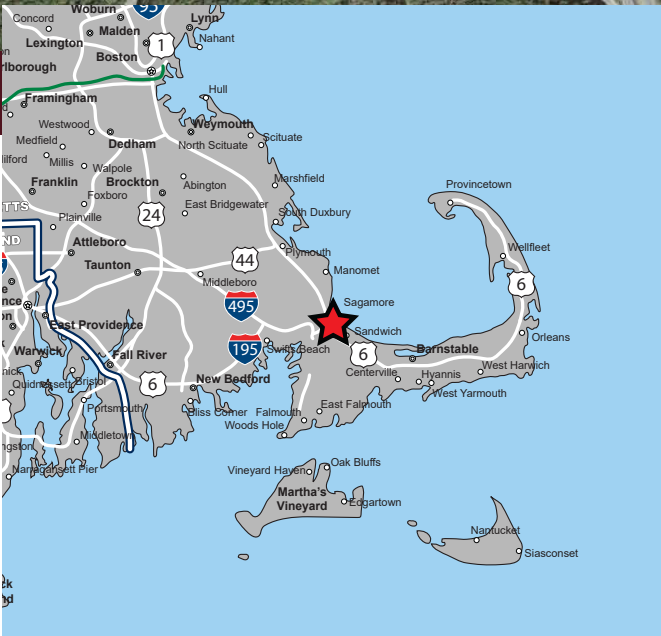
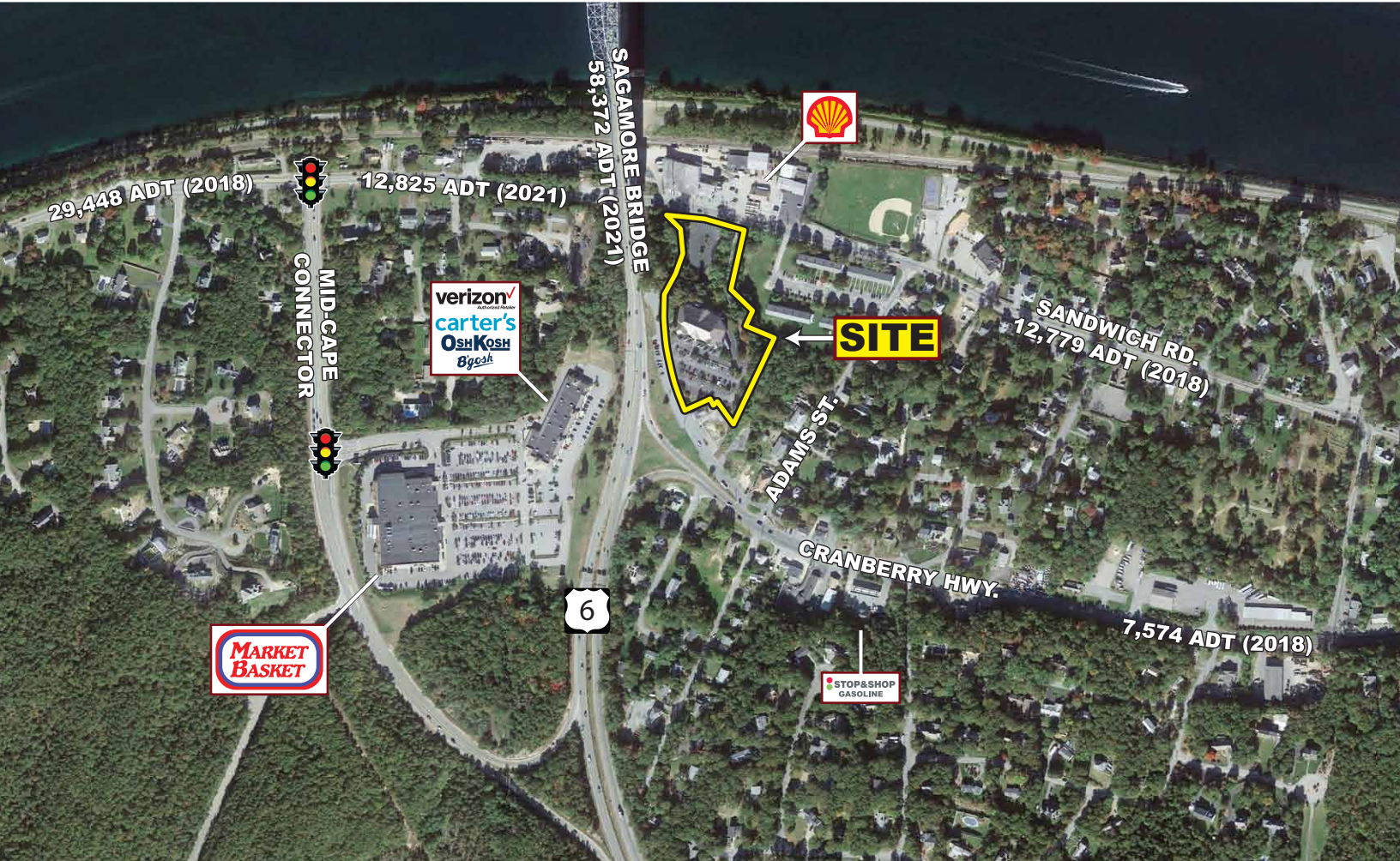


FORMER CHRISTMAS TREE SHOPS

5 Cranberry Highway, Sagamore/Bourne, Massachusetts



AVAILABLE FOR LEASE

PROPERTY HIGHLIGHTS

- » 22,522 SF Available
- » 4.205 Acre Site
- » Pylon Signage
- » Unique Signature Location
- » High Traffic Count
- » Tremendous Visibility and Access
- » Ideal for Brewery, Entertainment, Retail
- » Post and Beam Design and Open Ceiling
- » Available Now



FORMER CHRISTMAS TREE SHOPS

5 Cranberry Highway, Sagamore/Bourne, Massachusetts



EASTERN
RETAIL PROPERTIES

22,522 SF

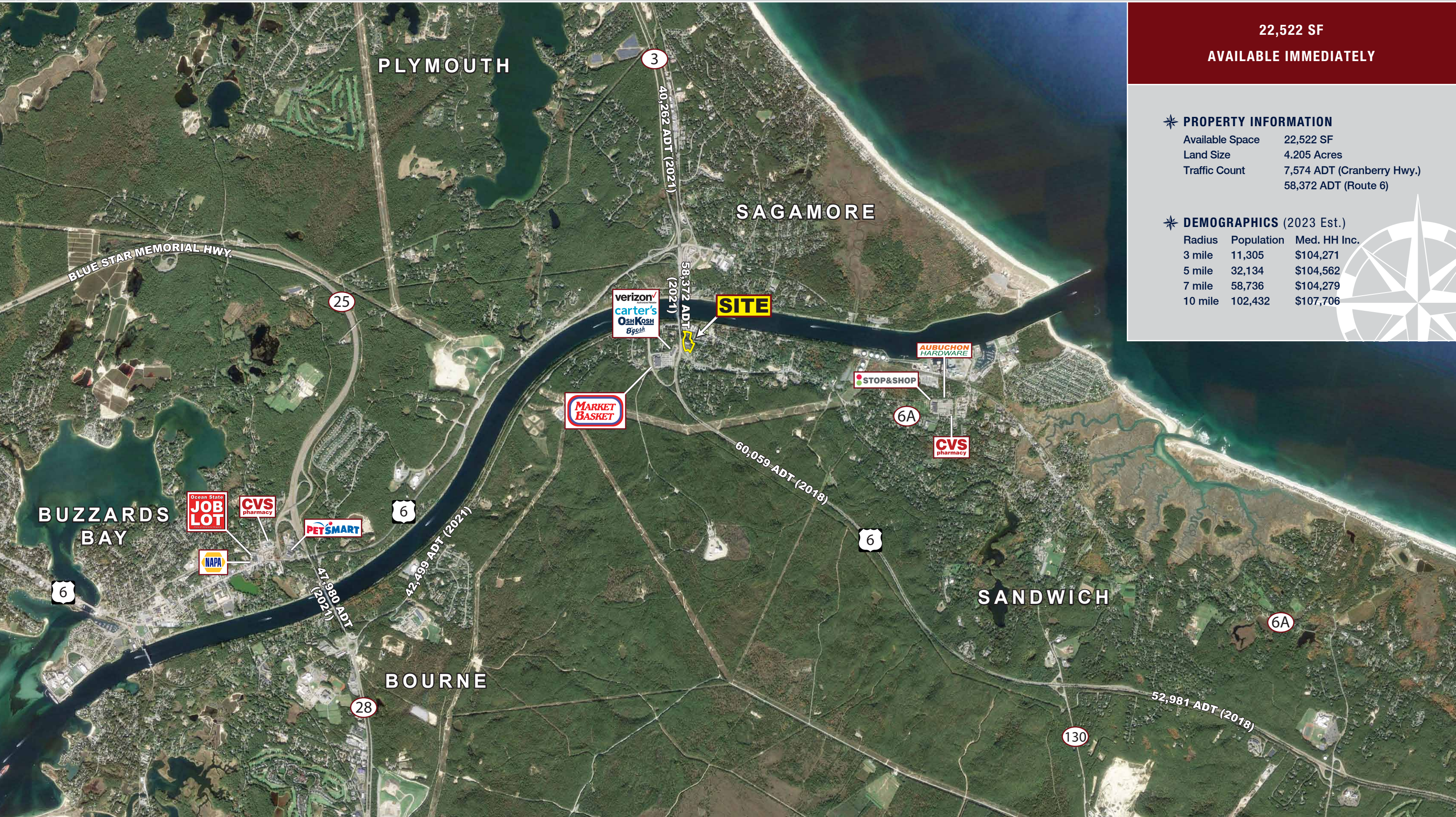
AVAILABLE IMMEDIATELY

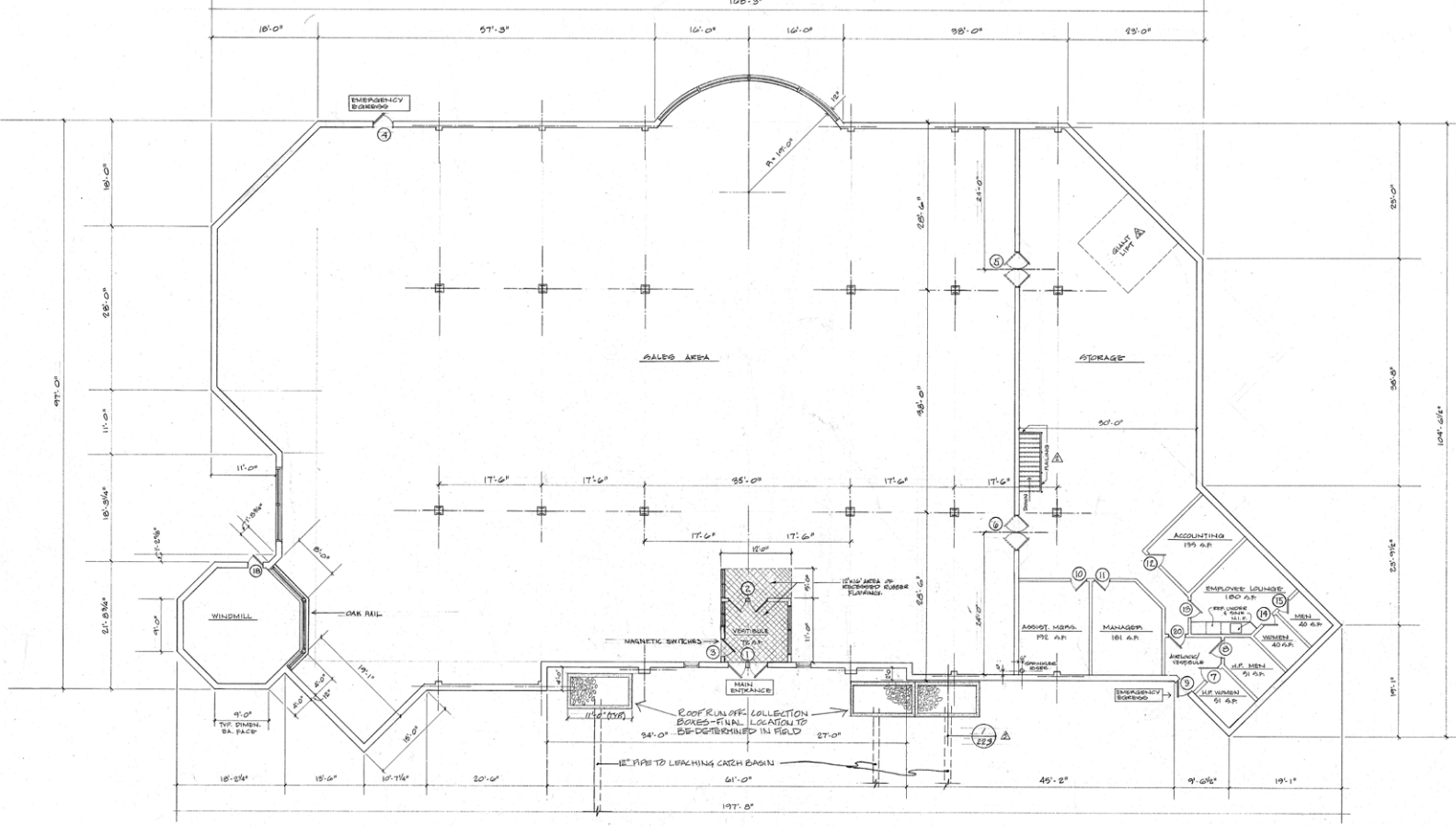
* PROPERTY INFORMATION

Available Space	22,522 SF
Land Size	4.205 Acres
Traffic Count	7,574 ADT (Cranberry Hwy.) 58,372 ADT (Route 6)

* DEMOGRAPHICS (2023 Est.)

Radius	Population	Med. HH Inc.
3 mile	11,305	\$104,271
5 mile	32,134	\$104,562
7 mile	58,736	\$104,279
10 mile	102,432	\$107,706





Former Christmas Tree Shops - 5 Cranberry Highway, Sagamore/Bourne, MA



FOR MORE INFORMATION CONTACT:

Vin Albanese

781.849.9013 (Office) + 617.413.1193 (Cell)

valbanese@easternretail.com

P 781.849.9010 + F 781.849.9050 + www.easternretail.com + 25 Braintree Hill Office Park, Suite 305 + Braintree, MA 02184

The information above has been obtained from sources believed reliable. While we do not doubt its accuracy, we have not verified it and make no guarantee, warranty or representation about it. It is your responsibility to independently confirm its accuracy and completeness. Any projections, opinions, assumptions or estimates used are for example only and do not represent the current or future performance of the property. The value of this transaction to you depends on tax and other factors, which should be evaluated by your tax and financial advisors. You and your advisors should conduct a careful, independent investigation of the property to determine to your satisfaction, the suitability of the property for your needs.