

# OWNER/USER OPPORTUNITY

OFFICE FOR SALE | EDINA, MN

6500  
Barrie  
Road



## LEASING AGENTS

**STEVE SHEPHERD** SIOR  
612.430.9973  
steve.shepherd@ngkf.com

**MATT ELDER** CCIM  
612.430.9974  
matt.elder@ngkf.com





**6500**  
Barrie  
Road



Great Edina location



Easy access to Highway 62, Highway 100 and I-494



Close proximity to Southdale Center and Galleria



Minutes to MSP Airport

**FLOORS**

3

**BUILDING SIZE**

15,304 SF

**LAND SIZE**

.7 AC

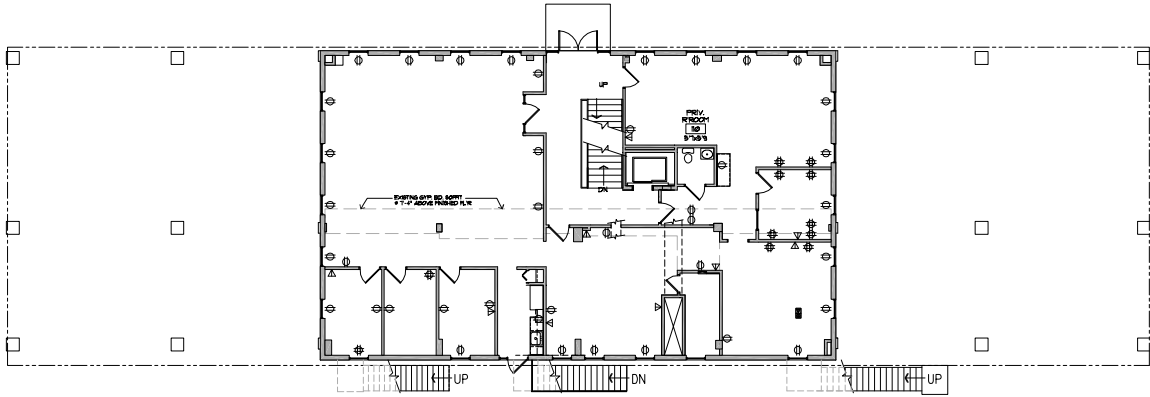
# THE CENTER OF IT ALL

6500 Barrie Road is situated just minutes from Southdale Center and The Galleria - the hot spot for dining, shopping and entertainment in Edina.

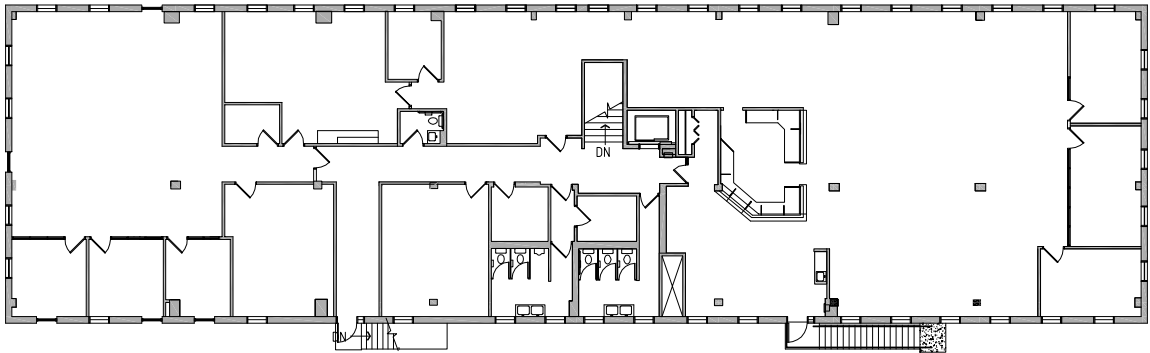


# FLOOR PLANS

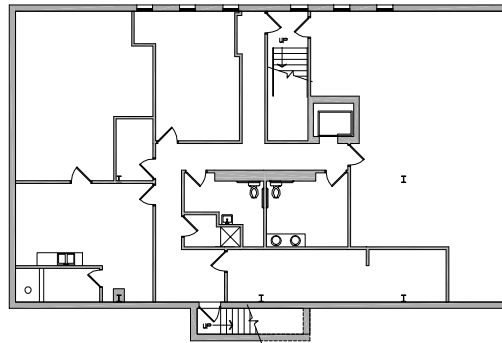
1st Floor | 3,588 SF



2nd Floor | 8,289 SF



Ground Floor | 3,427 SF



FOR INFORMATION, PLEASE CONTACT:

**STEVE SHEPHERD SIOR**  
612.430.9973  
steve.shepherd@ngkf.com

**MATT ELDER CCIM**  
612.430.9974  
matt.elder@ngkf.com



100 South 5th Street #2150, Minneapolis, MN 55402