



COMMERCIAL

# OFFICE SPACE FOR LEASE 591 PARK AVENUE

IDAHO FALLS, IDAHO | 83402



2,665 TO 4,763 SF AVAILABLE

EXCELLENT DOWNTOWN IDAHO FALLS LOCATION

## CONTACT

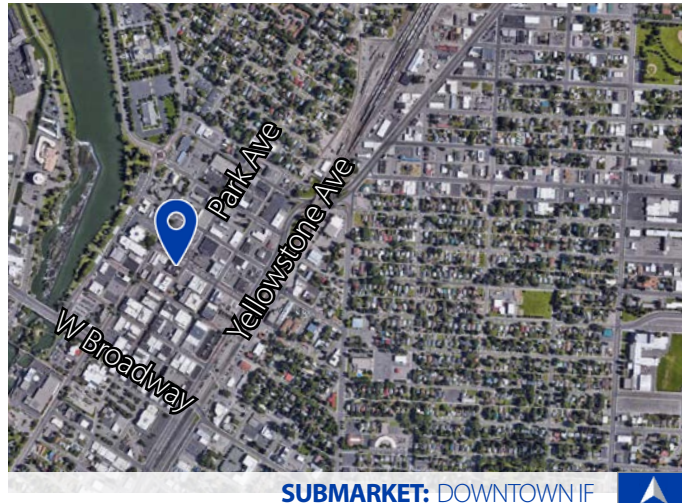
**Brent Wilson, CLS**

brent@tokcommercial.com

**Brian Wilson**

brian@tokcommercial.com

(208) 227-8148



SUBMARKET: DOWNTOWN IF



## PROPERTY INFORMATION

|                   |             |                    |                |
|-------------------|-------------|--------------------|----------------|
| <b>Submarket:</b> | Downtown IF | <b>Lease Type:</b> | Modified Gross |
| <b>Bldg Type:</b> | Office      | <b>Lot Size:</b>   | 0.39 Acres     |
| <b>Bldg Size:</b> | 19,426 SF   | <b>Year Built:</b> | 1916           |
| <b>Zoning</b>     | CC1         | <b>Renovated:</b>  | 1981           |
| <b>Available:</b> | Immediately |                    |                |

## AVAILABLE SPACE

| SPACE     | RSF      | RATE       |
|-----------|----------|------------|
| Suite 101 | 2,665 SF | \$11.00/SF |
| Suite 201 | 4,763 SF | \$12.00/SF |
| Suite 202 | 3,269 SF | \$12.00/SF |

[VIEW THE 360° TOUR](#)

## PROPERTY HIGHLIGHTS

Shared conference room.

Beautiful, historic downtown building.

Tenant pays portion of electric and gas.

Close to County Court House and local downtown area.

Reserved parking at no additional cost + free public on-street parking.

Suite 201: 3 Reserved Spaces

Suite 202: 3 Reserved Spaces

Suite 101: 2 Reserved Spaces

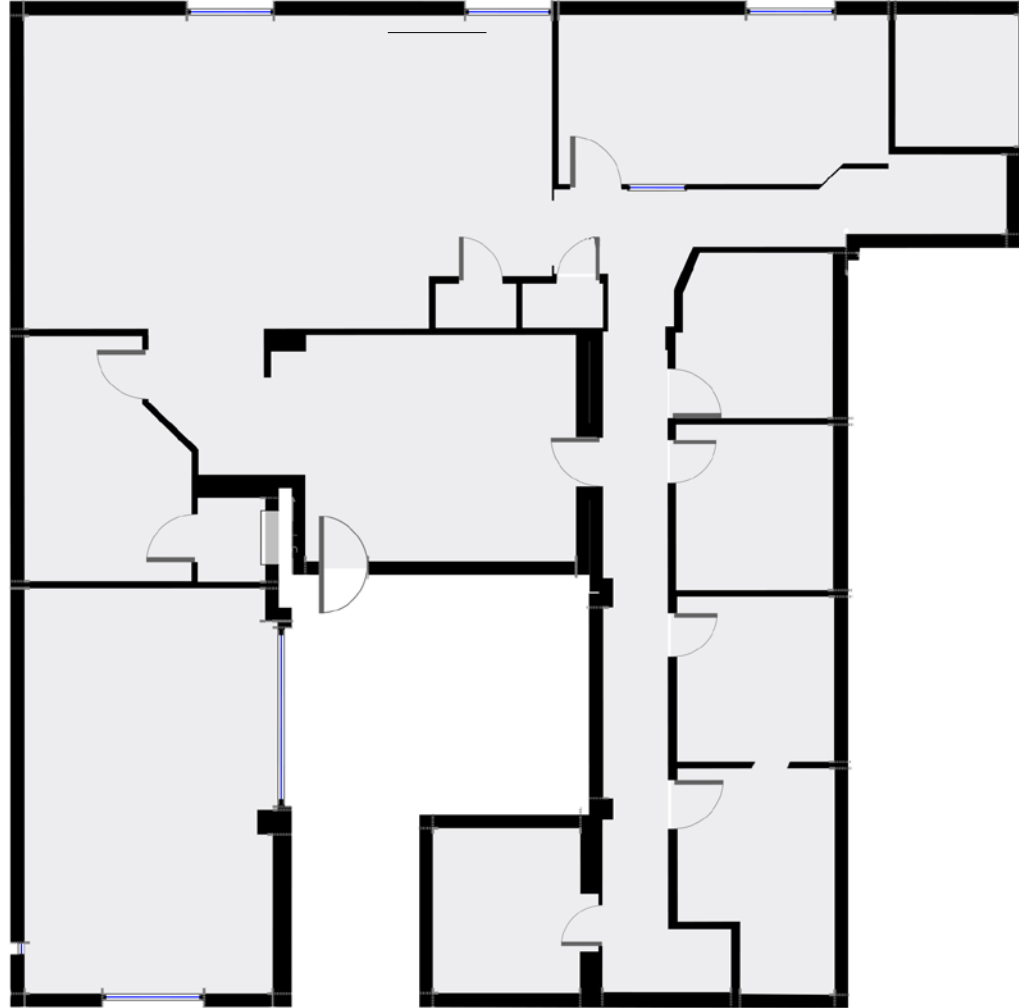


OFFICE SPACE FOR LEASE  
**591 PARK AVENUE**  
IDAHO FALLS, IDAHO | 83402

**SUITE 101**

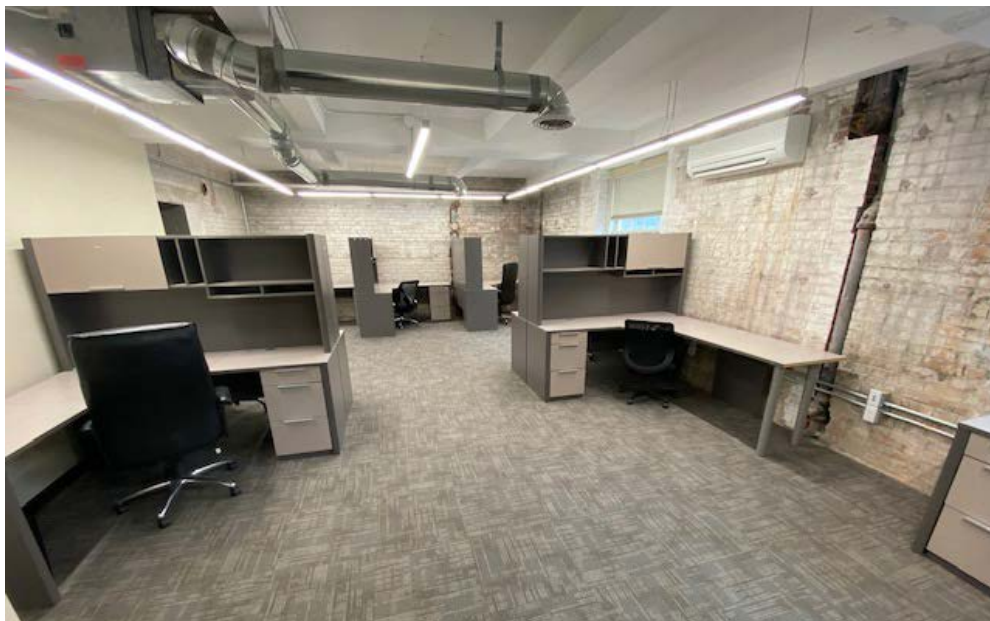
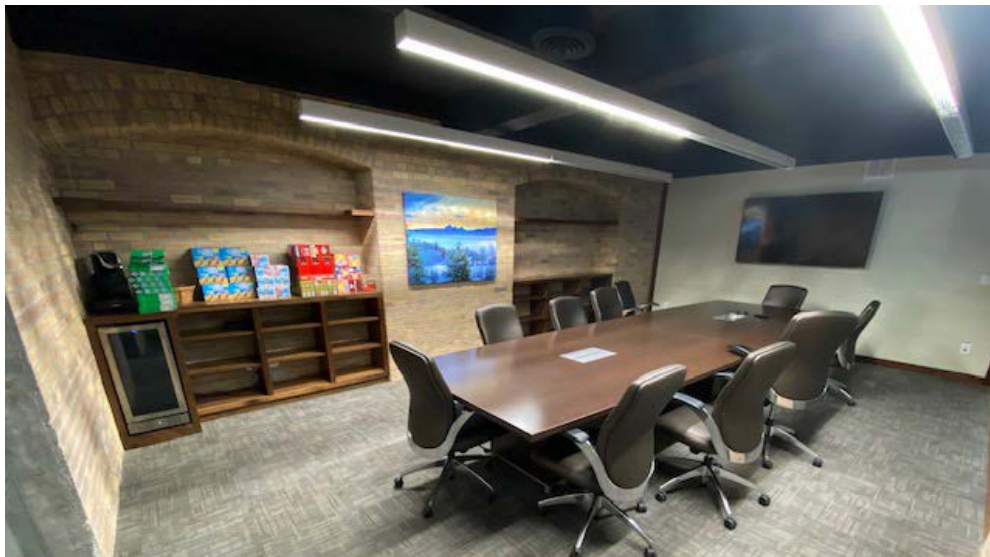
Floor Plan

2,665 SF AVAILABLE





## SUITE 101





## SUITE 201



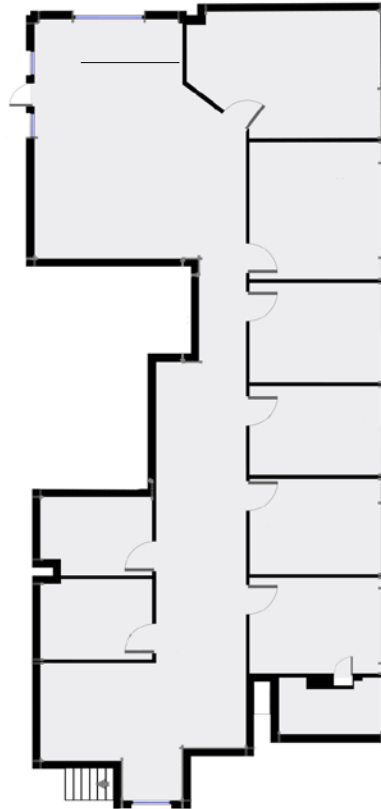


OFFICE SPACE FOR LEASE  
**591 PARK AVENUE**  
IDAHO FALLS, IDAHO | 83402

## SUITE 202

Floor Plan

3,269 SF AVAILABLE







OFFICE SPACE FOR LEASE  
**591 PARK AVENUE**  
IDAHO FALLS, IDAHO | 83402

[VIEW THE 360° TOUR](#)

## SUITE 202



Updated September 10, 2020

This information was obtained from sources believed reliable but cannot be guaranteed. Any opinions or estimates are used for example only.



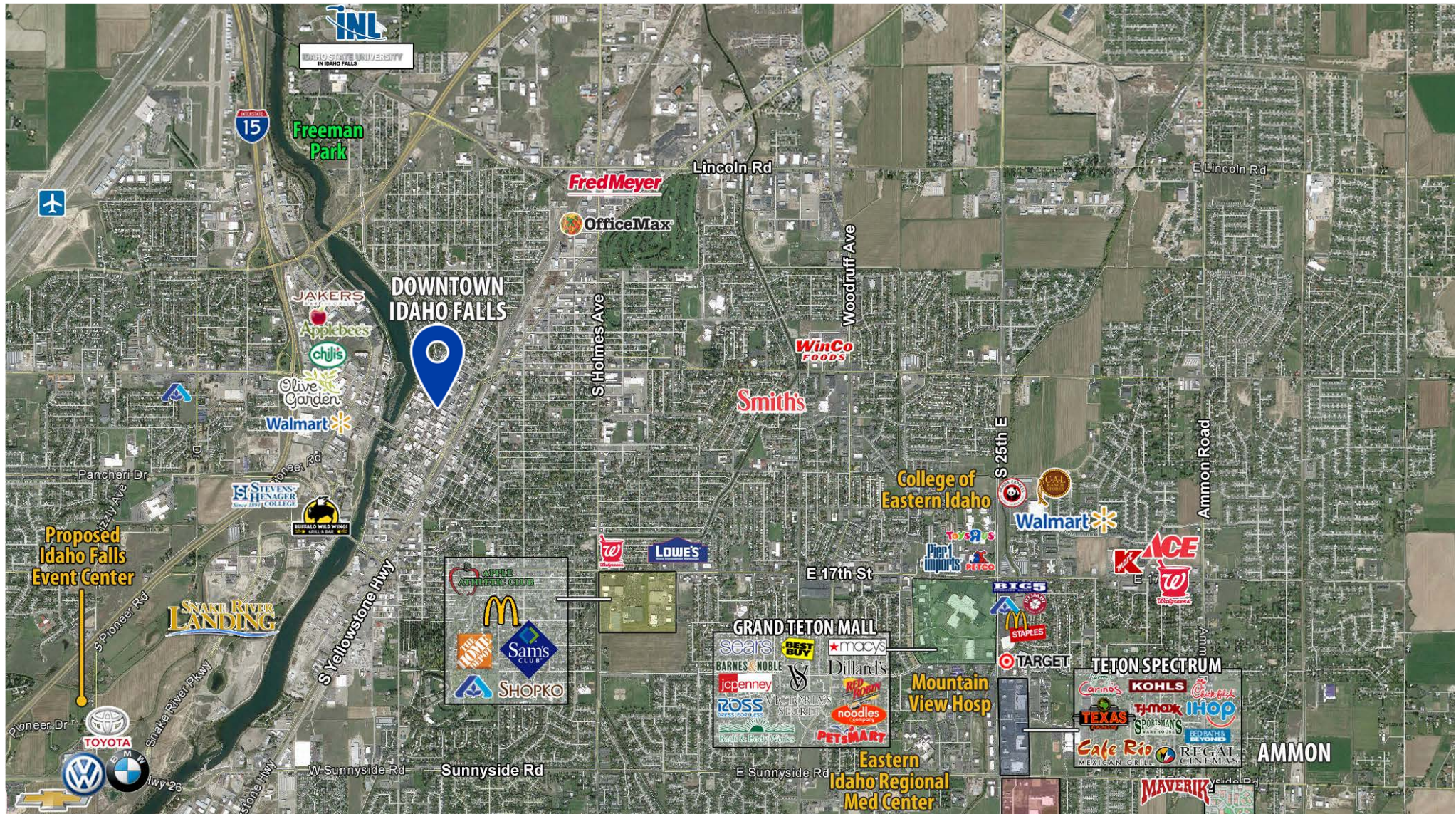


COMMERCIAL

# OFFICE SPACE FOR LEASE

## 591 PARK AVENUE

IDAHO FALLS, IDAHO | 83402



Updated September 10, 2020

This information was obtained from sources believed reliable but cannot be guaranteed. Any opinions or estimates are used for example only.