

FOR LEASE

LDC II

LYON DISTRIBUTION CENTER



**SIGNATURE
ASSOCIATES**
KNOW SIGNATURE | KNOW RESULTS

GRAND RIVER AVENUE LYON TOWNSHIP, MI

WWW.LYONDISTRIBUTIONCENTER.COM



AVAILABLE IMMEDIATELY | READY FOR TENANT IMPROVEMENTS

PROPERTY FEATURES

- 75,000 – 150,000 square feet for lease
- Office area to-suit
- 36' clear height
- (2) 13x14 grade level doors, (16) truckwells
- Zoned I-2
- 295 parking spaces plus trailer parking
- New construction of a 150,000 sq. ft. industrial / distribution building on highly traveled Grand River Ave
- Close to I-96 expressway
- Available Immediately
- Contact broker for pricing information



For more information, please contact:

STEVE GORDON

(248) 948 0101

sgordon@signatureassociates.com

SIGNATURE ASSOCIATES

One Towne Square, Suite 1200

Southfield, MI 48076

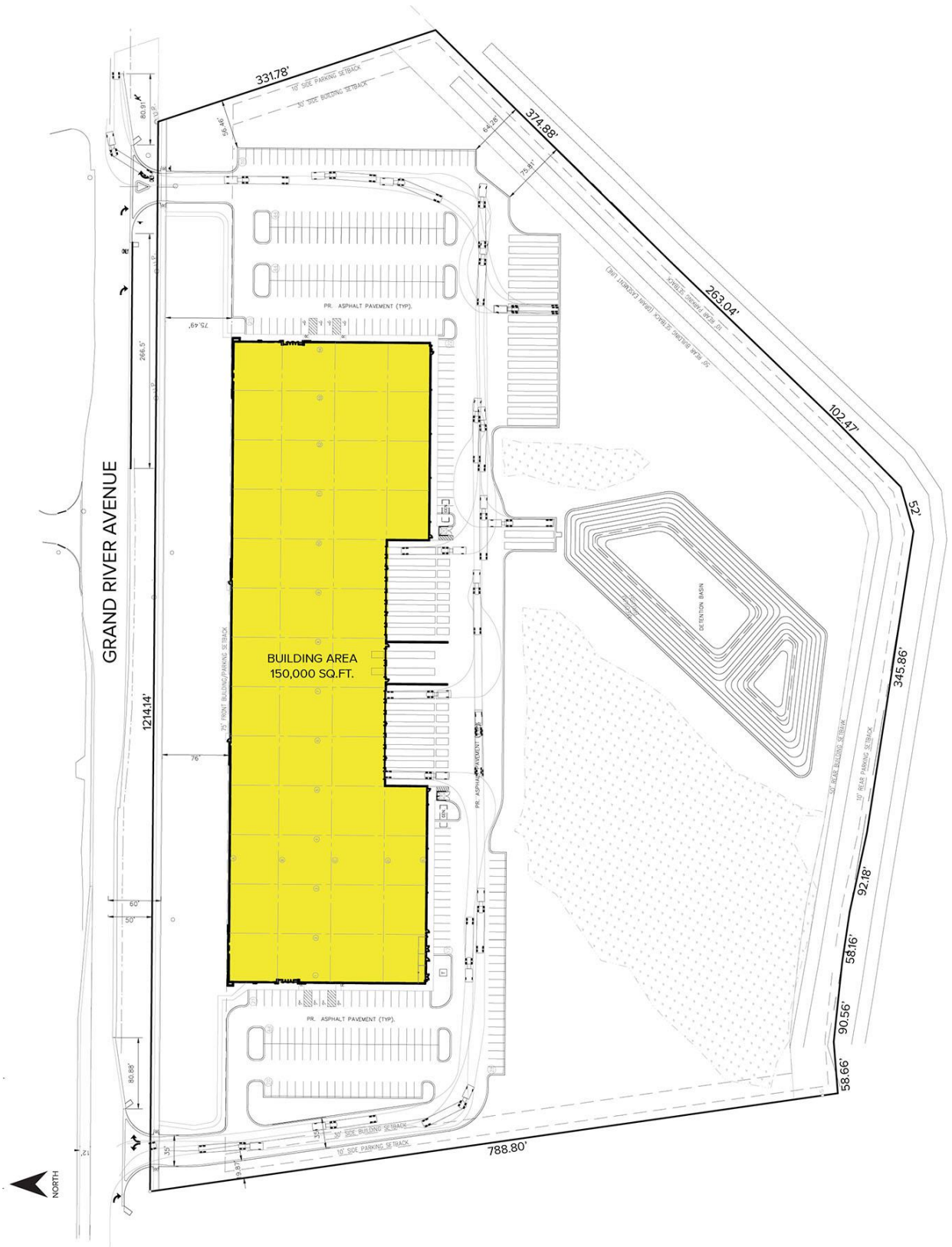
www.signatureassociates.com

FOR LEASE | 75,000 - 150,000 SQ. FT.

LDC II
LYON DISTRIBUTION CENTER

Grand River Avenue - Lyon Township, Michigan

Site Plan



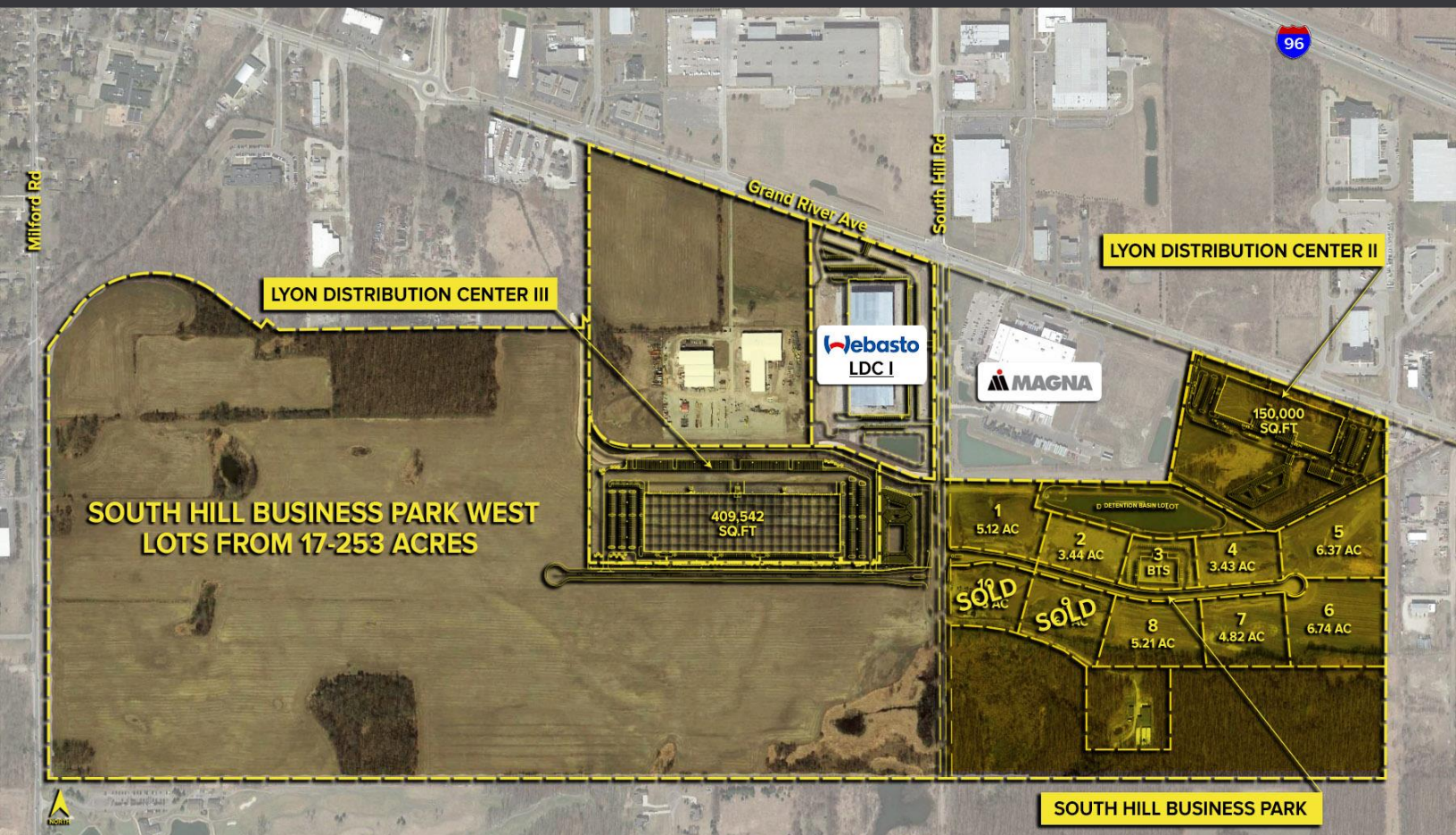
For more information, please contact:
STEVE GORDON
 (248) 948 0101
 sgordon@signatureassociates.com

SIGNATURE ASSOCIATES
 One Towne Square, Suite 1200
 Southfield, MI 48076
 www.signatureassociates.com

FOR LEASE | 75,000 - 150,000 SQ. FT.

Grand River Avenue - Lyon Township, Michigan

LDC II
LYON DISTRIBUTION CENTER



For more information, please contact:

STEVE GORDON

(248) 948 0101

sgordon@signatureassociates.com

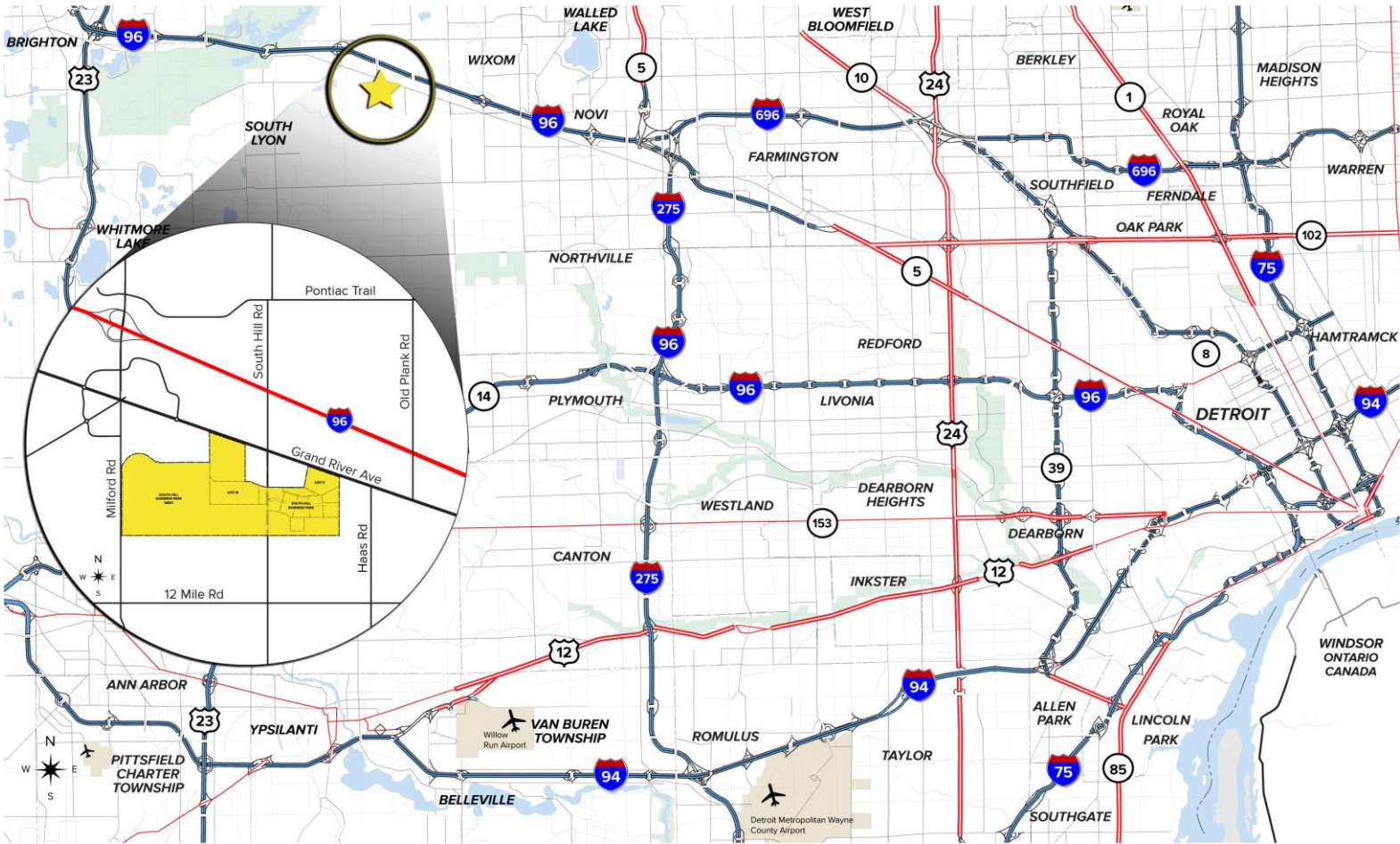
SIGNATURE ASSOCIATES
One Towne Square, Suite 1200
Southfield, MI 48076
www.signatureassociates.com

FOR LEASE | 75,000 - 150,000 SQ. FT.

Grand River Avenue - Lyon Township, Michigan

LDC II
LYON DISTRIBUTION CENTER

Regional Map



- 35-minute drive to Detroit Metro Airport and Flint Bishop Airport
- Water and sewer on-site
- Convenient I-96 freeway access to major businesses, industrial, and automotive headquarters in the region
- High average daily traffic counts on I-96 freeway, Milford Rd and Grand River Ave

DEMOGRAPHICS (5-MILE RADIUS)

POPULATION:	68,092
HOUSEHOLD INCOME:	\$112,546
NUMBER OF BUSINESSES:	3,061
DAYTIME EMPLOYEES:	37,161

For more information, please contact:

STEVE GORDON

(248) 948 0101

sgordon@signatureassociates.com

SIGNATURE ASSOCIATES

One Towne Square, Suite 1200

Southfield, MI 48076

www.signatureassociates.com