

For Lease

Office Suite

3,160 SF | \$14.00 SF/yr

NAI Latter & Blum



3815 Hessmer Avenue

Metairie, Louisiana 70002

Property Description

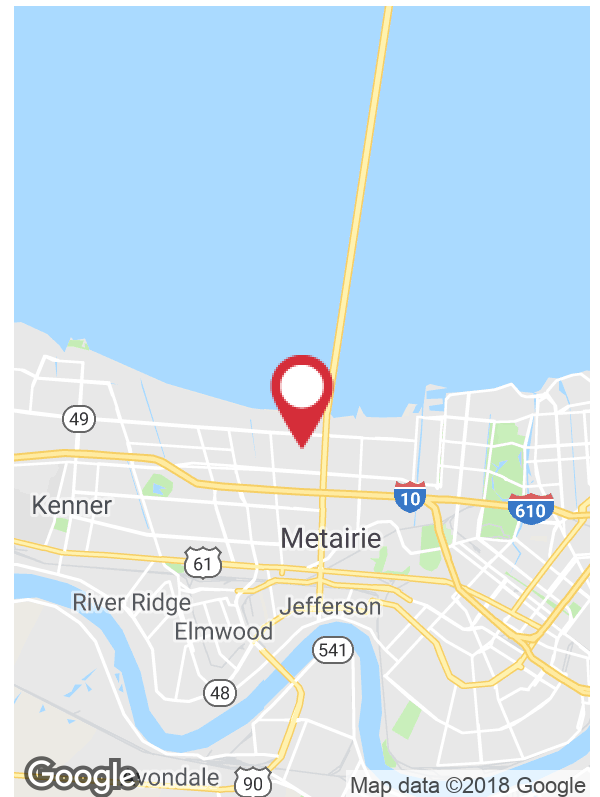
This eclectic second floor suite is accessible by elevator (and stairs) and is basically one large room with a classy industrial feel to it. It has a kitchen and enclosed office and storeroom, and is beautifully decorated. The new tenant would need to be a good mix with the plastic surgeon on the third floor. First floor is used for parking. A total of 14 spots are available. The parking lot is mostly vacant on Mondays and Fridays. Gates lock the parking lot at night. Large windows offer a great view of the sunsets. Tenant pays separate electric.

Available Spaces

Spaces	Lease Rate	Size (SF)
Suite 200	\$14.00 SF/yr	3,163

Lease Rate

\$14.00 SF/yr (MG)



For more information

Skip Weber, CCIM

O: 504 887 3929 | C: 504 884 1972
sweber@latterblum.com

CALL OR EMAIL FOR MORE INFORMATION

NO WARRANTY OR REPRESENTATION, EXPRESS OR IMPLIED, IS MADE AS TO THE ACCURACY OF THE INFORMATION CONTAINED HEREIN, AND THE SAME IS SUBMITTED SUBJECT TO ERRORS, OMISSIONS, CHANGE OF PRICE, RENTAL OR OTHER CONDITIONS, PRIOR SALE, LEASE OR FINANCING, OR WITHDRAWAL WITHOUT NOTICE, AND OF ANY SPECIAL LISTING CONDITIONS IMPOSED BY OUR PRINCIPALS NO WARRANTIES OR REPRESENTATIONS ARE MADE AS TO THE CONDITION OF THE PROPERTY OR ANY HAZARDS CONTAINED THEREIN ARE ANY TO BE IMPLIED. LICENSED IN LOUISIANA.

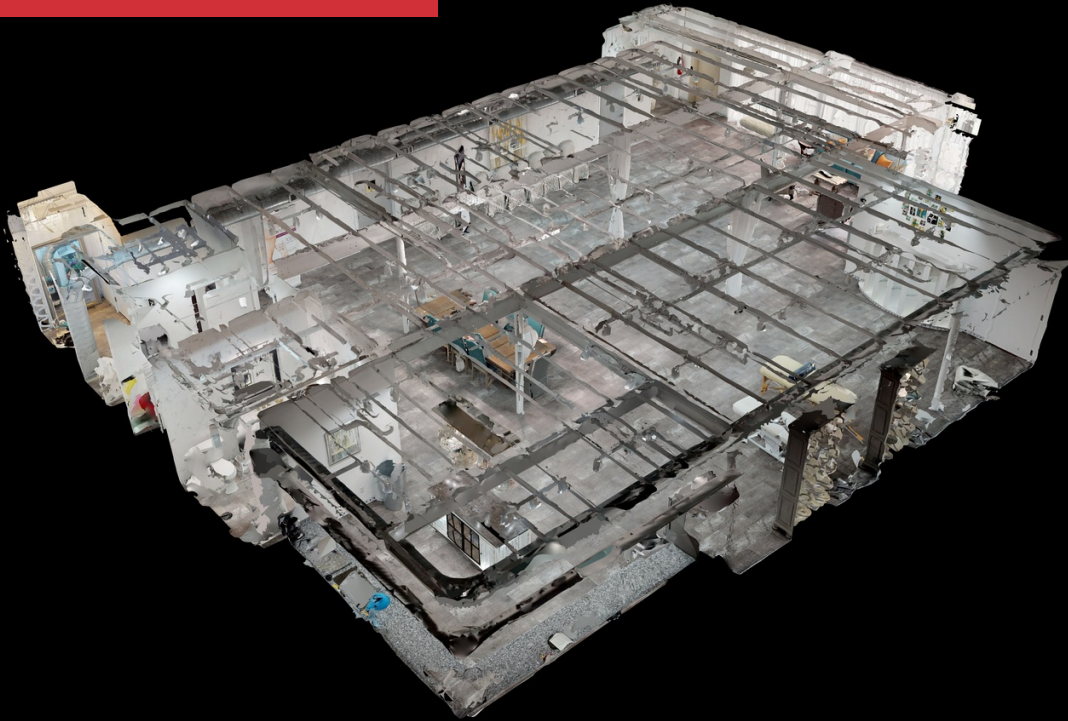
430 Notre Dame Street
New Orleans, LA 70130
504 525 1311 tel
latterblum.com

November 12, 2018

Additional Photos



Additional Photos



Location Maps

