

Fostoria Business Park - Building C

4461 S 134th Place
Tukwila, WA

Suite 4461:
3,720 SF total (including 370 SF
of office)

.....
\$3,300/month plus NNN's
\$0.2383 NNN (approximate)

.....
200 amps, 277/480v power

.....
±20' clear height

.....
1 DH door (box truck access only)
1 GL door

.....
Immediate access to I-5, I-405
and SR-599

.....
206 area code

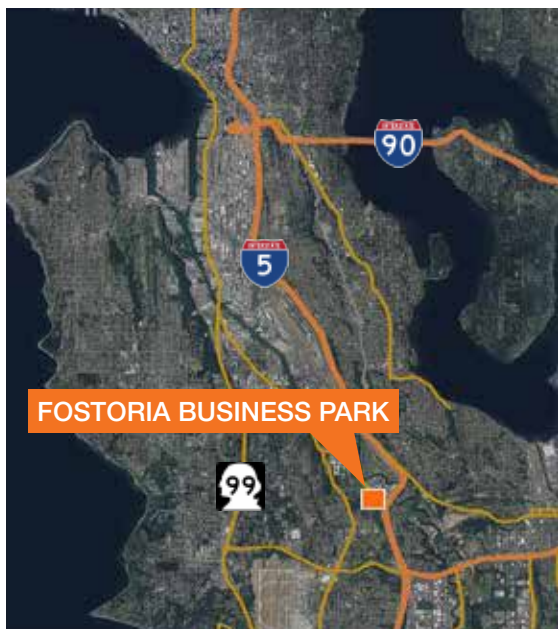
.....
Seattle mailing address

.....
No B&O tax

.....
Available with 30 days notice



fostoriabusinesspark.com

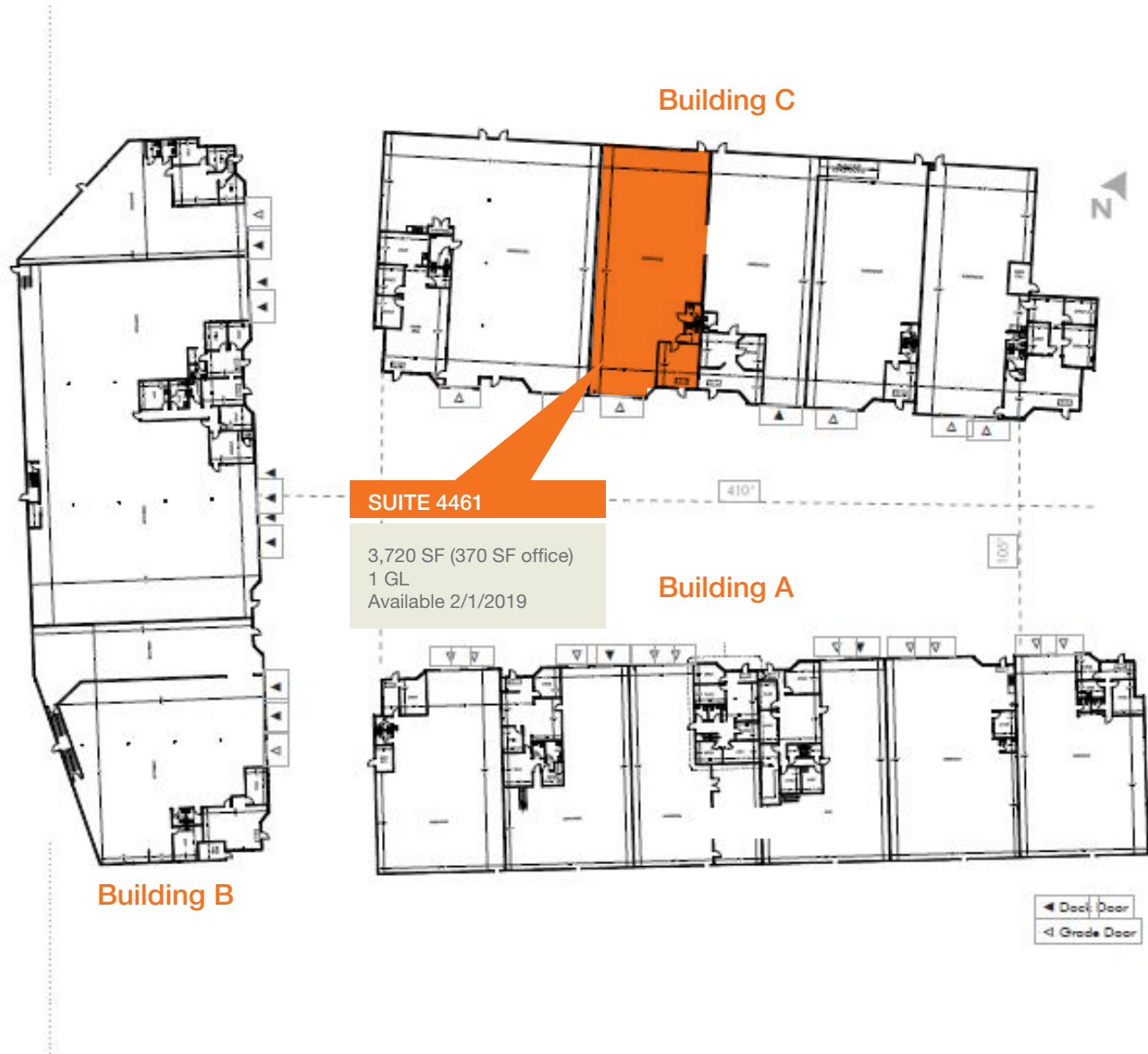


Contact

Evan Lugar
206.248.6505
elugar@kiddermathews.com

.....
Tony Miltenberger, SIOR
206.248.7307
tonym@kiddermathews.com

Fostoria Business Park - Building C



Contact

Evan Lugar
206.248.6505
elugar@kiddermathews.com

Tony Miltenberger, SIOR
206.248.7307
tonym@kiddermathews.com