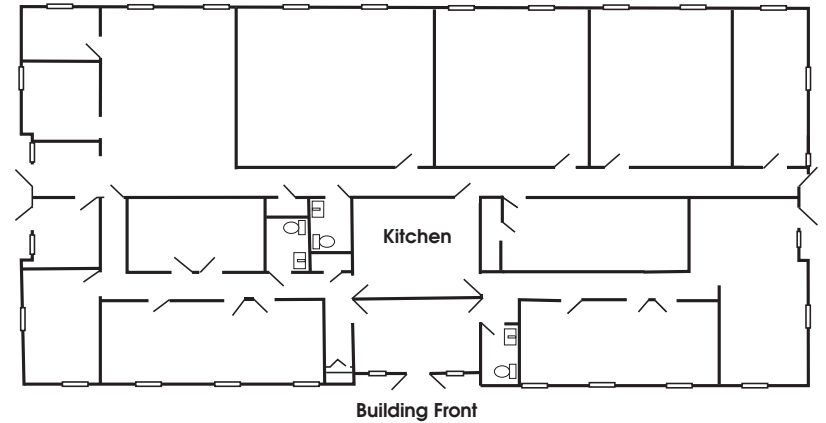


FOR LEASE

THE BOARDWALK COMPANY



(Drawing not to scale, for informational purposes only)

Lease Price: \$13-14 PSF
Modified Gross

BROOK EXECUTIVE PARK • PALM HARBOR, FL

Property #6176

- 3605 Alternate 19, Palm Harbor, FL 34683
- Free-standing office building in Brook Executive Park
- Large open rooms throughout, kitchen, and 3 restrooms
- Can be divided into two suites of 3,053 SF (mol)
- Pylon signage available
- Close to Wall Springs Park, near Publix, other shopping, and Highlands of Innisbrook
- Available December 1, 2016



For more information, contact

Judy Haner

office: 727.784.1007
fax: 727.784.1008
cell: 727.460.3032
realtysgal@boardwalkcompany.com

31640 U.S. Hwy. 19 N, Suite 1
Palm Harbor, Florida 34684

www.BoardwalkCompany.com
LICENSED REAL ESTATE BROKER

This information contained herein was collected from sources deemed to be reliable. The Boardwalk Company its Agents and Seller make no warranties or representations of any manner as to the accuracy, and the same is subject to misstatements of fact, errors or omissions, prior sale, change of price, terms, withdrawal from market without notice or other modifications. Buyer, tenants and/or all other parties shall verify all information independently.