

FOR SUBLEASE

12100
W. OLYMPIC BLVD

SUITE 300

LOS ANGELES, CALIFORNIA

CUSHMAN &
WAKEFIELD



SPACE PROFILE

- + **Type:** Sublease
- + **Address:** 12100 West Olympic Blvd, Suite 300
Los Angeles, CA
- + **Size:** 15,280 rentable square feet
- + **Term:** May 31, 2019
(longer term deal can be done on a direct basis)
- + **Rate:** Withheld
- + **Features:**
 - Bright and open creative space
 - Large conference and communal area
 - Above standard build-out
 - Mostly open workstations with interior and window line offices

FOR SUBLEASE

12100 W. OLYMPIC BLVD

SUITE 300
LOS ANGELES, CALIFORNIA



PHOTOS



ARLENE SOMMER

+1 310 595 2220
arlene.sommer@cushwake.com
CA Lic. #00616335

MARK ROBINSON

+1 310 595 2204
mark.robinson@cushwake.com
CA Lic. #00900438

KAI LAUREN KOLODZIEJSKI

+1 310 595 2214
kai.kolodziejski@cushwake.com
CA Lic. #01949482

KYLE ROBINSON

+1 310 595 2228
kyle.robinson@cushwake.com
CA Lic. # 02026703

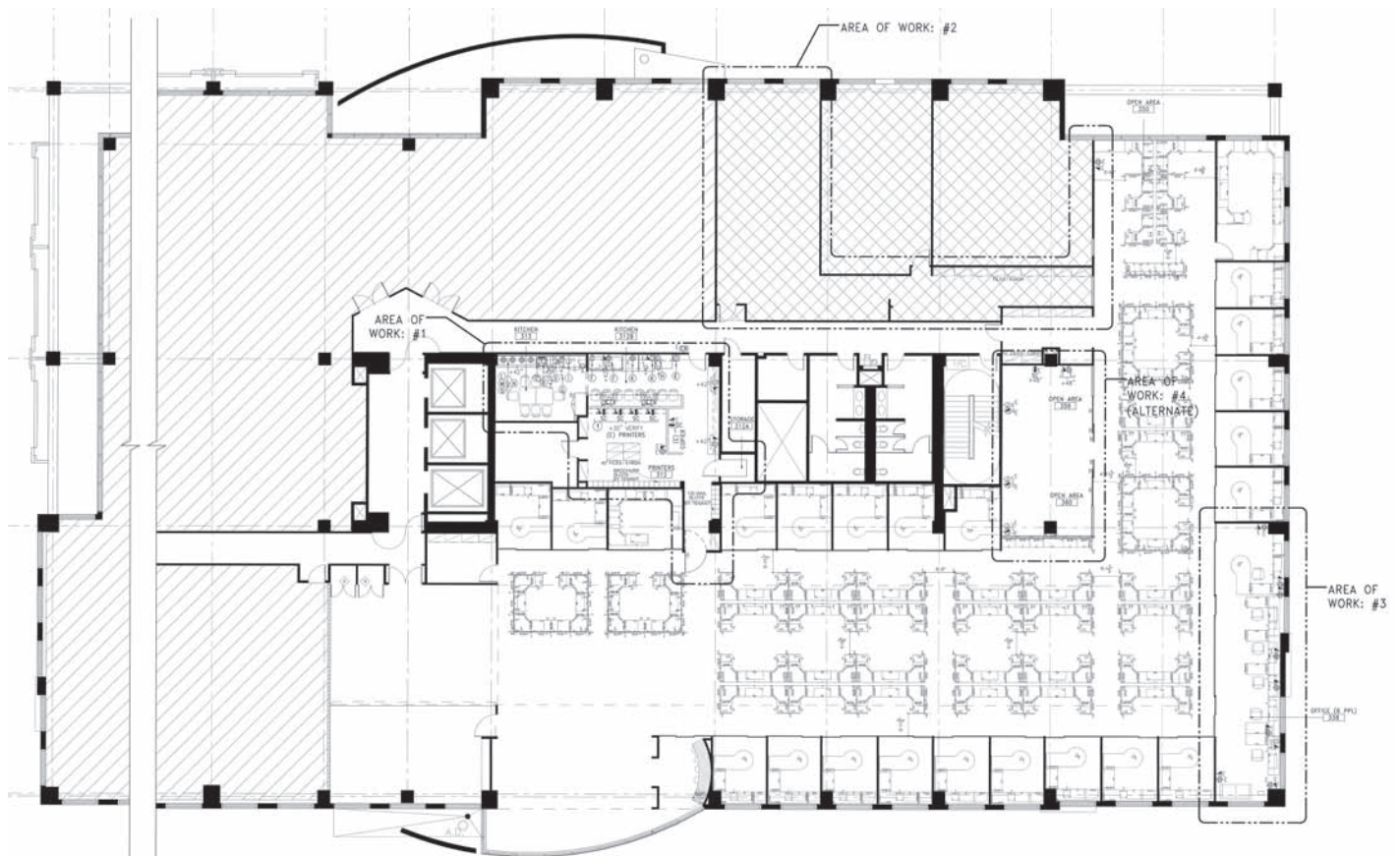
FOR SUBLEASE



12100 W. OLYMPIC BLVD

SUITE 300
LOS ANGELES, CALIFORNIA

FLOOR PLAN



ARLENE SOMMER

+1 310 595 2220
arlene.sommer@cushwake.com
CA Lic. #00616335

MARK ROBINSON

+1 310 595 2204
mark.robinson@cushwake.com
CA Lic. #00900438

KAI LAUREN KOLODZIEJSKI

+1 310 595 2214
kai.kolodziejski@cushwake.com
CA Lic. #01949482

KYLE ROBINSON

+1 310 595 2228
kyle.robinson@cushwake.com
CA Lic. # 02026703