



428 E Wisconsin Avenue Milwaukee, WI

Property Features

- In the heart of Milwaukee's CBD and the arts/entertainment district.
- Main & Main—fabulous exposure, windows on both Wisconsin Avenue and Jefferson Street
- Space opens into the opulent Pfister Hotel lobby
- Customers will be drawn from Milwaukee's booming daytime and residential population, professionals, millennials and high society
- Over 225,000 Pfister visitors to guest rooms, spa, restaurants, lounges and meeting spaces with 1,300 formal galas and 65 weddings each year
- Visiting NBA & MLB teams, celebrities, and political figures

For more information

Bruce Westling

414 908 9162

bnw@mlgcommercial.com

757 North Broadway Street, Suite 700

Milwaukee, WI 53202

414 347 9400

mlgcommercial.com

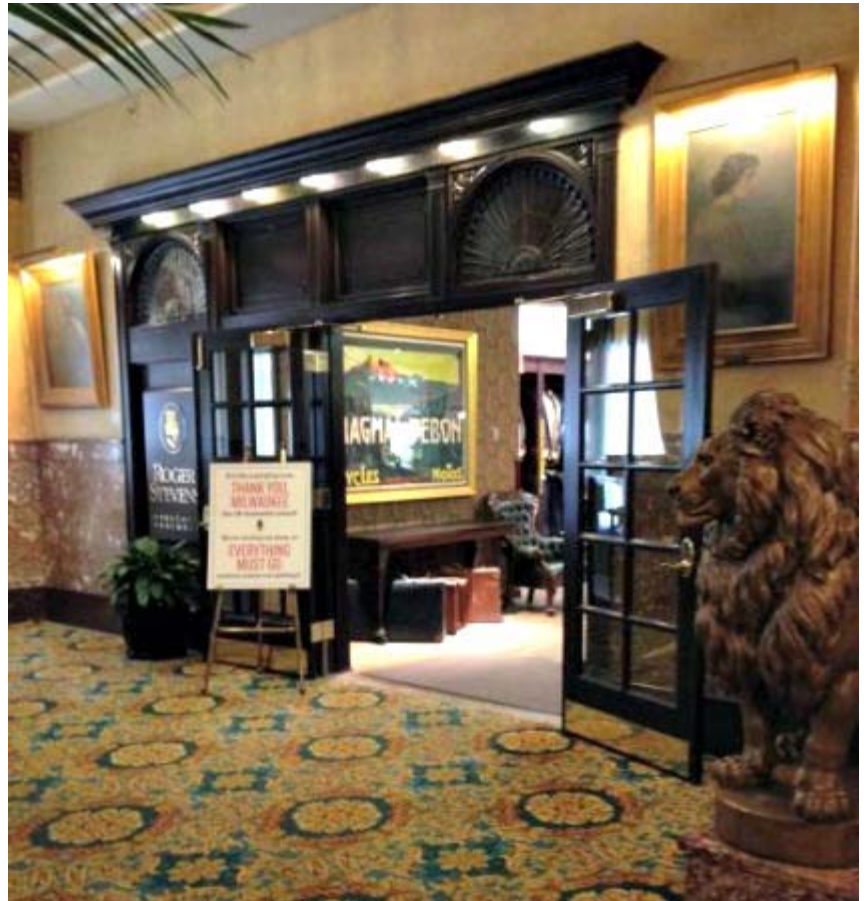
Offices in Milwaukee and Madison, WI

Information shown herein was provided by the Seller/Lessor and/or other third parties and has not been verified by the broker unless otherwise indicated.

10466T

The Pfister 1st Floor

Available Space	3,160 SF in Suite 1 2,232 SF in Suite 2
Hotel Rooms	307 high-end rooms and suites
Signage	Awnings, internal signage
Lease Rate	Contact Broker



Retail Space Main Entrance in Lobby

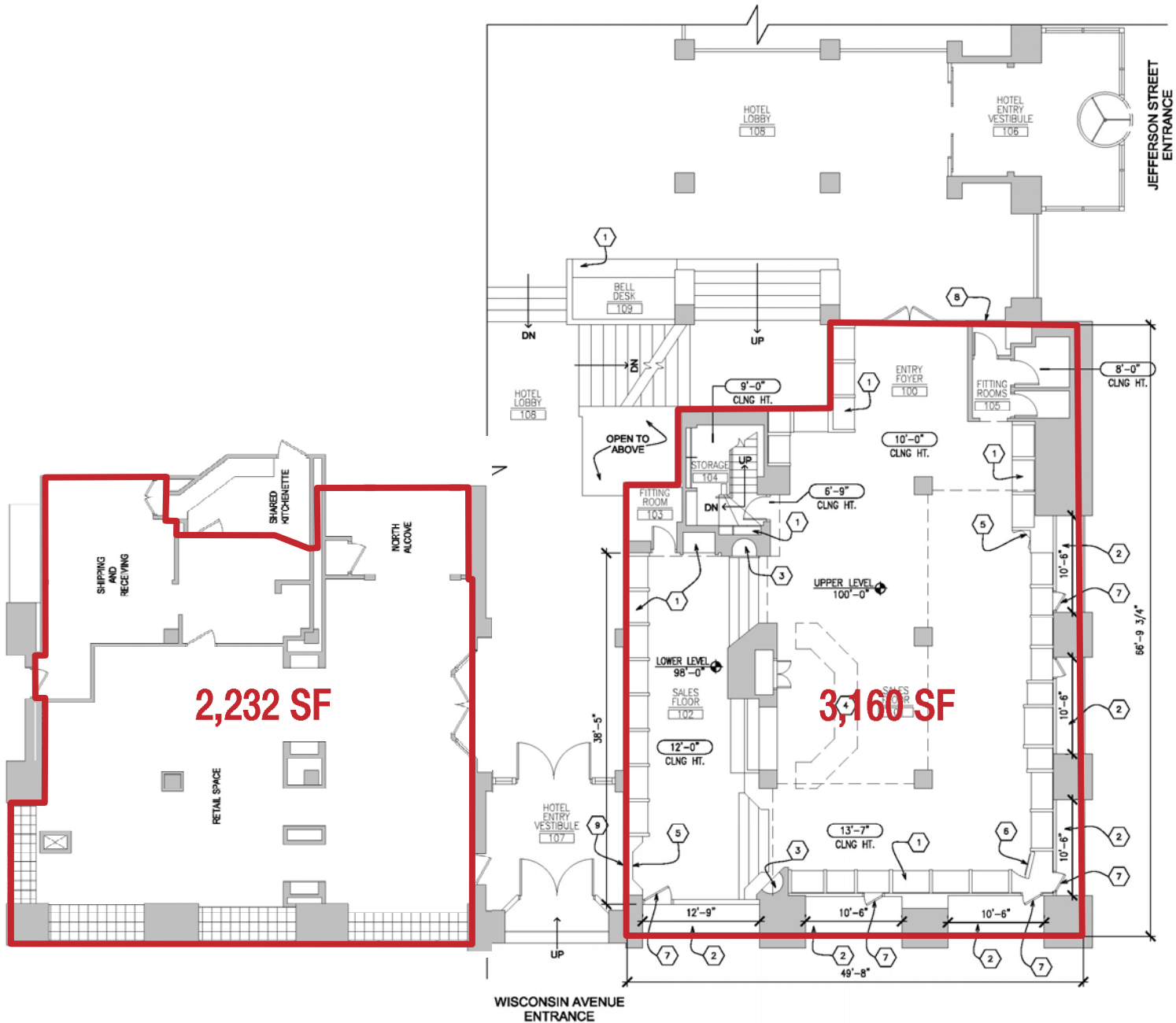
Demographics

	1 Mile	2 Miles	3 Miles
Population	18,638	79,068	198,300
Households	10,459	35,593	78,263
Median HH Inc.	\$55,002	\$34,710	\$31,126
Employees	81,033	124,757	158,420



The Pfister

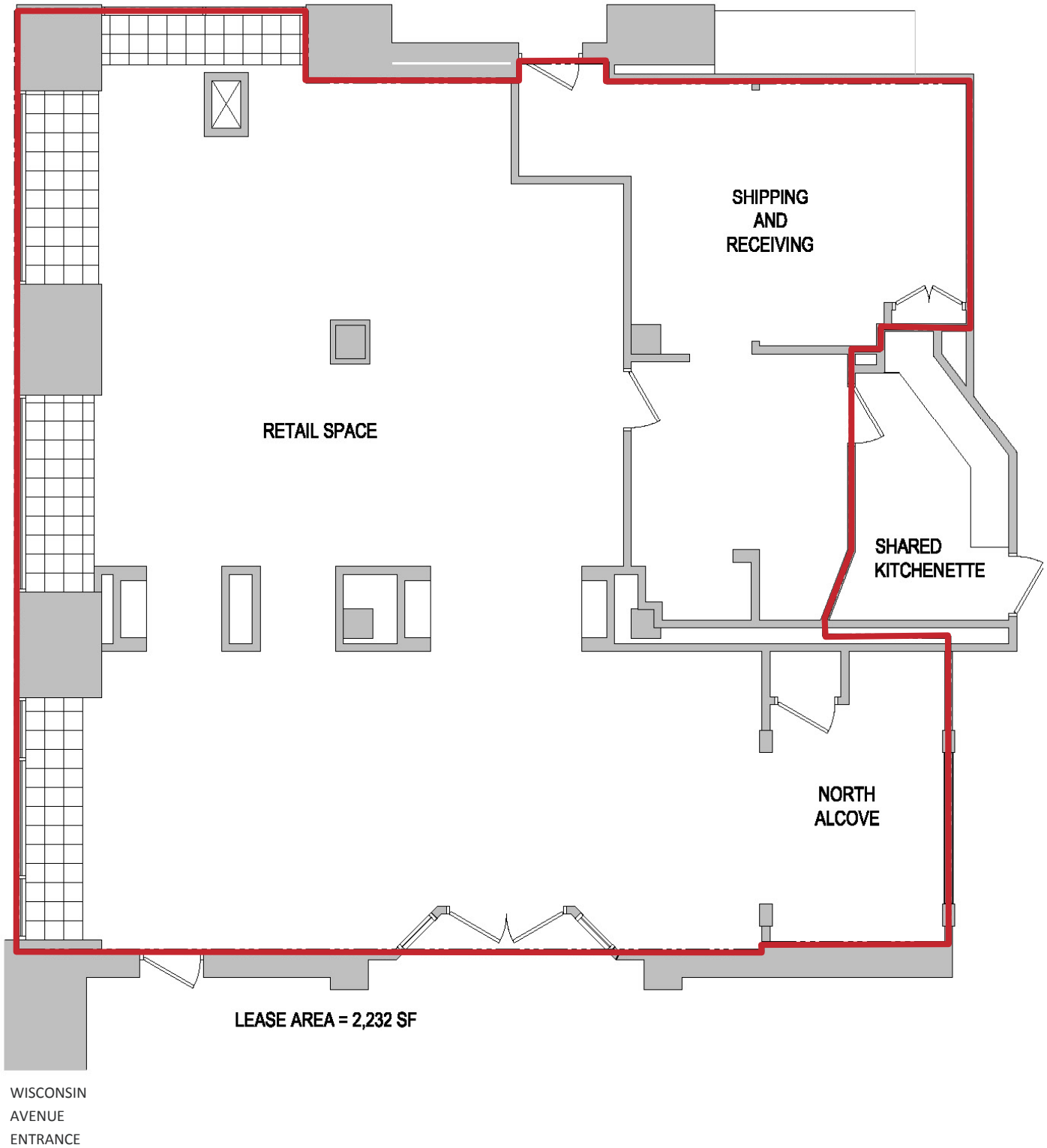
1st Floor Retail





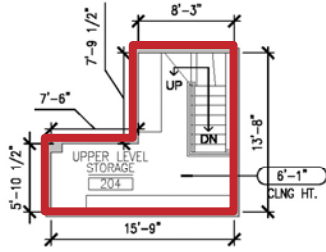
The Pfister

1st Floor - Suite 2



The Pfister

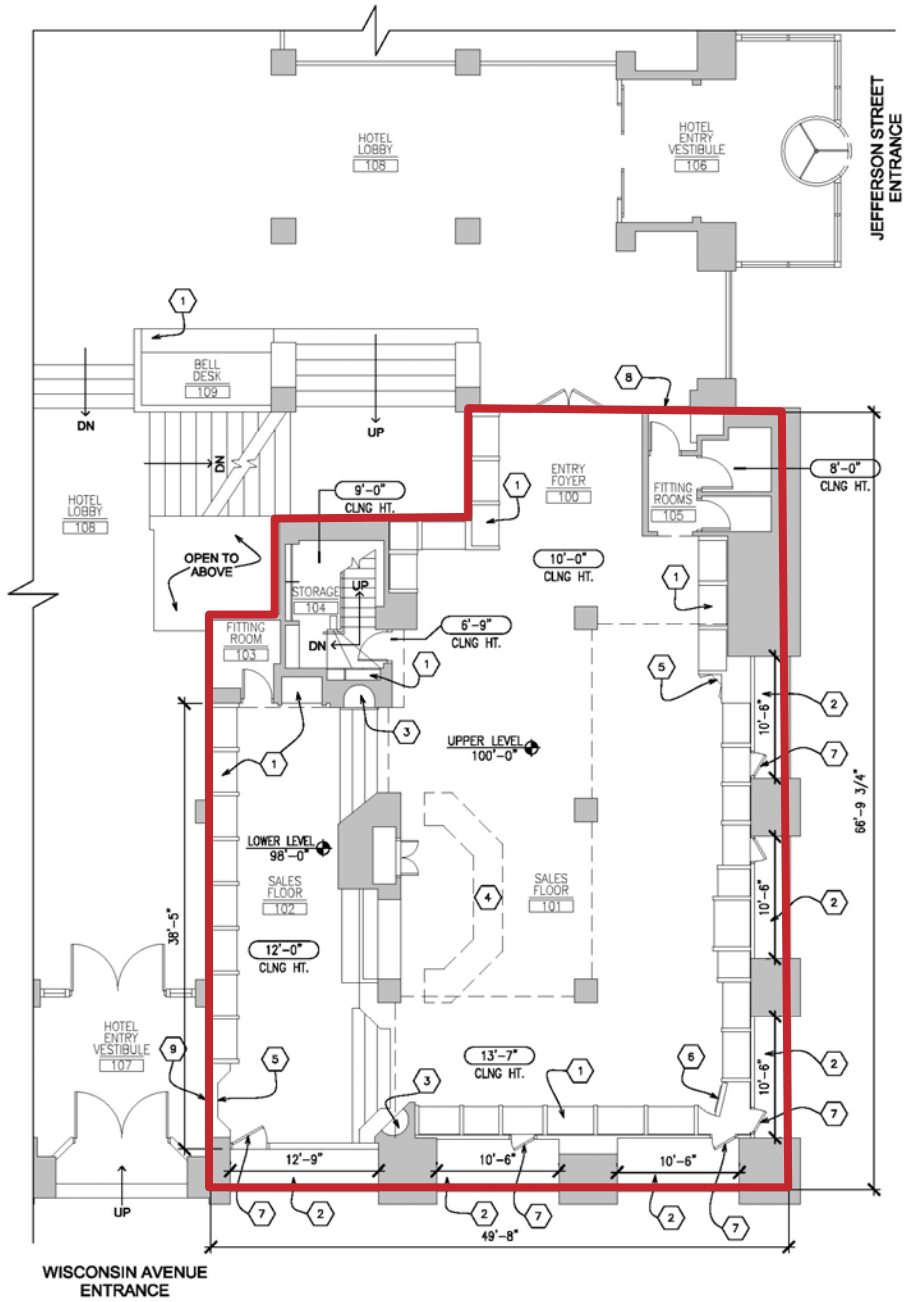
1st Floor - Suite 1



USABLE OCCUPANT AREA	
LEVEL 1 =	3160 SF.
UPPER STORAGE =	125 SF.
TOTAL =	3285 SF.

Areas shown are per 2010 BOMA measurement standards. Existing plan drawings are based on architect's field measurements and visual observations only.

KEY NOTES	
EXISTING COMPONENTS	
1	BUILT IN WOOD CASEWORK
2	STOREFRONT DISPLAY CASE
3	DISPLAY ALCOVE
4	SALES COUNTER - UNVERIFIED
5	THREE PANEL MIRROR
6	DOOR MOUNTED MIRROR
7	STOREFRONT DISP. ACCESS PANEL (HIDDEN)
8	ENTRY SIGNAGE PANEL
9	CONCEALED ACCESS DOOR



State of Wisconsin Broker Disclosure to Non-Residential Customers

Prior to negotiating on your behalf the Broker must provide you the following disclosure statement.

BROKER DISCLOSURE TO CUSTOMERS

You are the customer of the broker. The broker is either an agent of another party in the transaction or a subagent of another broker who is the agent of another party in the transaction. The broker, or a salesperson acting on behalf of the broker, may provide brokerage services to you.

Whenever the broker is providing brokerage services to you, the broker owes you, the customer, the following duties:

- The duty to provide brokerage services to you fairly and honestly.
- The duty to exercise reasonable skill and care in providing brokerage services to you.
- The duty to provide you with accurate information about market conditions within a reasonable time if you request it, unless disclosure of the information is prohibited by law.
- The duty to disclose to you in writing certain material adverse facts about a property, unless disclosure of the information is prohibited by law (see "Definition of Material Adverse Facts" below).
- The duty to protect your confidentiality. Unless the law requires it, the broker will not disclose your confidential information or the confidential information of other parties (see "Confidentiality Notice To Customers" below).
- The duty to safeguard trust funds and other property the broker holds.
- The duty, when negotiating, to present contract proposals in an objective and unbiased manner and disclose the advantages and disadvantages of the proposals.

Please review this information carefully. A broker or salesperson can answer your questions about brokerage services, but if you need legal advice, tax advice, or a professional home inspection, contact an attorney, tax advisor, or home inspector.

This disclosure is required by section 452.135 of the Wisconsin statutes and is for information only. It is a plain-language summary of a broker's duties to a customer under section 452.133 (1) of the Wisconsin statutes.

CONFIDENTIALITY NOTICE TO CUSTOMERS

Broker will keep confidential any information given to broker in confidence, or any information obtained by broker that he or she knows a reasonable person would want to be kept confidential unless the information must be disclosed by law or you authorize the broker to disclose particular information. A broker shall continue to keep the information confidential after broker is no longer providing brokerage services to you. The following information is required to be disclosed by law.

Wisconsin law requires all real estate licensees to give the following information about brokerage services to prospective customers.

1. Material adverse facts, as defined in section 452.01 (5g) of the Wisconsin statutes (see "definition of material adverse facts" below).
2. Any facts known by the broker that contradict any information included in a written inspection report on the property or real estate that is the subject of the transaction. To ensure that the broker is aware of what specific information you consider confidential, you may list that information below. At a later time, you may also provide the broker with other information that you consider to be confidential.

CONFIDENTIAL INFORMATION: _____

NON-CONFIDENTIAL INFORMATION (The following information may be disclosed by Broker): _____

(INSERT INFORMATION YOU AUTHORIZE THE BROKER TO DISCLOSE SUCH AS FINANCIAL QUALIFICATION INFORMATION)

CONSENT TO TELEPHONE SOLICITATION

I/We agree that the Broker and any affiliated settlement service providers (for example, a mortgage company or title company) may call our/my home or cell phone numbers regarding issues, goods and services related to the real estate transaction until I/we withdraw this consent in writing. List Home/Cell Numbers:

SEX OFFENDER REGISTRY

Notice: You may obtain information about the sex offender registry and persons registered with the registry by contacting the Wisconsin Department of Corrections on the Internet at <http://offender.doc.state.wi.us/public/> or by phone at 608-240-5830.

DEFINITION OF MATERIAL ADVERSE FACTS

A "material adverse fact" is defined in Wis. Stat. 452.01 (5g) as an adverse fact that a party indicates is of such significance, or that is generally recognized by a competent licensee as being of such significance to a reasonable party that it affects or would affect the party's decision to enter into a contract or agreement concerning a transaction or affects or would affect the party's decision about the terms of such a contract or agreement. An "adverse fact" is defined in Wis. Stat. 452.01 (1e) as a condition or occurrence that a competent licensee generally recognizes will significantly and adversely affect the value of the property, significantly reduce the structural integrity of improvements to real estate, or present a significant health risk to occupants of the property, or information that indicates that a party to a transaction is not able to or does not intend to meet his or her obligations under a contract or agreement made concerning the transaction.

No representation is made as to the legal validity of any provision or the adequacy of any provision on any specific transaction