



1331 Alameda Street
Norman, Oklahoma 73071

PROPERTY HIGHLIGHTS

- Previously Chelino's Mexican Restaurant
- Drive Thru Capabilities
- 14' Vent Hood
- Walk-In Cooler & Freezer
- Zoned: C-2

LOCATION HIGHLIGHTS

- Directly East of Homeland Grocery
- Less than 2 Miles from the University of Oklahoma Campus
- Neighboring restaurants Chick-fil-A, McDonald's, Burger King & KFC



www.naisullivangroup.com

David Hartnack

Cell: 1 405 761 8955

davidh@naisullivangroup.com

Sam Swanson

Cell: 1 405 208 2046

sam@naisullivangroup.com

4045 N.W. 64th Street, Suite 340

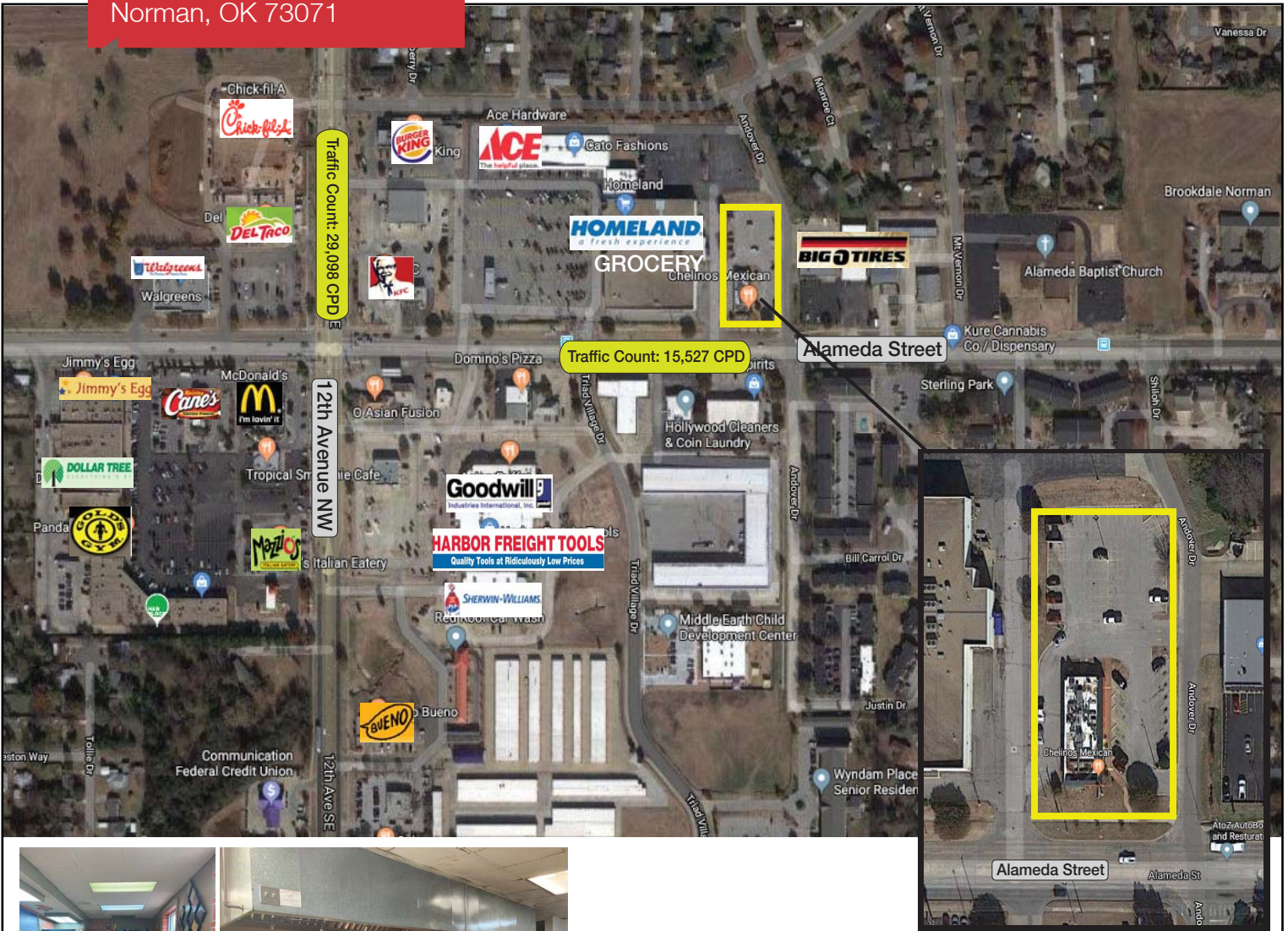
Oklahoma City, Oklahoma 73116

Office: 1 405 840 0600

Fax: 1 405 840 0610

NO WARRANTY OR REPRESENTATION, EXPRESS OR IMPLIED, IS MADE AS TO THE ACCURACY OF THE INFORMATION CONTAINED HEREIN, AND THE SAME IS SUBMITTED SUBJECT TO ERRORS, OMISSIONS, CHANGE OF PRICE, RENTAL OR OTHER CONDITIONS, PRIOR SALE, LEASE OR FINANCING, OR WITHDRAWAL WITHOUT NOTICE, AND OF ANY SPECIAL LISTING CONDITIONS IMPOSED BY OUR PRINCIPALS NO WARRANTIES OR REPRESENTATIONS ARE MADE AS TO THE CONDITION OF THE PROPERTY OR ANY HAZARDS CONTAINED THEREIN ARE ANY TO BE IMPLIED.

1331 Alameda Street
Norman, OK 73071



DEMOGRAPHICS

Population		
1 Mile: 11,834	3 Mile: 75,735	5 Mile: 108,964
Average Household Income		
1 Mile: \$43,649	3 Mile: \$45,919	5 Mile: \$53,127
Total Households		
1 Mile: 5,181	3 Mile: 30,287	5 Mile: 44,432

David Hartnack

Cell: 1 405 761 8955

davidh@naisullivangroup.com

Sam Swanson

Cell: 1 405 208 2046

sam@naisullivangroup.com

www.naisullivangroup.com

NAISullivan Group

4045 N.W. 64th Street, Suite 340
Oklahoma City, Oklahoma 73116
Office: 1 405 840 0600
Fax: 1 405 840 0610