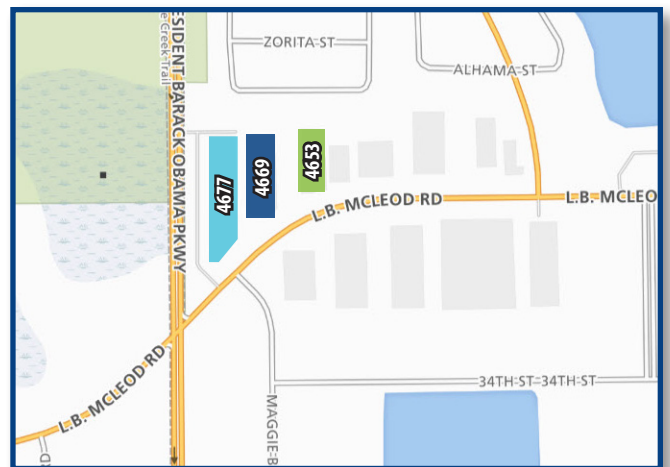




OPPORTUNITY

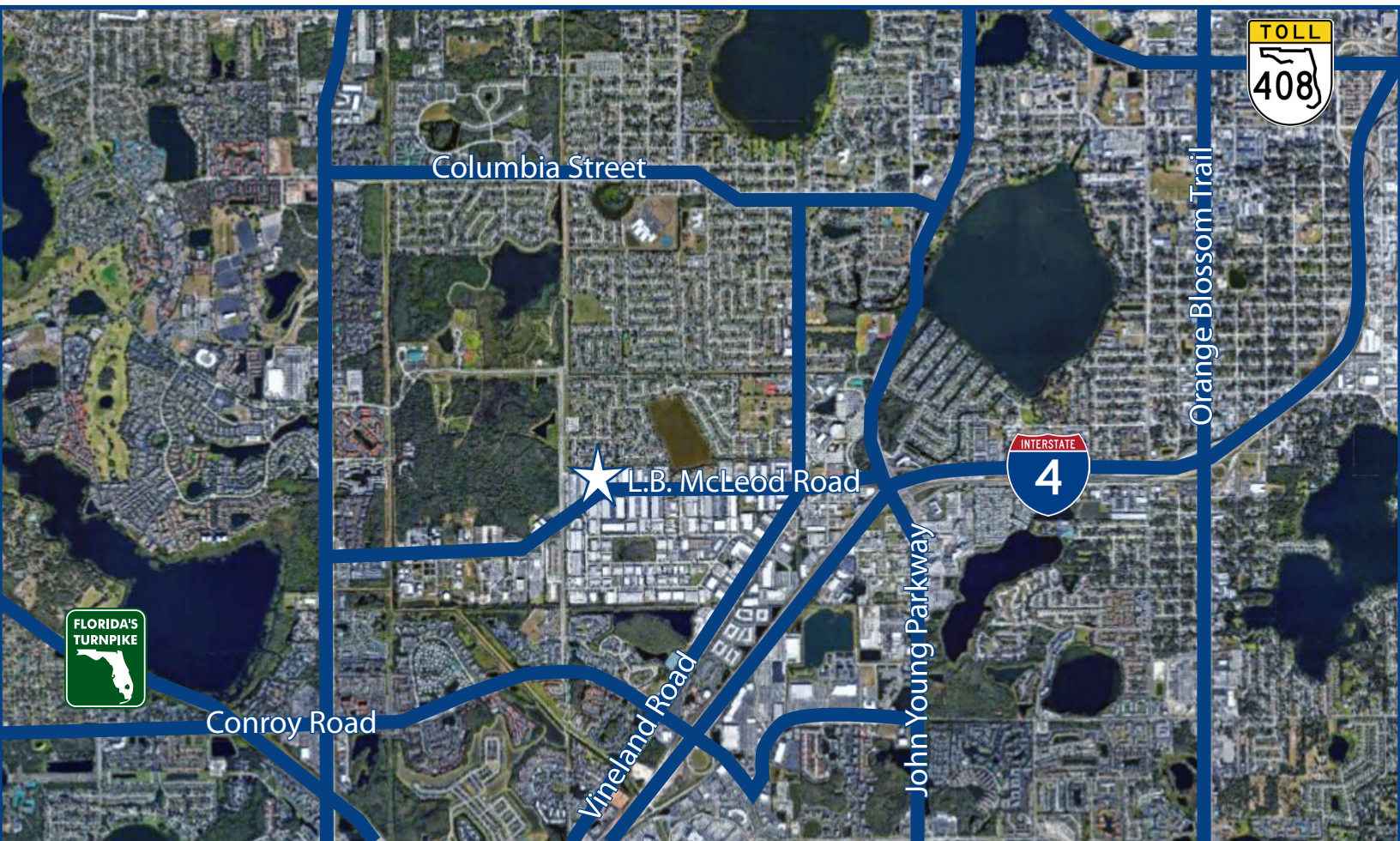
Triplex is an excellent office/warehouse distribution location in close proximity to Interstate 4, Kirkman Road, John Young Parkway, International Drive and the Florida Turnpike. The tourist corridor is nearby, including amenities like the Millenia Mall and Universal Studios.

OFFICE/WAREHOUSE



Lisa Bailey, SIOR, Principal
D 407 440 6645
C 407 595 9233
lisa.bailey@avisonyoung.com

135 W Central Blvd
Suite 700
Orlando, FL 32801



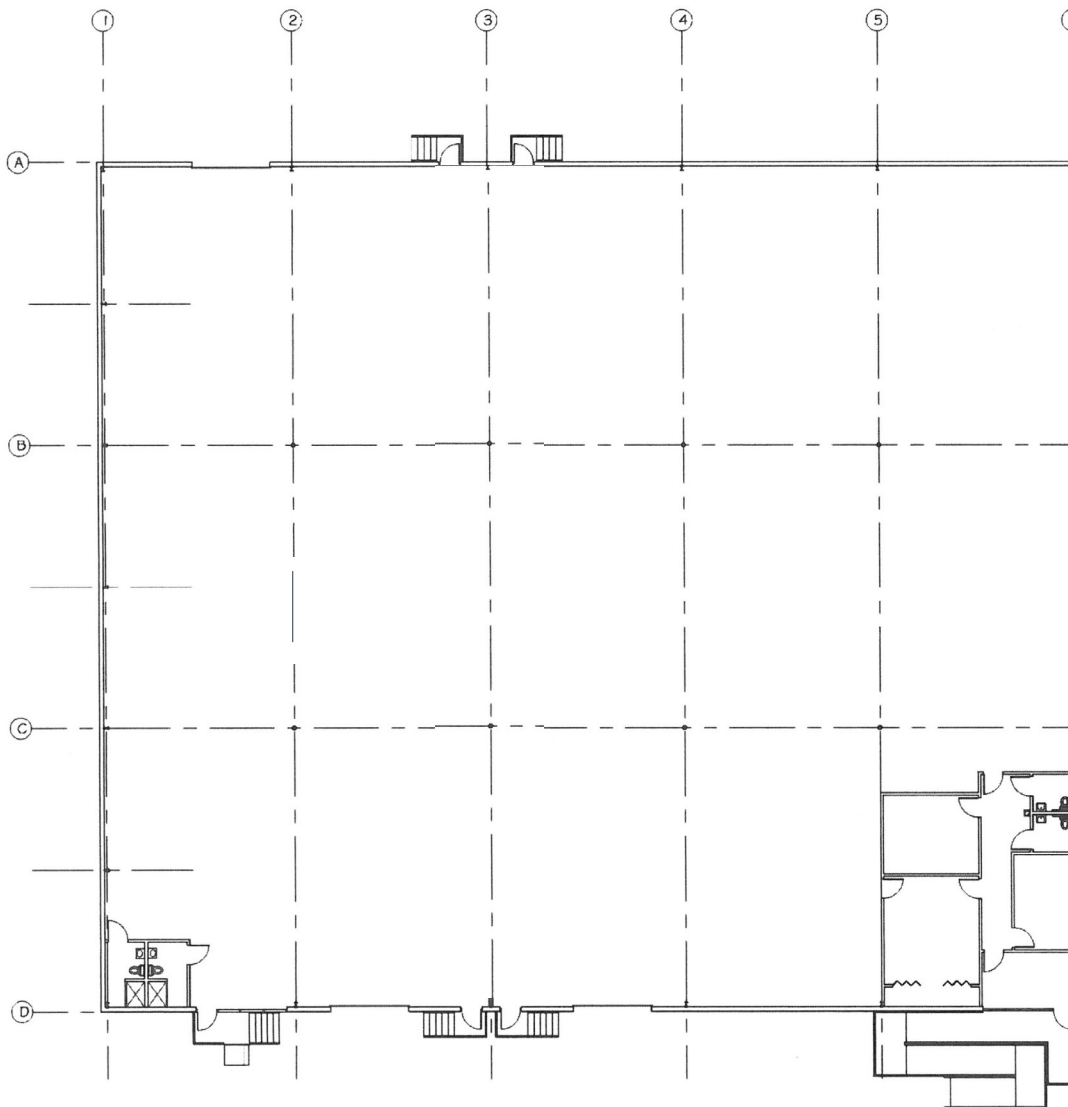
PROPERTY HIGHLIGHTS

- Three office/warehouse buildings totaling 212,815± sf
- 20' clear height
- Column spacing: 30' x 50' (150' deep)
- Dock high loading
- Concrete block and metal construction
- Parking ratio: 2/1,000 sf
- Excellent distribution location in close proximity to Interstate 4, Kirkman Road, John Young Parkway, International Drive and the Florida Turnpike

Lisa Bailey, SIOR, Principal
D 407 440 6645
C 407 595 9233
lisa.bailey@avisonyoung.com

135 W Central Blvd
Suite 700
Orlando, FL 32801

4653-C
19,500± sf



Lisa Bailey, SIOR, Principal
D 407 440 6645
C 407 595 9233
lisa.bailey@avisonyoung.com

135 W Central Blvd
Suite 700
Orlando, FL 32801