

HAVRE DE GRACE OFFICE SPACE

400 Lewis Street



FOR LEASE

Affordable, well maintained, first floor office space. Ideal for professional engineer, Medical, Social work, Accountant, Insurance agent etc. Corner location. Adjacent to Harford Memorial Hospital. Off street parking included. Your employees can enjoy a short stroll down the tree lined Union Ave, to Tydings Park for lunch breaks. Only 5 miles to Aberdeen Proving Grounds. Immediate Occupancy! Questions about allowed use and zoning? Contact the City of Havre de Grace 410.939.1800.



Cecil Hill, Jr.
Chill@cbmove.com
D: 410.515.8275 O:410.515.2000



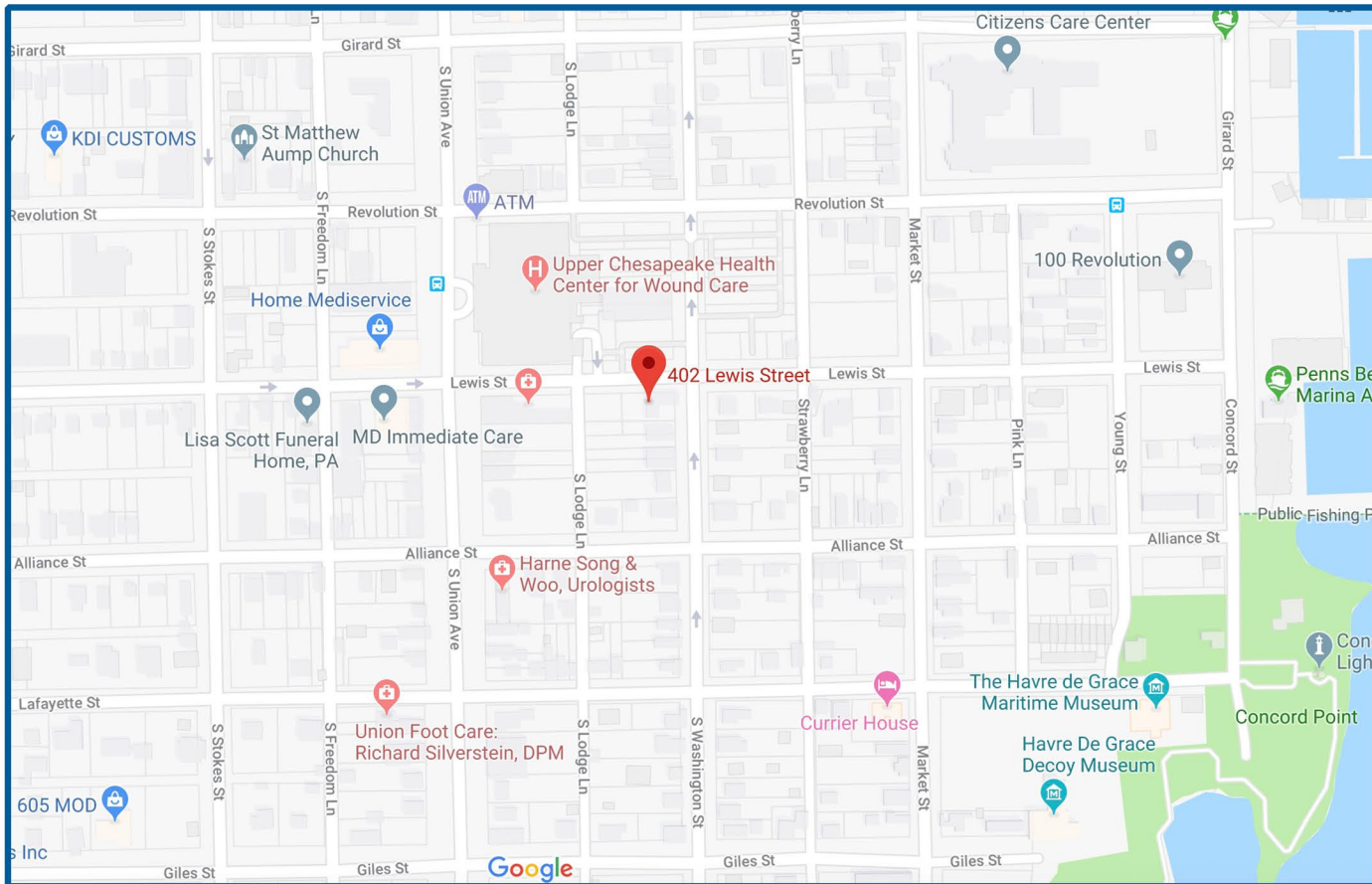
CecilSells.com
5 Bel Air South Pkwy, Suite 1467
Bel Air, MD 21015



COLDWELL BANKER
REALTY

HAVRE DE GRACE OFFICE SPACE

400 Lewis Street



Cecil Hill, Jr.
Chill@cbmove.com
D: 410.515.8275 O: 410.515.2000



CecilSells.com
5 Bel Air South Pkwy, Suite 1467
Bel Air, MD 21015

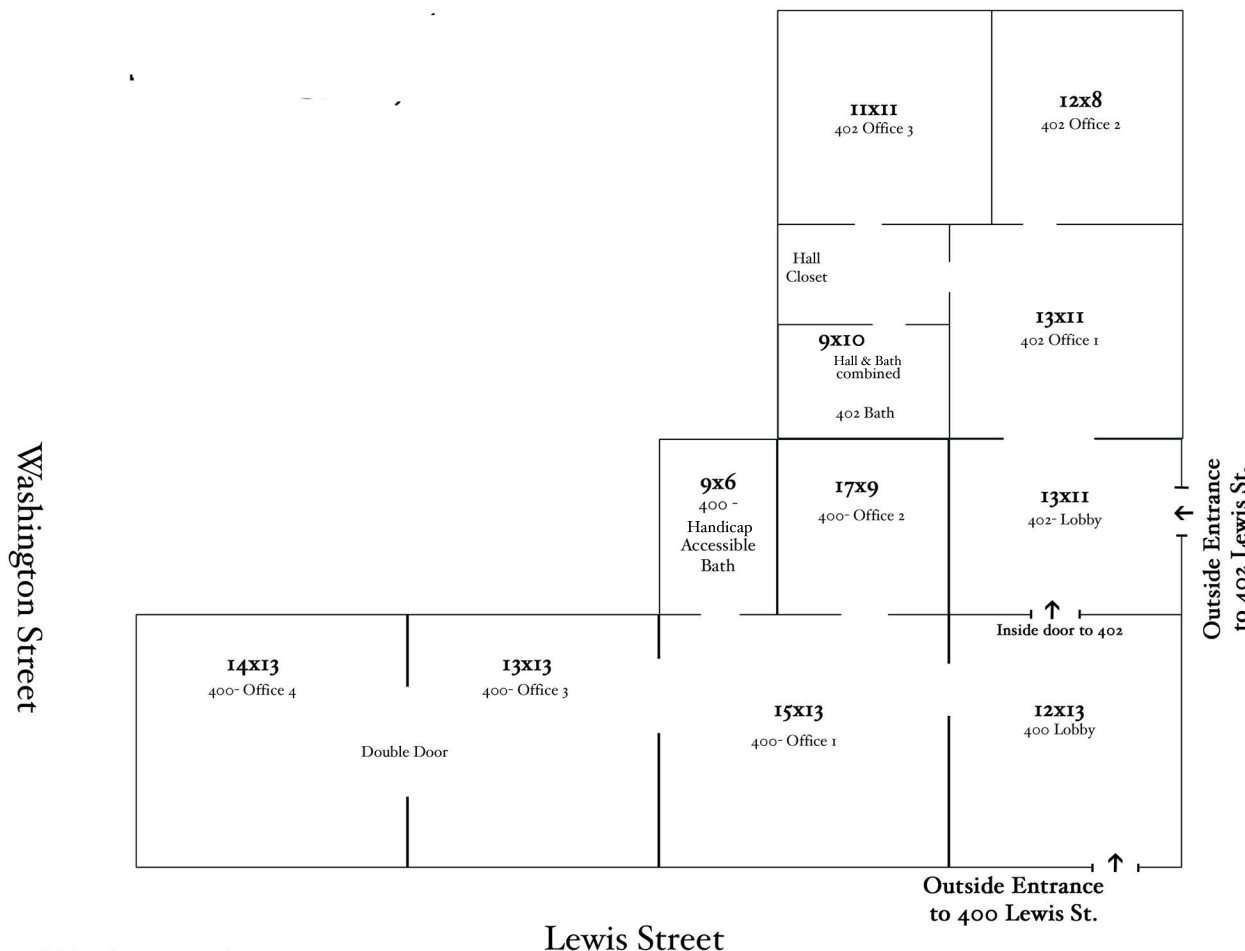


COLDWELL BANKER
REALTY



HAVRE DE GRACE OFFICE SPACE

400 Lewis Street



* Not drawn to scale

- First Floor Office Space
- Suite 400 Available: 1800SF
\$1900/month
- Parking Lot: 8 Spaces
- Zoning: RO
- Lots of Natural Light
- A few blocks from Waterfront
- Flexible Lease Terms



Cecil Hill, Jr.
Chill@cbmove.com
D: 410.515.8275 O: 410.515.2000



CecilSells.com
5 Bel Air South Pkwy, Suite 1467
Bel Air, MD 21015



COLDWELL BANKER
REALTY