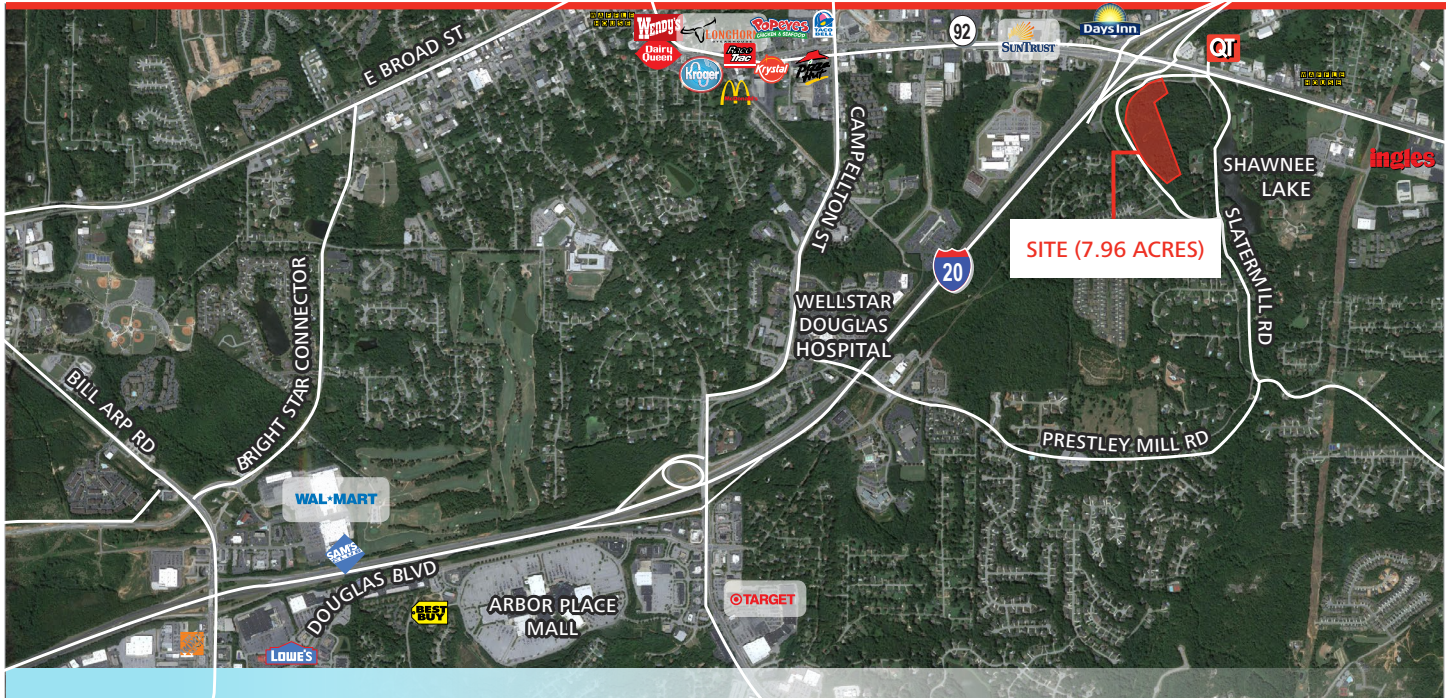


7.96± ACRES HIGHWAY 92 & INTERSTATE 20

Douglas County | Georgia

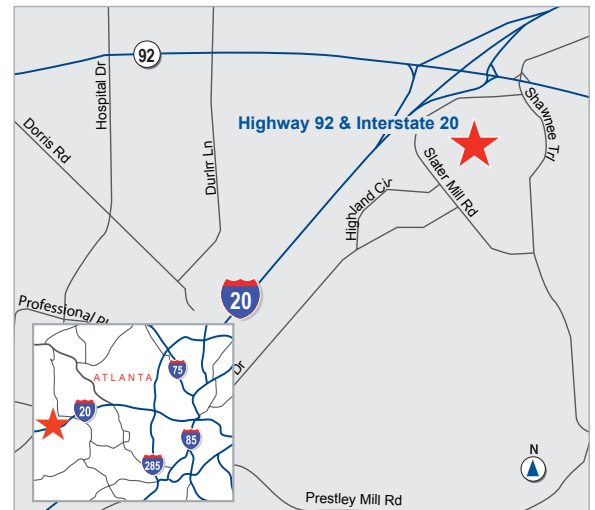


LAND FOR SALE

SITE	7.96± Acres
OFFERING PRICE	\$1,200,000 (\$150,753 per acre)

HIGHLIGHTS

- 1,780 feet of frontage on Slater Mill Road
- Located in the south-west corner of HWY 92 and I-20 in Douglasville, Georgia
- Zoning: General Commercial (Douglas County)
- Excellent Level Topography
- Superb visibility from Highway 92 & I-20
- Traffic counts:
 - I-20 (102,000 VPD)
 - Highway 92 (34,100 VPD)
- One exit east of Arbor Place Mall
- All utilities available



Ackerman & Co.

LARRY WOOD
770.913.3902
lwood@ackermanco.net



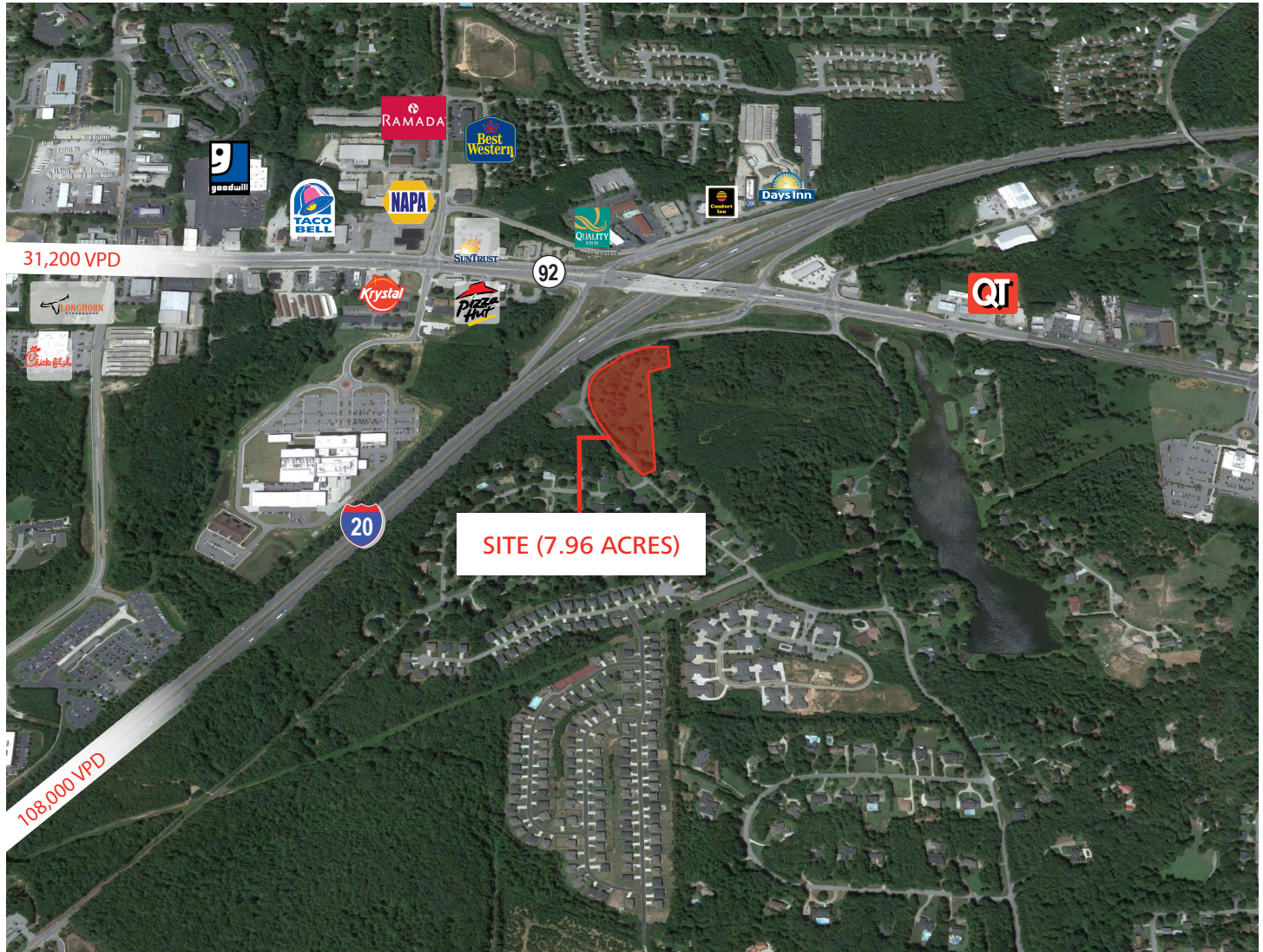
KYLE GABLE
404.867.3332
kgable@pioneerlandga.com

7.96± Acres Highway 92 & Interstate 20

Available For Sale

Douglas County
Georgia

AERIAL



DEMOGRAPHICS (2017)

	3 MILE	5 MILES	10 MILE
Population	41,388	97,781	307,183
Number of Households	14,361	34,124	108,411
Avg. Household Income	\$63,204	\$65,685	\$69,786
Median Household Income	\$53,678	\$57,765	\$60,364

Ackerman & Co.

LARRY WOOD
770.913.3902
lwood@ackermanco.net



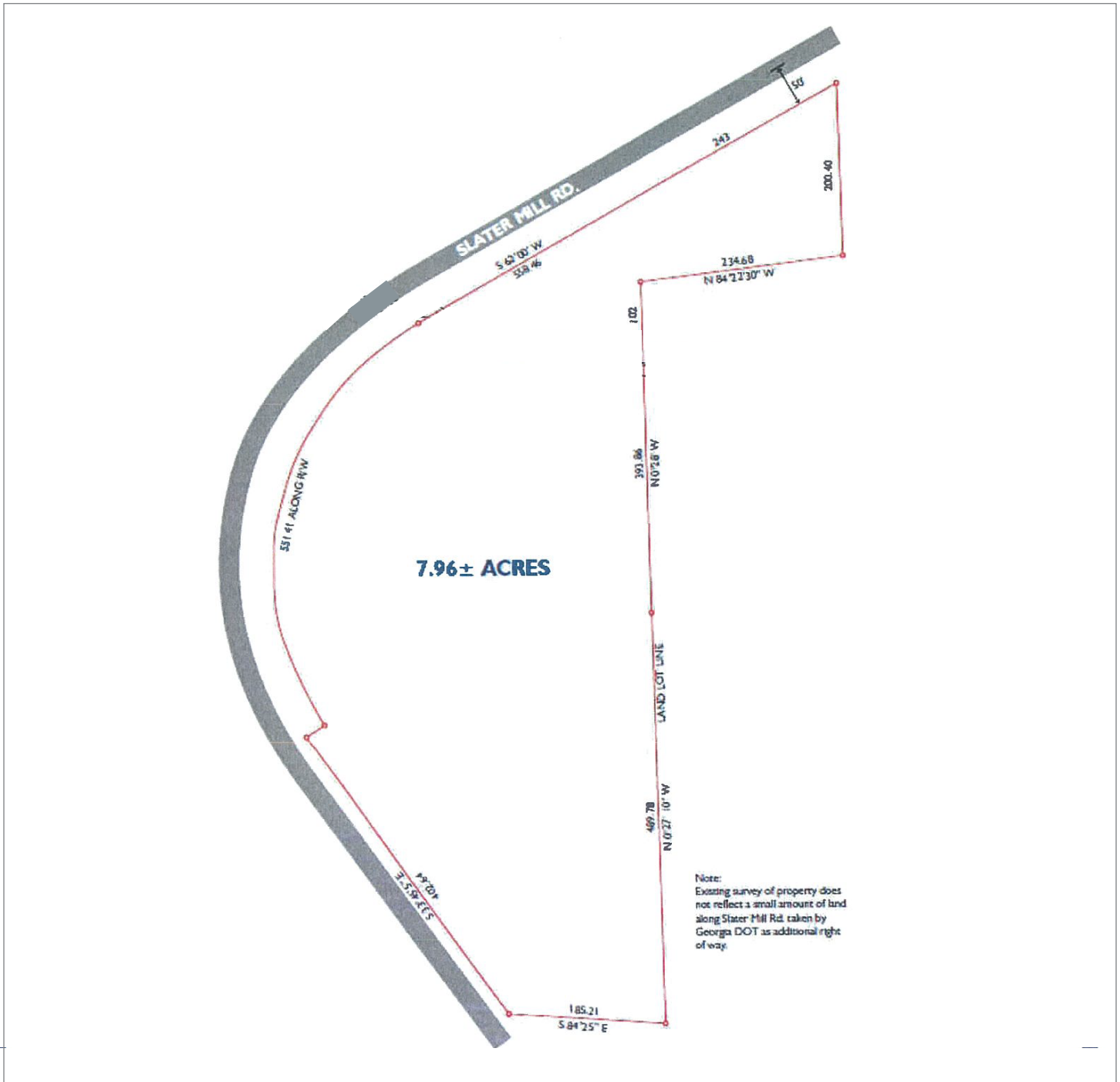
KYLE GABLE
404.867.3332
kgable@pioneerlandga.com

7.96± Acres Highway 92 & Interstate 20

Available For Sale

Douglas County
Georgia

SURVEY



Ackerman & Co.

LARRY WOOD
770.913.3902
lwood@ackermanco.net



KYLE GABLE
404.867.3332
kgable@pioneerlandga.com