

FOR LEASE

1228 S. Pleasantburg Drive Greenville, SC 29605

NAI Earle Furman



Retail or Office | 1,452 SF

- Currently set up as a turn-key salon suite
- Easily converted to creative office space
- Ample parking
- Located next to Millie Lewis School
- High traffic count corridor: $\pm 23,162$ vpd
- Centrally located
- Located 1 mile from I-85 and 4 miles from I-385
- Lease rate: \$16.50/SF Full Service

Demographics	1 Mile	3 Miles	5 Miles
Total Population:	5,275	43,018	124,333
Average HH Income:	\$72,717	\$72,680	\$60,174

No Warranty Or Representation, Express Or Implied, Is Made As To The Accuracy Of The Information Contained Herein, And The Same Is Submitted Subject To Errors, Omissions, Change Of Price, Rental Or Other Conditions, Prior Sale, Lease Or Financing, Or Withdrawal Without Notice, And Of Any Special Listing Conditions Imposed By Our Principals No Warranties Or Representations Are Made As To The Condition Of The Property Or Any Hazards Contained Therein Are Any To Be Implied.



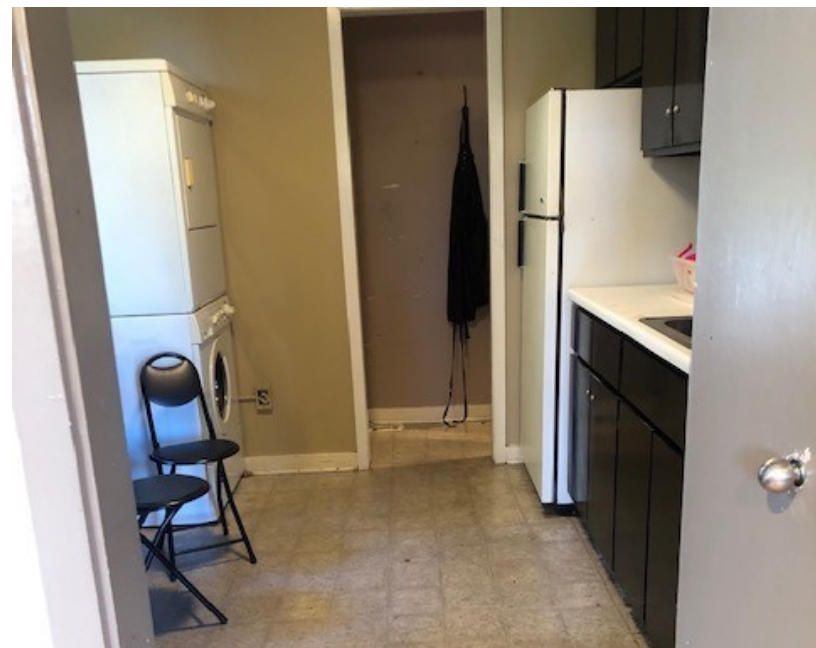
✉ **Shannon Caldwell**
O: +1 864 678 5998
C: +1 864 884 2280
scaldwell@naiearlefurman.com

No Warranty Or Representation, Express Or Implied, Is Made As To The Accuracy Of The Information Contained Herein, And The Same Is Submitted Subject To Errors, Omissions, Change Of Price, Rental Or Other Conditions, Prior Sale, Lease Or Financing, Or Withdrawal Without Notice, And Of Any Special Listing Conditions Imposed By Our Principals No Warranties Or Representations Are Made As To The Condition Of The Property Or Any Hazards Contained Therein Are Any To Be Implied.

📍 **101 E Washington St**
Greenville, SC 29601
naief.com

FOR LEASE

1228 S. Pleasantburg Drive Greenville, SC 29605



✉ **Shannon Caldwell**
O: +1 864 678 5998
C: +1 864 884 2280
scaldwell@naiearlefurman.com

No Warranty Or Representation, Express Or Implied, Is Made As To The Accuracy Of The Information Contained Herein. And The Same Is Submitted Subject To Errors, Omissions, Change Of Price, Rental Or Other Conditions, Prior Sale, Lease Or Financing, Or Withdrawal Without Notice, And Of Any Special Listing Conditions Imposed By Our Principals. No Warranties Or Representations Are Made As To The Condition Of The Property Or Any Hazards Contained Therein Are Any To Be Implied.

NAI Earle Furman

FOR LEASE

1228 S. Pleasantburg Drive Greenville, SC 29605

