

HARMON ROAD /
LAPEER ROAD
AUBURN HILLS, MICHIGAN

LAND FOR SALE
5.50 – 20.22 Acres Available



**SIGNATURE
ASSOCIATES**
KNOW SIGNATURE | KNOW RESULTS

MAIN ROAD FRONTAGE



PROPERTY FEATURES

- **Parcel 1:**
 - 14.72 acres
 - Excellent commercial potential with 1,185' frontage on Lapeer Road (M-24)
 - B-2 Zoning
 - Sale Price: \$3,815,160 (\$259,182/acre)
- **Parcel 2:**
 - 5.50 acres
 - Well located with main road exposure
 - One of the last I-2 zoned parcels in Auburn Hills
 - Sale Price: \$1,197,900 (\$217,800/acre)
- Can be purchased together for a total of 20.22 acres
- Total Sale Price: \$5,013,060 (\$247,925.82/acre)



For more information, please contact:

PAUL HOGE
(248) 948 0103
paulhoge@signatureassociates.com

STEVE GORDON
(248) 948 0101
sgordon@signatureassociates.com

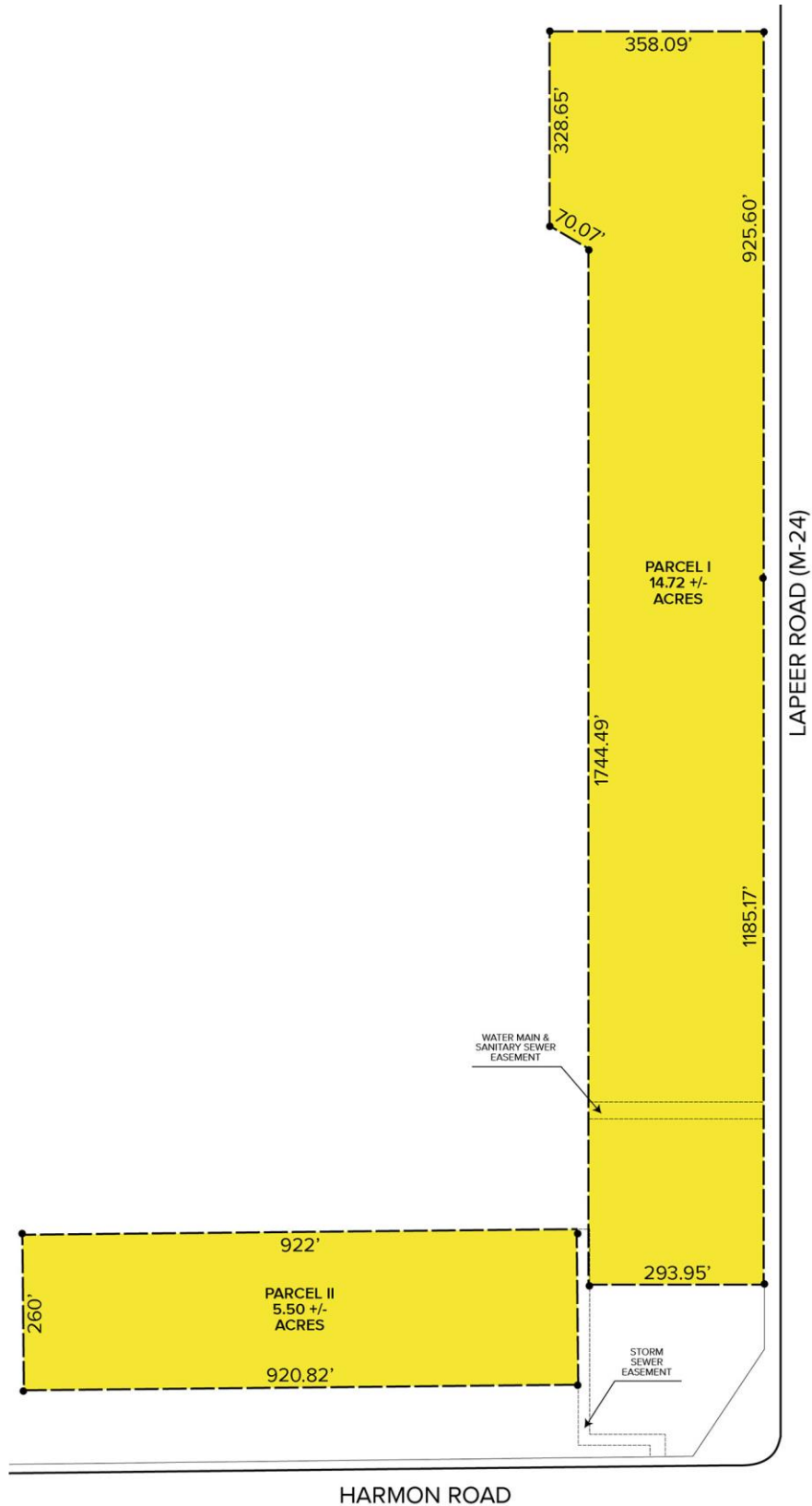
SIGNATURE ASSOCIATES
One Towne Square, Suite 1200
Southfield, MI 48076
www.signatureassociates.com

Harmon Road & Lapeer Road – Auburn Hills, MI

Land For Sale

5,50 – 20.22
Acres
AVAILABLE

Site Plan



For more information, please contact:

PAUL HOGE
(248) 948 0103

paulhoge@signatureassociates.com

STEVE GORDON
(248) 948 0101

sgordon@signatureassociates.com

SIGNATURE ASSOCIATES

One Towne Square, Suite 1200
Southfield, MI 48076

www.signatureassociates.com