

# ±29.56 ACRES FOR SALE

PINAL COUNTY, ARIZONA

**LOCATION** The Property is located west of the southwest corner of Earley Road and Arizola Road in Pinal County, Arizona

**SIZE** ±29.56 acres

**PRICE** \$15,000 per acre

**PARCELS** 505-30-010D

**ZONING** Agricultural

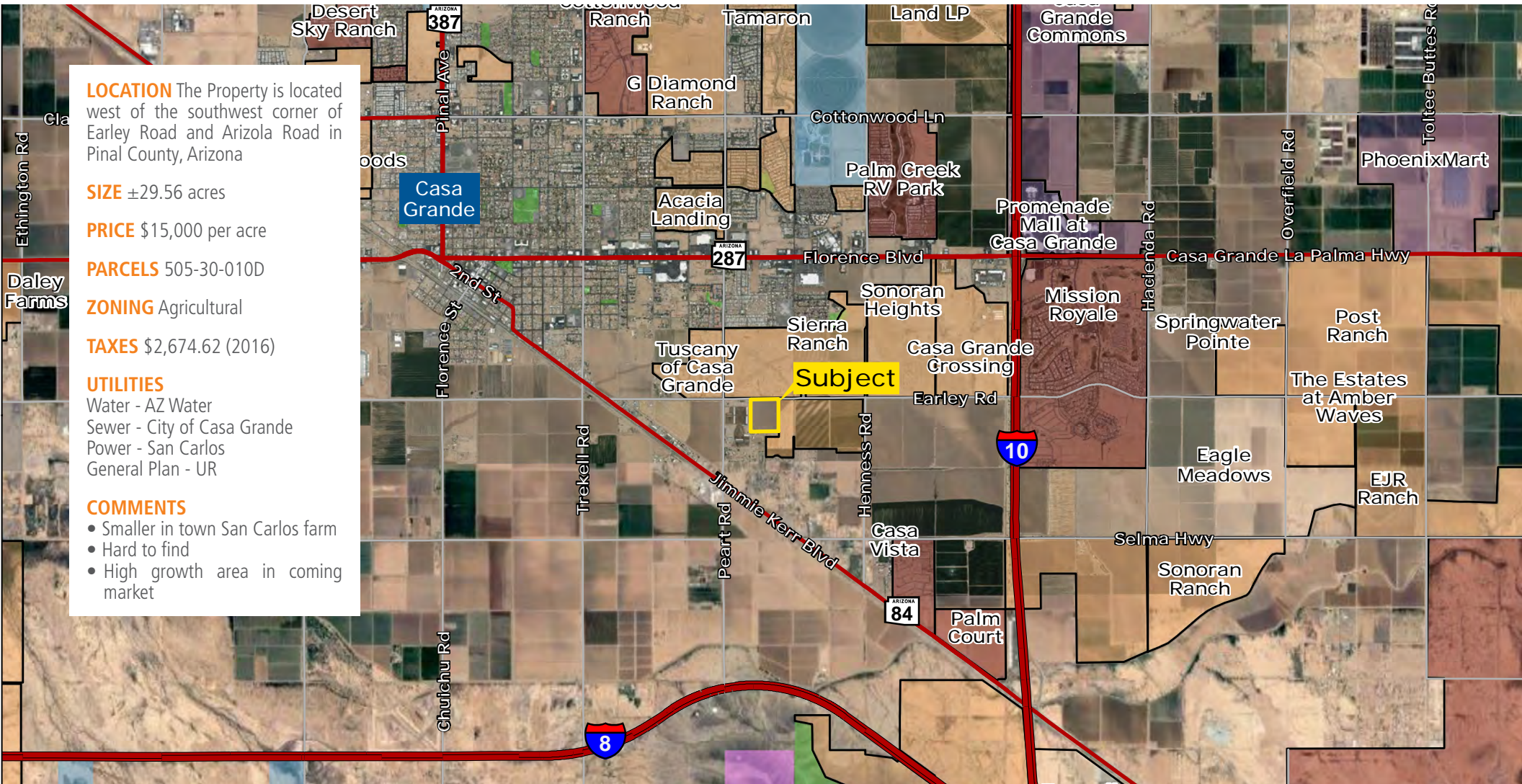
**TAXES** \$2,674.62 (2016)

**UTILITIES**

Water - AZ Water  
Sewer - City of Casa Grande  
Power - San Carlos  
General Plan - UR

**COMMENTS**

- Smaller in town San Carlos farm
- Hard to find
- High growth area in coming market



Kirk McCarville | [kmccarville@landadvisors.com](mailto:kmccarville@landadvisors.com)

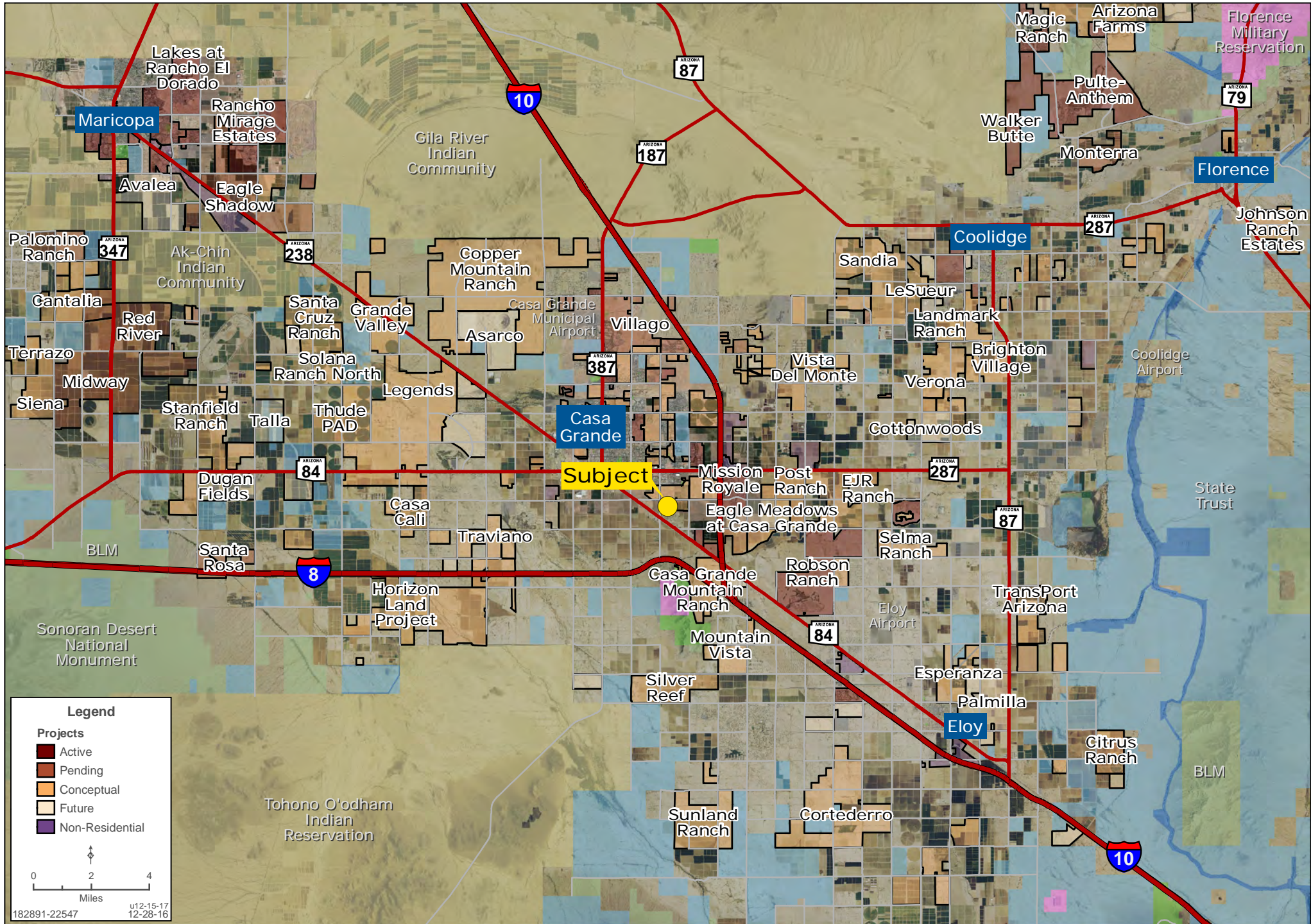
4900 North Scottsdale Road, Suite 3000, Scottsdale, Arizona 85251 ph. 480.483.8100 | [www.landadvisors.com](http://www.landadvisors.com)

The information contained herein is from sources deemed reliable. We have no reason to doubt its accuracy but do not guarantee it. It is the responsibility of the person reviewing this information to independently verify it. This package is subject to change, prior sale or complete withdrawal. AZPinal182891-12.18.17



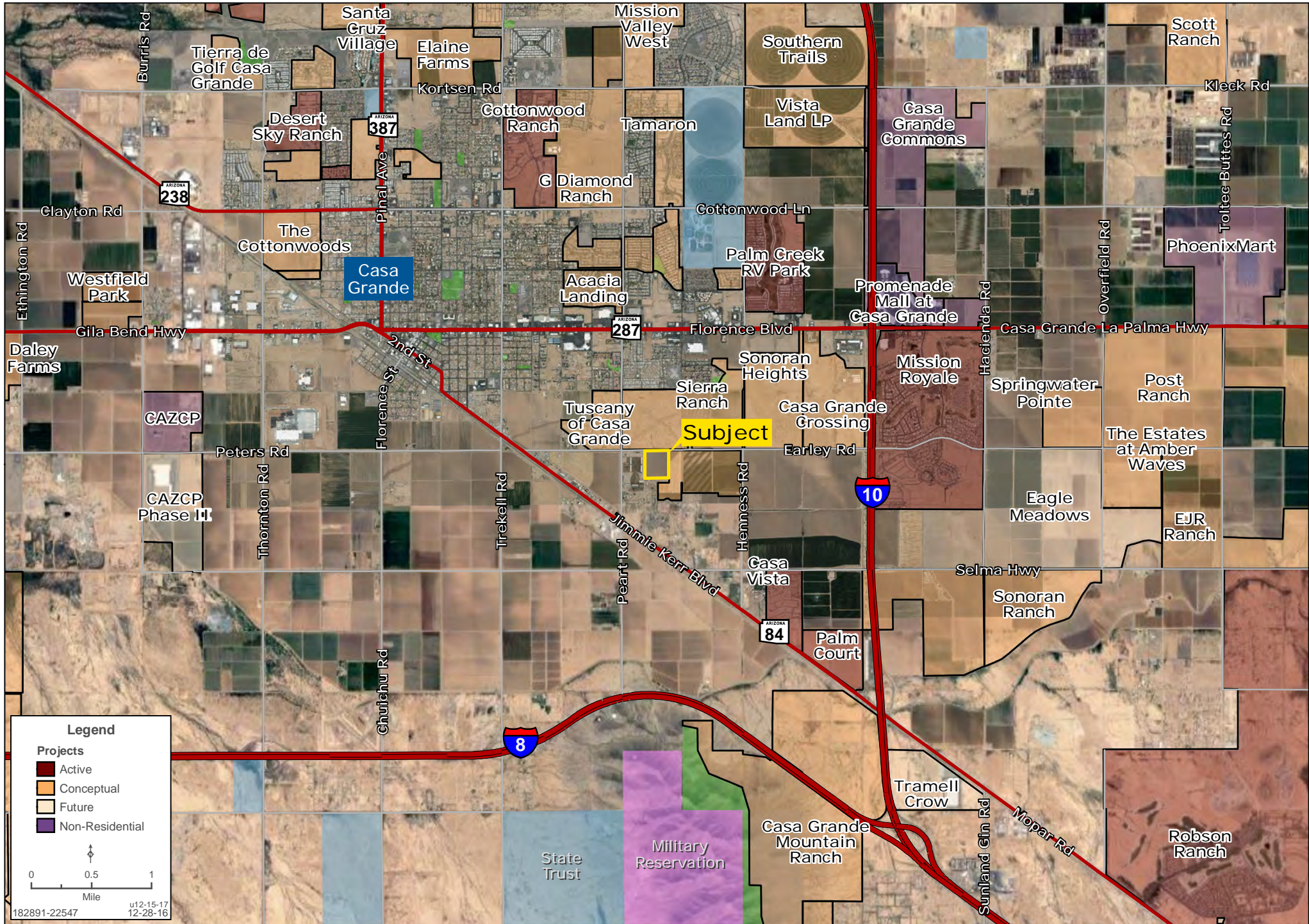
# REGIONAL MAP

Kirk McCarville | 480.483.8100 | www.landadvisors.com



# SURROUNDING DEVELOPMENT MAP

Kirk McCarville | 480.483.8100 | www.landadvisors.com



# PROPERTY DETAIL MAP

Kirk McCarville | 480.483.8100 | www.landadvisors.com

