

PRIME SITE READY TO DEVELOP

13 MILES TO
RICHMOND MARINE TERMINAL

WALTHALL
INTERCHANGE
EXIT 58

ENTERCHANGE AT
WALTHALL

RUFFIN MILL RD

Honeywell

INTERSTATE
95

R/L CARRIERS

Hillphoenix

SunChemical

Fiorucci

MELT

Marva Maid

TOUCHSTONE DR

FedEx
Freight

± 25 ACRES
AVAILABLE

WALTHALL INDUSTRIAL PKWY

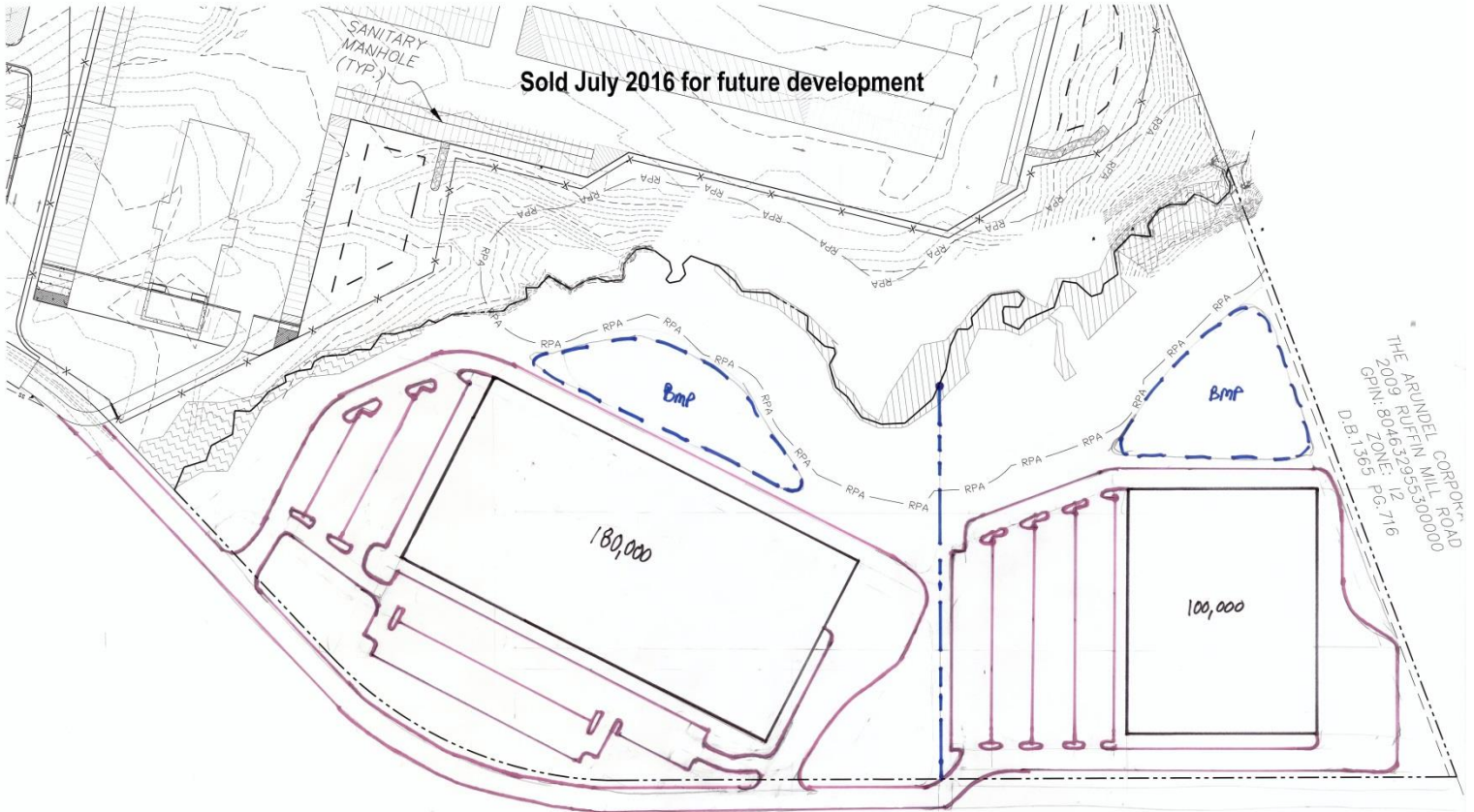
DSC
LOGISTICS AND
SUPPLY CHAIN MANAGEMENT

For more information, contact:

JEFF COOKE, SIOR
Senior Vice President
804 697 3459
jeff.cooke@thalhimer.com

GRAHAM STONEBURNER
Senior Associate
804 344 7159
graham.stoneburner@thalhimer.com

Thalhimer Center
11100 W. Broad Street
Glen Allen, VA 23060
www.thalhimer.com



Trial Site Plan for Illustration Only

Property Features

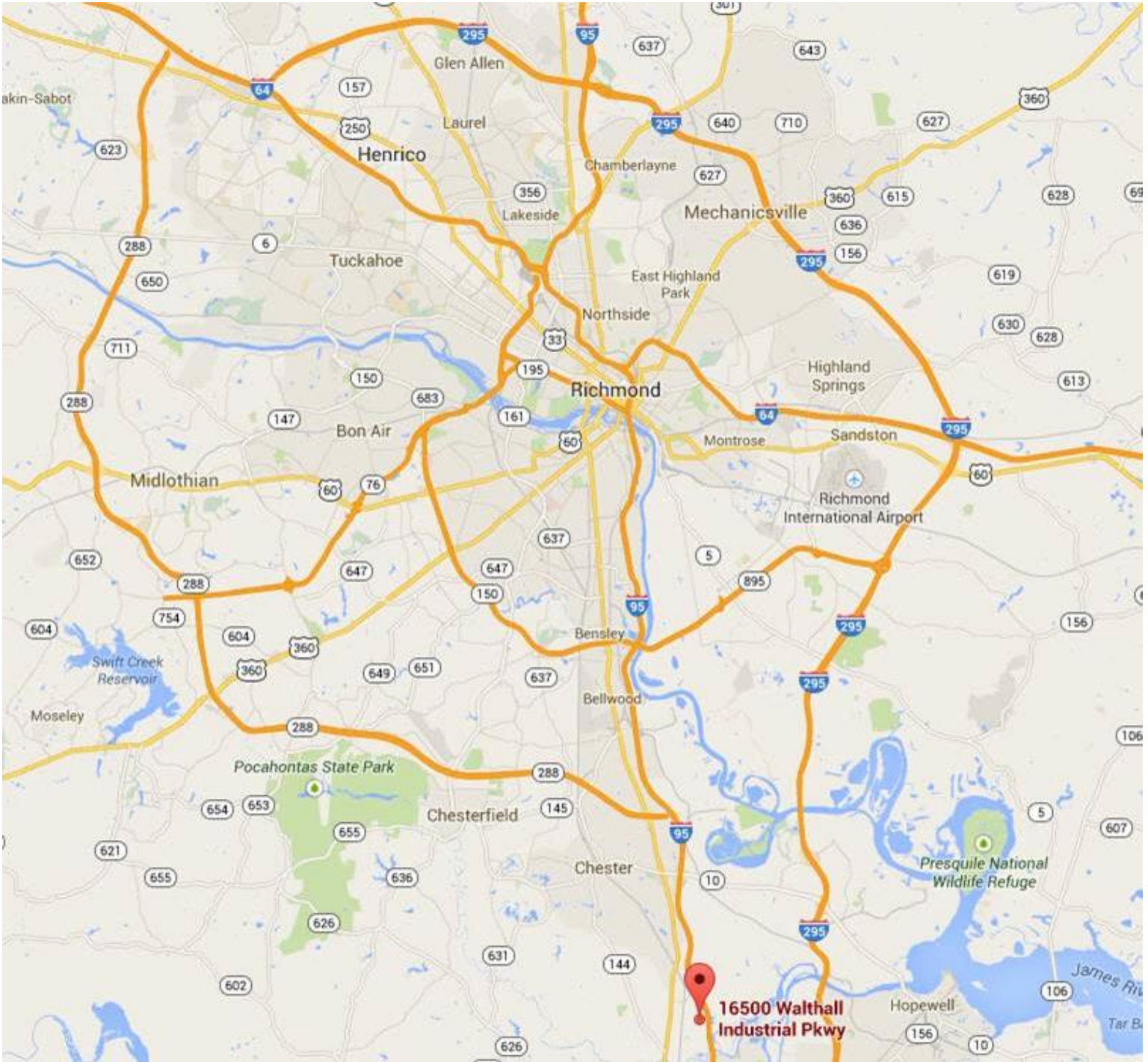
- ±25 Acres – Approximately 20 acres usable
- Zoned I-2 Industrial
- Located in a “Technology Zone”
www.chesterfieldbusiness.com
- Level topography, ready for development
- Road, water, sewer and gas on site
- Easy access to I-95, I-295, I-85 and Route 288
- 13 miles to Richmond Marine Terminal
- Price reduced for quick sale
- Call for quote

For more information, contact:

JEFF COOKE, SIOR
Senior Vice President
804 697 3459
jeff.cooke@thalhimer.com

GRAHAM STONEBURNER
Senior Associate
804 344 7159
graham.stoneburner@thalhimer.com

Thalhimer Center
11100 W. Broad Street
Glen Allen, VA 23060
www.thalhimer.com



For more information, contact:

JEFF COOKE, SIOR
Senior Vice President
804 697 3459
jeff.cooke@thalhimer.com

GRAHAM STONEBURNER
Senior Associate
804 344 7159
graham.stoneburner@thalhimer.com

Thalhimer Center
11100 W. Broad Street
Glen Allen, VA 23060
www.thalhimer.com