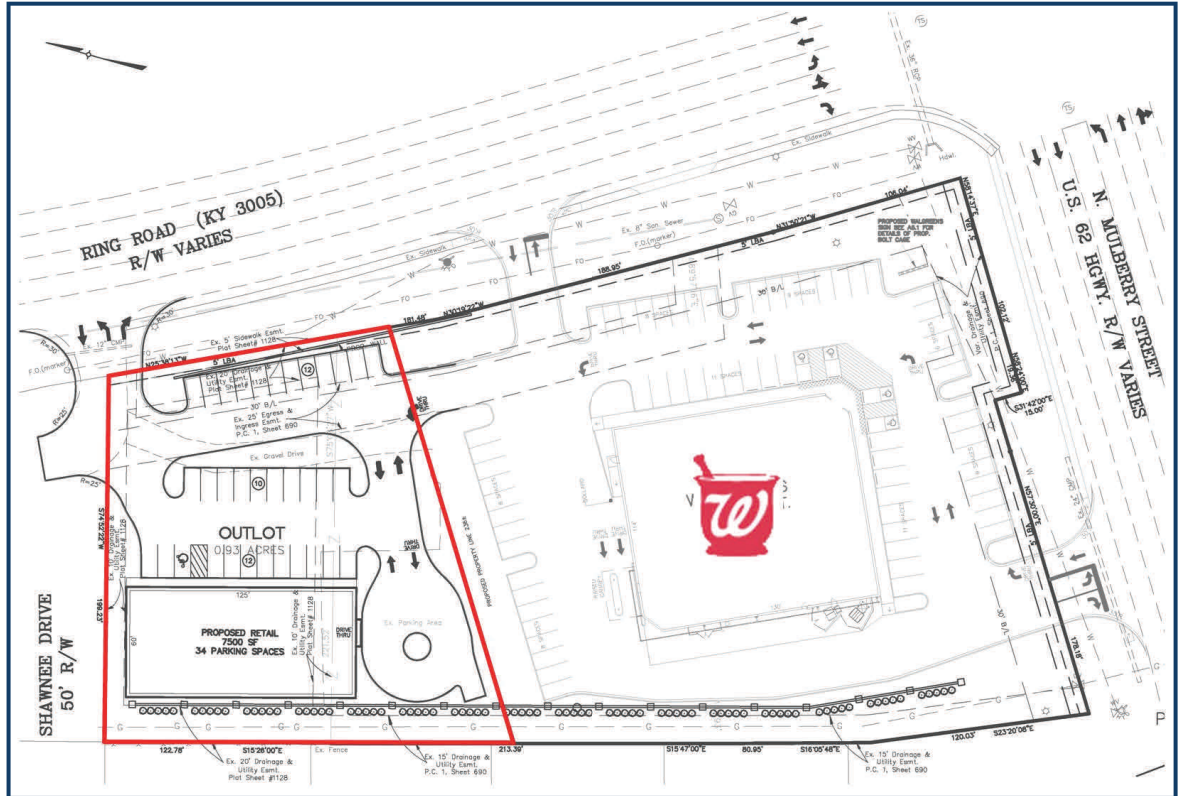
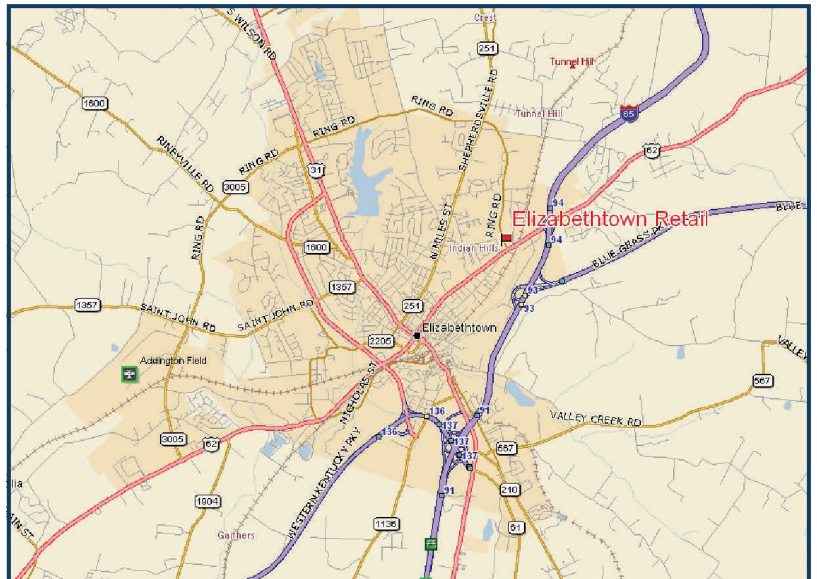


PROPOSED RETAIL DEVELOPMENT ELIZABETHTOWN, KENTUCKY



Property Highlights:

- ◆ Proposed 7,500 square feet retail development
- ◆ Ideal for retail, medical or office use
- ◆ Can accommodate drive-thru users
- ◆ Adjacent to Walgreens
- ◆ Excellent access via Ring Rd with access to Mulberry St
- ◆ Nearly 28,000 VPD on Mulberry and over 17,000 VPD on Ring Rd
- ◆ Convenient access to I-65



Call for more information (502) 426-1050

Demographics:	1 Mile	3 Mile	5 Mile
Population	4,436	25,546	41,578
Median HH Income	\$38,343	\$42,796	\$45,313

ELIZABETHTOWN, KY

