

FOR LEASE

THE HUNTINGTON NATIONAL BANK

900

LEE STREET EAST

Charleston, West Virginia 25301



PRIME OFFICE SPACE

Located in the business district of downtown Charleston

- + Competitive rental rates
- + 24 Hour Security
- + Great office layouts
- + Updated elevators
- + On bus route
- + Easy access to I-79, I-77 & I-64
- + Downtown amenities
- + Main floor lobby directory
- + Onsite full service bank with ATM
- + Covered parking garage with direct access to building

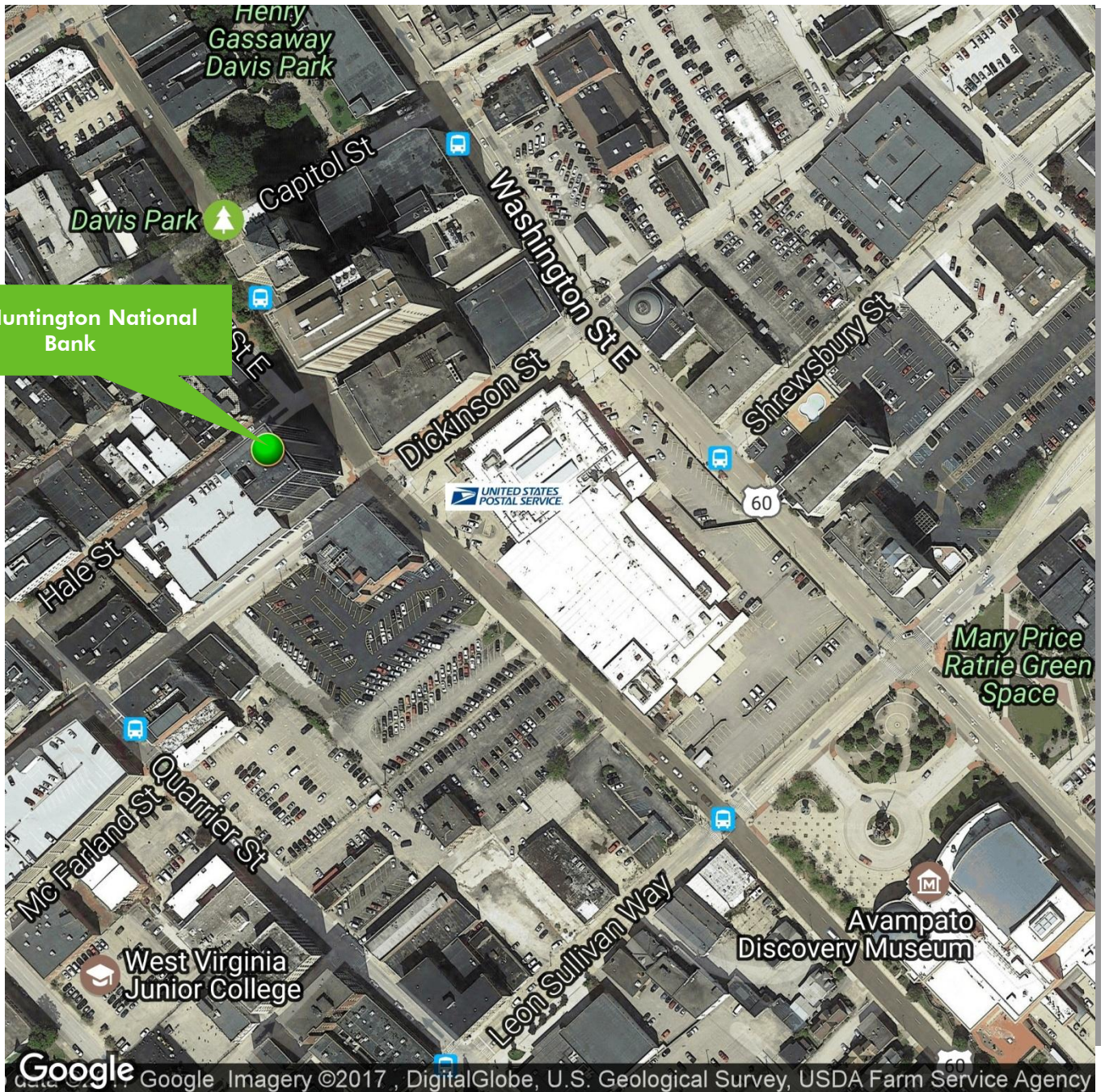


www.cbre.us/charlestonwv

CBRE

FOR LEASE

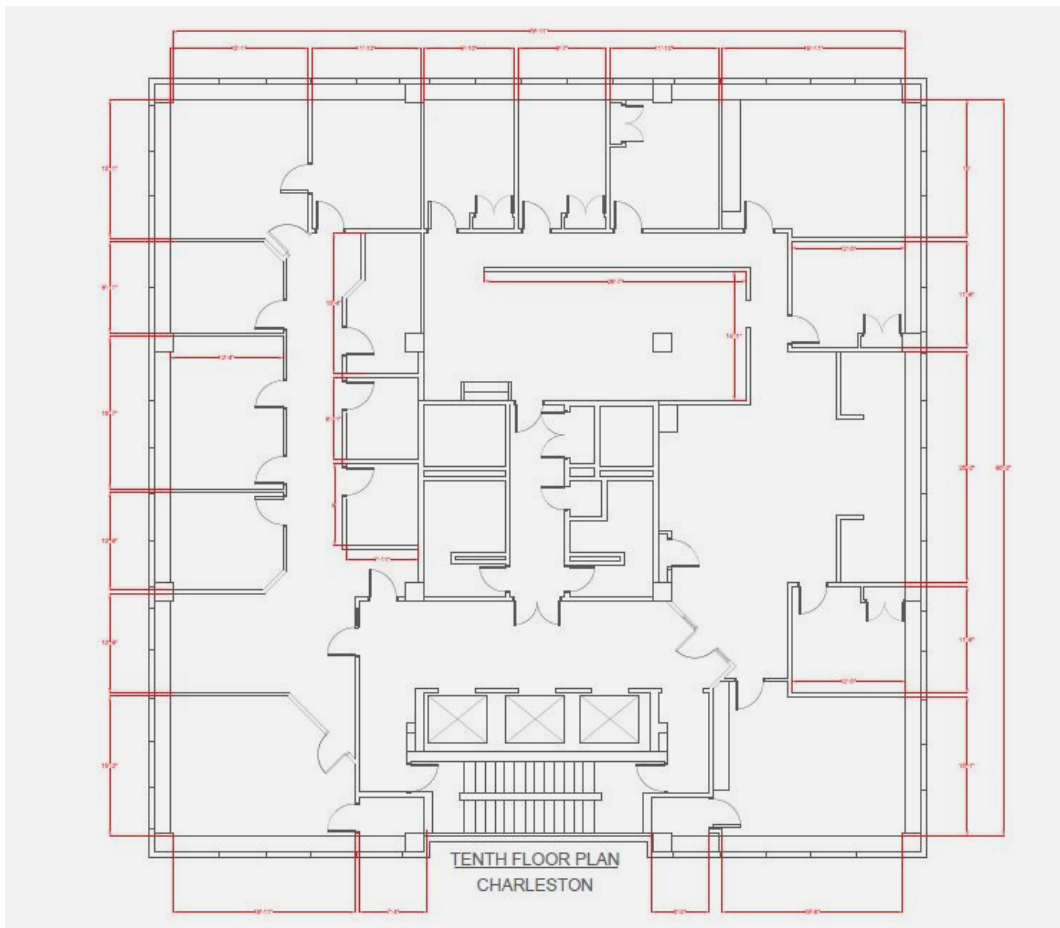
THE HUNTINGTON NATIONAL BANK



| FLOORS AVAILABLE | SQUARE FEET | LEASE RATES |
|---|-------------------|-------------|
| LOWER LEVEL | 994 RSF | \$18.00/SF |
| 4 th Thru 8 th FLOORS | 6,545 -32,725 RSF | |
| 9TH FLOOR | 891 RSF | |
| 12TH FLOOR | 985 RSF | |
| 14 TH FLOOR | 6,545 RSF | |

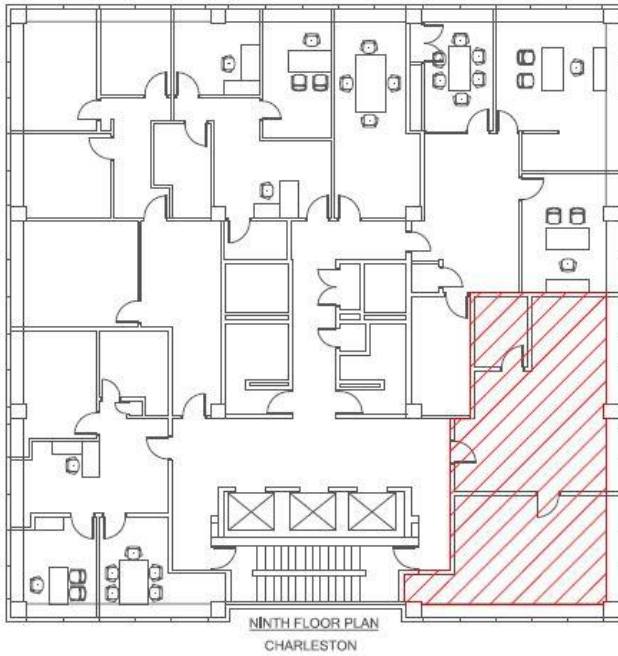


Typical Floor Plan-(Full Floor)- 6,545 RSF

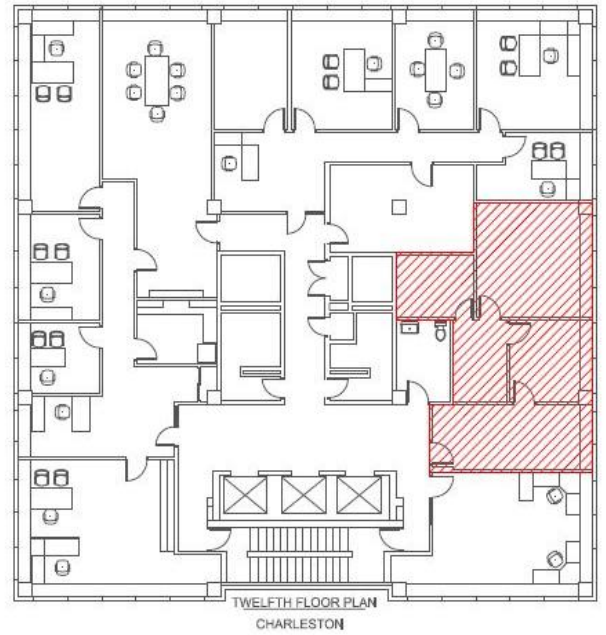




9th Floor Plan- 891 RSF



12th Floor Plan- 985 RSF



14th Floor View



FOR LEASE

HUNTINGTON NATIONAL BANK

900

LEE STREET EAST
Charleston, WV 25301



DEMOGRAPHICS

| 2017 Demographics | 1 MILE | 3 MILES | 5 MILES |
|--------------------------|----------|----------|----------|
| POPULATION | 7,978 | 43,951 | 65,934 |
| HOUSEHOLDS | 4,248 | 20,357 | 30,390 |
| AVERAGE HOUSEHOLD INCOME | \$52,887 | \$72,522 | \$72,548 |
| BUSINESSES | 1,935 | 3,288 | 4,489 |



CONTACT US

DEWITT BLUNDON

Senior Associate
+1 304 546 2581
dewitt.blundon@cbre.com



© 2016 CBRE, Inc. This information has been obtained from sources believed reliable. We have not verified it and make no guarantee, warranty or representation about it. Any projections, opinions, assumptions or estimates used are for example only and do not represent the current or future performance of the property. You and your advisors should conduct a careful, independent investigation of the property to determine to your satisfaction the suitability of the property for your needs. Photos herein are the property of their respective owners and use of these images without the express written consent of the owner is prohibited. CBRE and the CBRE logo are service marks of CBRE, Inc. and/or its affiliated or related companies in the United States and other countries. All other marks displayed on this document are the property of their respective owners.

www.cbre.us/charlestonwv

CBRE