



FOR SUBLEASE

# 17300 N Dallas Pkwy - Suite 1010

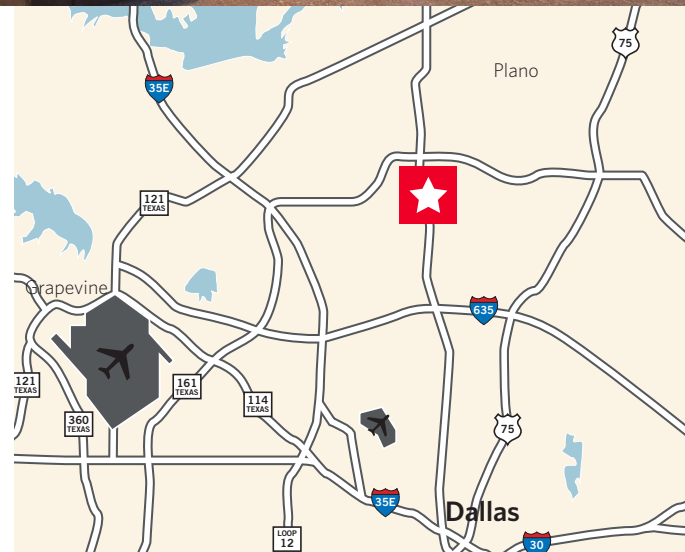
17300 N Dallas Pkwy / Dallas, Texas



## 14,478 RSF Office Space

### Property Highlights

- Rental Rate - \$17.00 + Electric
- Term Expires - May 31, 2017
- Availability - Immediately
- FF&E negotiable
- Space - High end finishes in reception, conference room and break room. Balanced mixture of private offices and workstations
- Parking - 4:1,000
- Golf Course Views
- On-site Conference Facilities
- On-Site Management and Maintenance



#### Travis Boothe

Associate Vice President  
+1 972 692 1731  
travis.boothe@cushwake.com

#### Craig Wilson

Executive Managing Director  
+1 972 692 1732  
craig.wilson@cushwake.com

#### Dan Harris

Vice President  
+1 972 692 1736  
dan.harrisr@cushwake.com

2101 Cedar Springs Road, Suite 900  
Dallas, Texas 75201  
main +1 972 663 9630  
fax +1 972 663 9955  
[cushmanwakefield.com](http://cushmanwakefield.com)



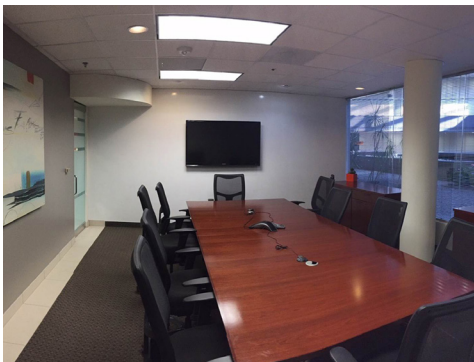
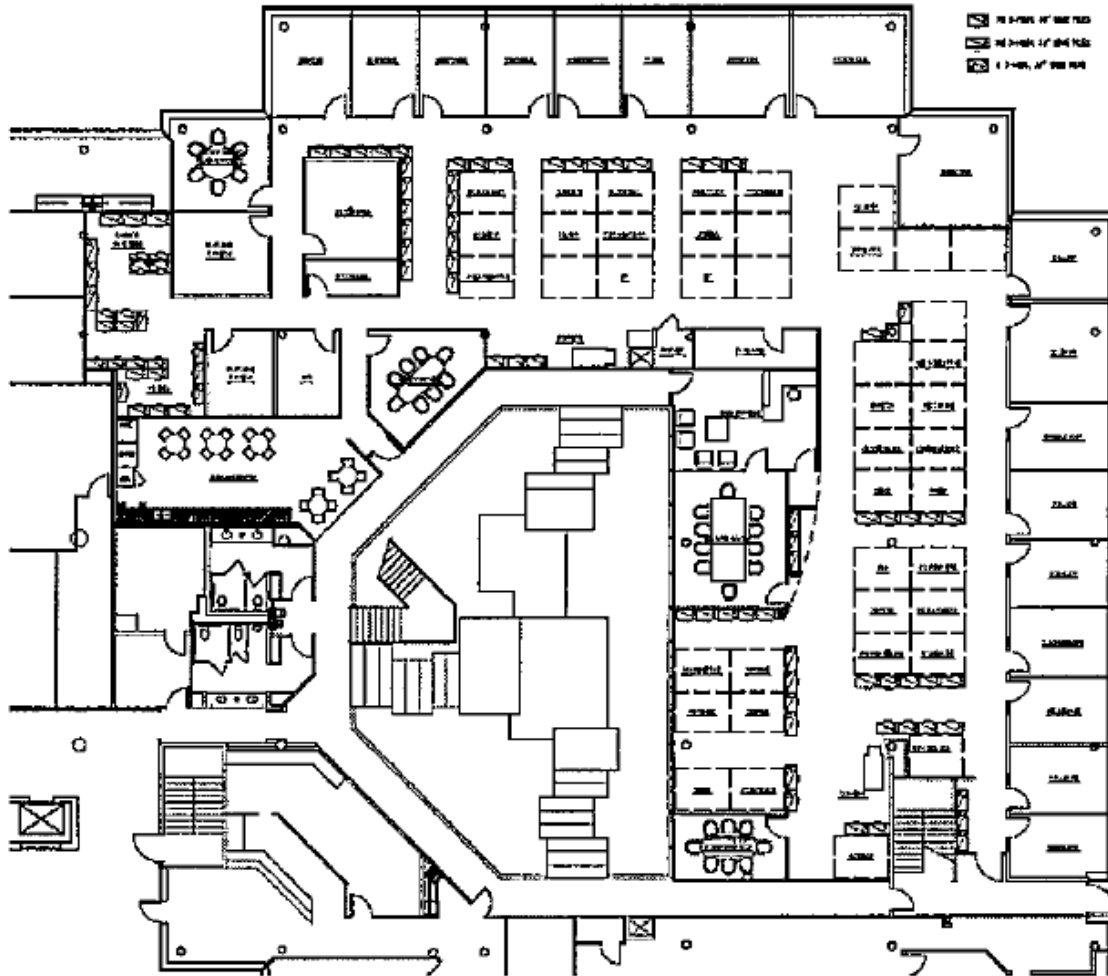
**CUSHMAN &  
WAKEFIELD**

FOR SUBLEASE

**17300 N Dallas Pkwy - Suite 1010**

17300 N Dallas Pkwy / Dallas, Texas

**Floor Plan**



**Travis Boothe**  
Associate Vice President  
+1 972 692 1731  
travis.boothe@cushwake.com

**Craig Wilson**  
Executive Managing Director  
+1 972 692 1732  
craig.wilson@cushwake.com

**Dan Harris**  
Vice President  
+1 972 692 1736  
dan.harrisr@cushwake.com

2101 Cedar Springs Road, Suite 900  
Dallas, Texas 75201  
main +1 972 663 9630  
fax +1 972 663 9955  
**cushmanwakefield.com**