

# 1267

## FOREST AVENUE

ELM PARK, STATEN ISLAND

Between Jewett Avenue  
and Hamlin Place

### APPROXIMATE SIZE

2,000 - 8,000 SF + Parking

### ASKING RENT

Upon Request

### FRONTAGE

200 FT

### COMMENTS

- Visible Corner Location
- Busy Retail Strip
- Built-out as CKO Kingboxing
- High Ceillings
- Many Windows and Natural Light
- Owner Will Build-to-Suit
- Large Signage Opportunity
- 45 Spot Parking Lot

### NEIGHBORS

Verizon • 7-11 • Taco Bell • Walgreens • Allstate  
• Metro PC • Dunkin' • Stop & Shop • Auto Zone  
• Subway • Popeyes • Laundry Express • Chase  
Bank • Forest Avenue Shoppers Town - Target/  
TJMaxx/LA Fitness/PetSmart/KFC/CVS

### TRANSPORTATION

BUS: S48, S66, S98, SIM30, SIM35  
Highway: Dr. MLK Jr. Expressway

### TERM

Negotiable

### POSSESSION

Immediate

2ND FLOOR RETAIL/OFFICE FOR LEASE



JAMES FAMULARO  
President

JOSEPH E. HARARY  
Associate  
jh@meridiancapital.com  
212.468.5978

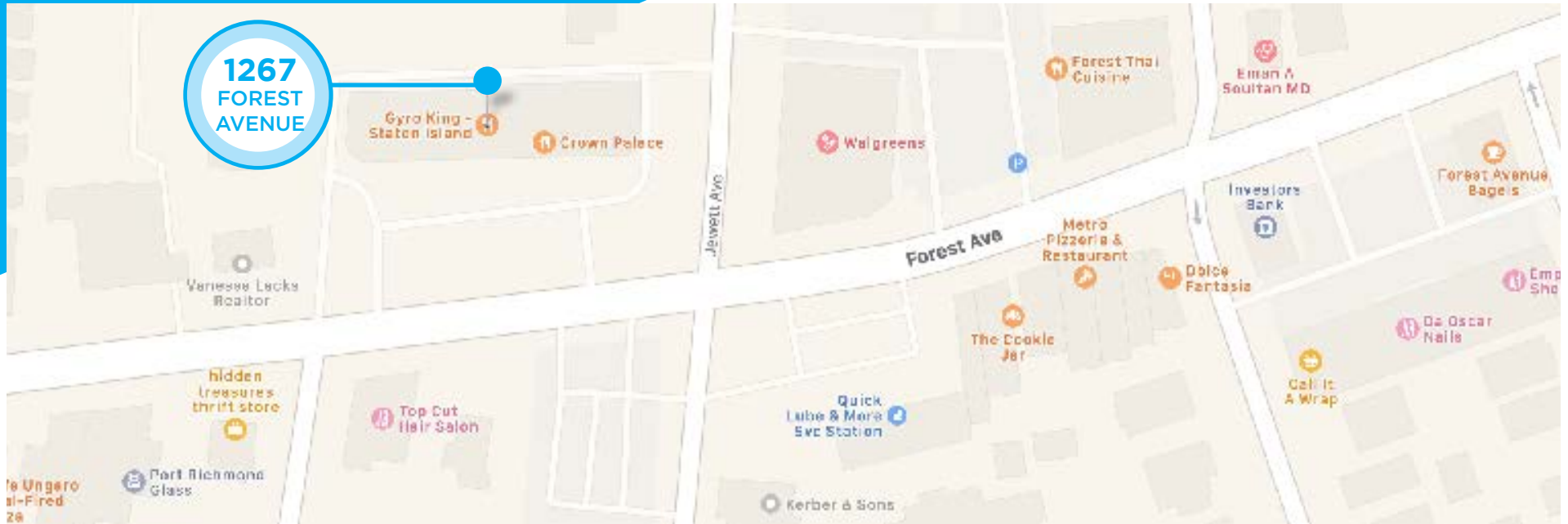


All information supplied is from sources deemed reliable and is furnished subject to errors, omissions, modifications, removal of the listing from sale or lease, and to any listing conditions, including the rates and manner of payment of commissions for particular offerings imposed by Meridian Capital Group. This information may include estimates and projections prepared by Meridian Capital Group with respect to future events, and these future events may or may not actually occur. Such estimates and projections reflect various assumptions concerning anticipated results. While Meridian Capital Group believes these assumptions are reasonable, there can be no assurance that any of these estimates and projections will be correct. Therefore, actual results may vary materially from these estimates and projections. Any square footage dimensions set forth are approximate.

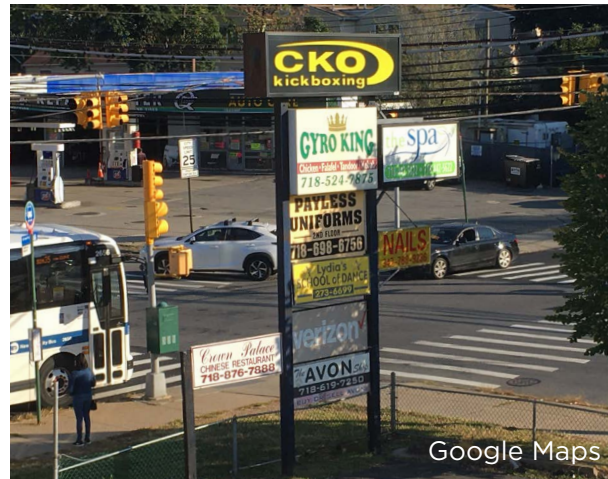
# 1267 FOREST AVENUE

ELM PARK, STATEN ISLAND | Between Jewett Avenue and Hamlin Place

RETAIL FOR LEASE



YOUR NEIGHBORHOOD



JAMES FAMULARO  
President

JOSEPH E. HARARY  
Associate  
jh@meridiancapital.com  
212.468.5978



All information supplied is from sources deemed reliable and is furnished subject to errors, omissions, modifications, removal of the listing from sale or lease, and to any listing conditions, including the rates and manner of payment of commissions for particular offerings imposed by Meridian Capital Group. This information may include estimates and projections prepared by Meridian Capital Group with respect to future events, and these future events may or may not actually occur. Such estimates and projections reflect various assumptions concerning anticipated results. While Meridian Capital Group believes these assumptions are reasonable, there can be no assurance that any of these estimates and projections will be correct. Therefore, actual results may vary materially from these estimates and projections. Any square footage dimensions set forth are approximate.