



Property Highlights

- Class A office building
- Four stories - 79,487 sf
- Convenient Central Broward County location
- Walking distance to hotels, restaurants, and banking
- High-end finishes
- Impact glass
- Abundant parking ratio of 4.0/1,000 sf

Greg Martin, Principal
D 954 903 3900
greg.martin@avisonyoung.com

Justin Cope, Principal
D 954 903 3701
justin.cope@avisonyoung.com

Lisa Blumer, Senior Associate
D 954 903 3703
lisa.blumer@avisonyoung.com

500 W Cypress Creek Road
Suite 550
Fort Lauderdale, FL 33309



Available Suites

- Suite 130: 3,296 sf *
** Available 11/1/2020*
- Suite 300: 7,582 sf [View Suite Video](#)
- Suite 305: 3,048 sf *
** Available 1/1/2021*

Rental Rate

- \$25.50 NNN

Operating Expenses

- \$12.24

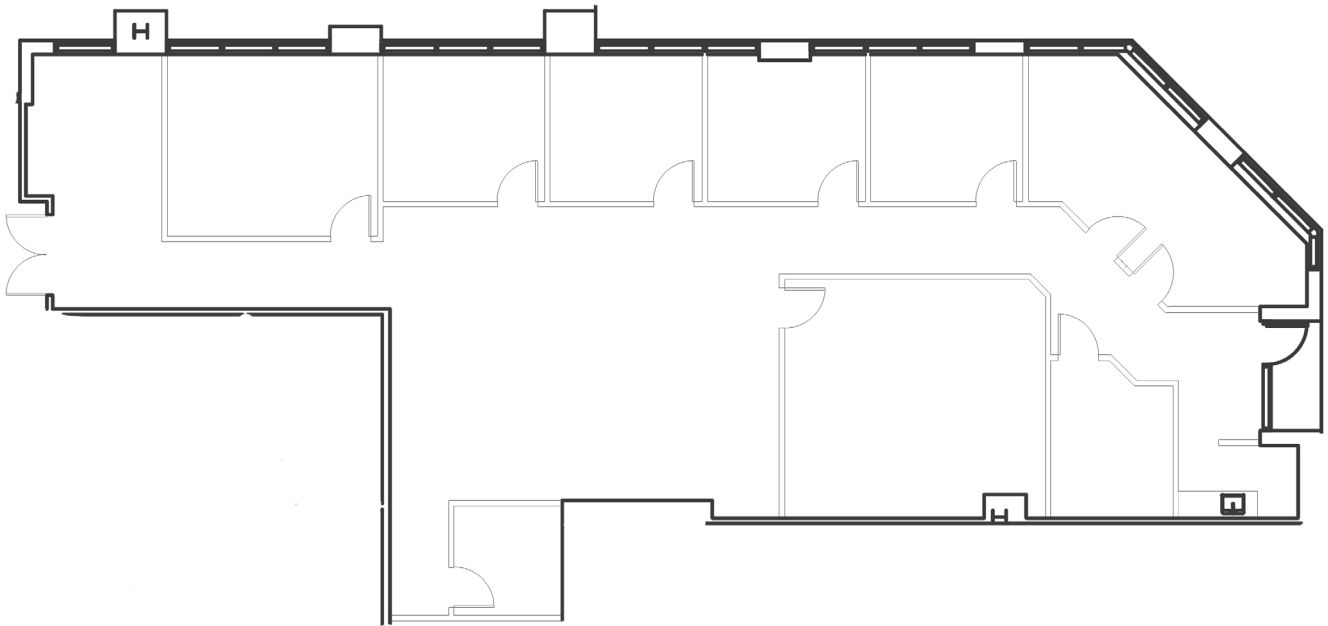
Greg Martin, Principal
D 954 903 3900
greg.martin@avisonyoung.com

Justin Cope, Principal
D 954 903 3701
justin.cope@avisonyoung.com

Lisa Blumer, Senior Associate
D 954 903 3703
lisa.blumer@avisonyoung.com

500 W Cypress Creek Road
Suite 550
Fort Lauderdale, FL 33309

Suite 130 - 3,296 sf
Available 11/1/2020



Greg Martin, Principal
D 954 903 3900
greg.martin@avisonyoung.com

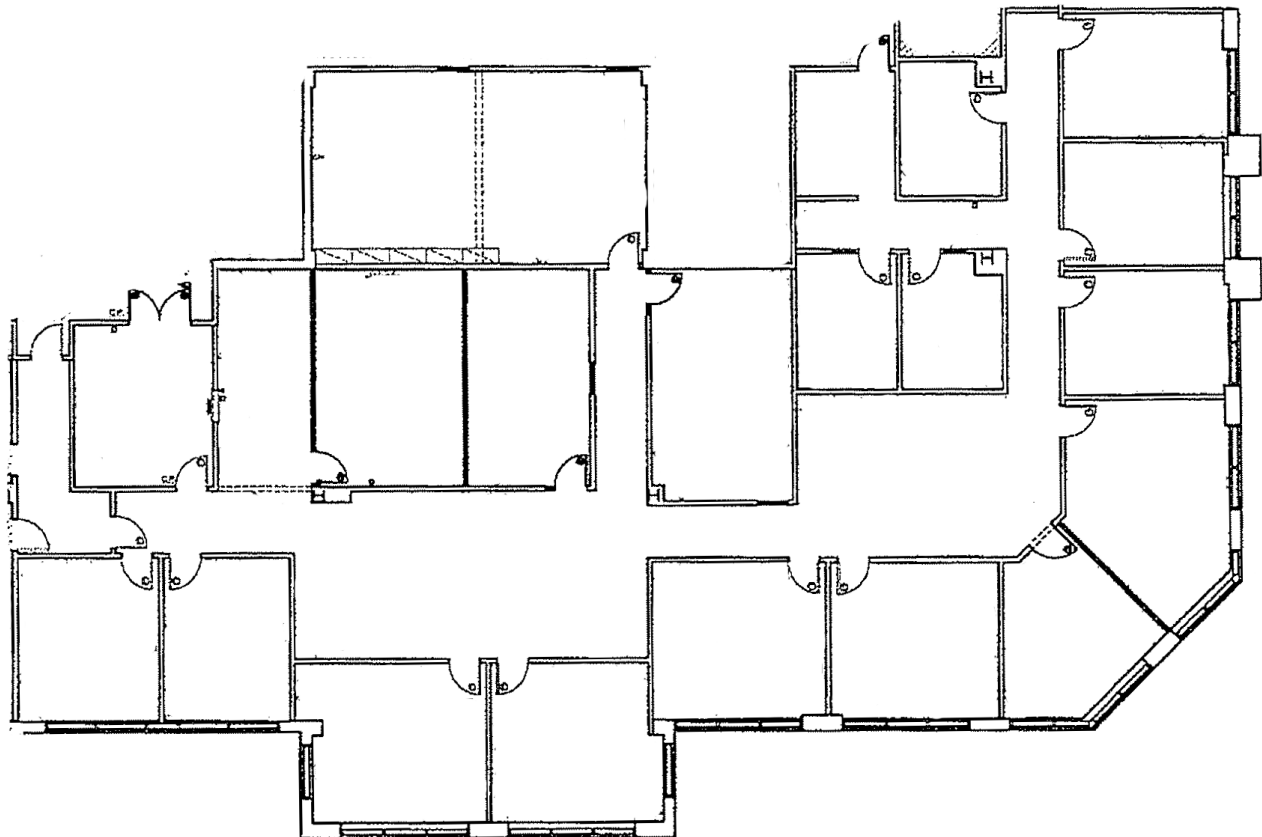
Justin Cope, Principal
D 954 903 3701
justin.cope@avisonyoung.com

Lisa Blumer, Senior Associate
D 954 903 3703
lisa.blumer@avisonyoung.com

500 W Cypress Creek Road
Suite 550
Fort Lauderdale, FL 33309

Suite 300 - 7,582 sf

[View Suite Video](#)



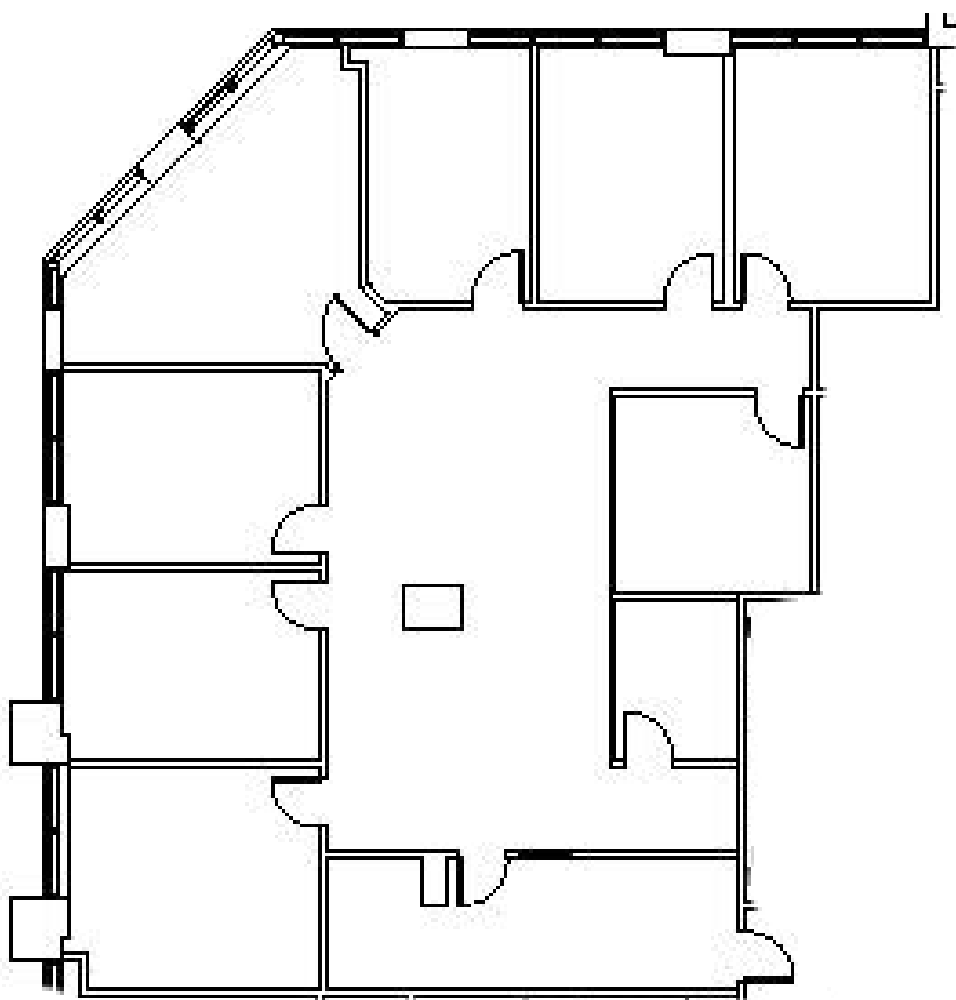
Greg Martin, Principal
D 954 903 3900
greg.martin@avisonyoung.com

Justin Cope, Principal
D 954 903 3701
justin.cope@avisonyoung.com

Lisa Blumer, Senior Associate
D 954 903 3703
lisa.blumer@avisonyoung.com

500 W Cypress Creek Road
Suite 550
Fort Lauderdale, FL 33309

Suite 305 - 3,048 sf
Available 1/1/2021



Greg Martin, Principal
D 954 903 3900
greg.martin@avisonyoung.com

Justin Cope, Principal
D 954 903 3701
justin.cope@avisonyoung.com

Lisa Blumer, Senior Associate
D 954 903 3703
lisa.blumer@avisonyoung.com

500 W Cypress Creek Road
Suite 550
Fort Lauderdale, FL 33309

Property Location



RESTAURANTS

- 1 J Alexander's
- 2 Dunkin' Donuts
- 3 Azteca Mexican
- 4 Bokampers
- 5 First Watch
- 6 Panera
- 7 Outback
- 8 Friday's

MISCELLANEOUS

- 1 Westfield Broward Mall
- 2 Target
- 3 The Fountains - Plantation
- 4 Publix
- 5 Fedex Print & Ship
- 6 Bank of America
- 7 Wells Fargo
- 8 Tower Shops
- 9 Plantation Preserve Golf Course & Club

Greg Martin, Principal
D 954 903 3900
greg.martin@avisonyoung.com

Justin Cope, Principal
D 954 903 3701
justin.cope@avisonyoung.com

Lisa Blumer, Senior Associate
D 954 903 3703
lisa.blumer@avisonyoung.com

500 W Cypress Creek Road
Suite 550
Fort Lauderdale, FL 33309