

FOR LEASE

# OLD TOWN PROFESSIONAL BUILDING

2215 N 30th Street / Tacoma, WA 98403

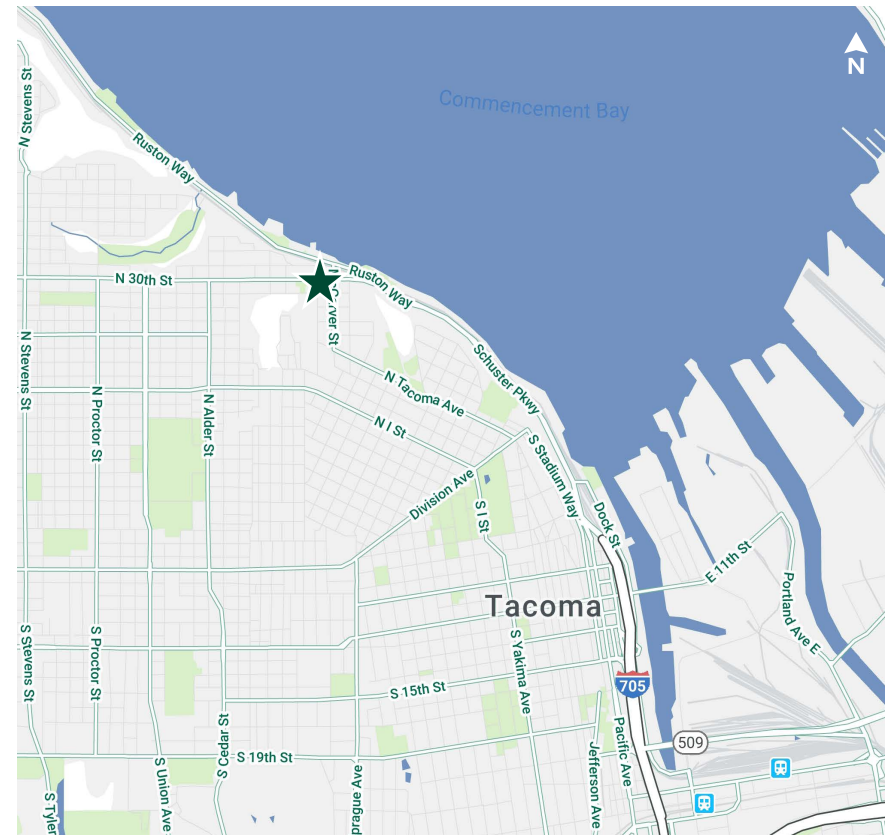
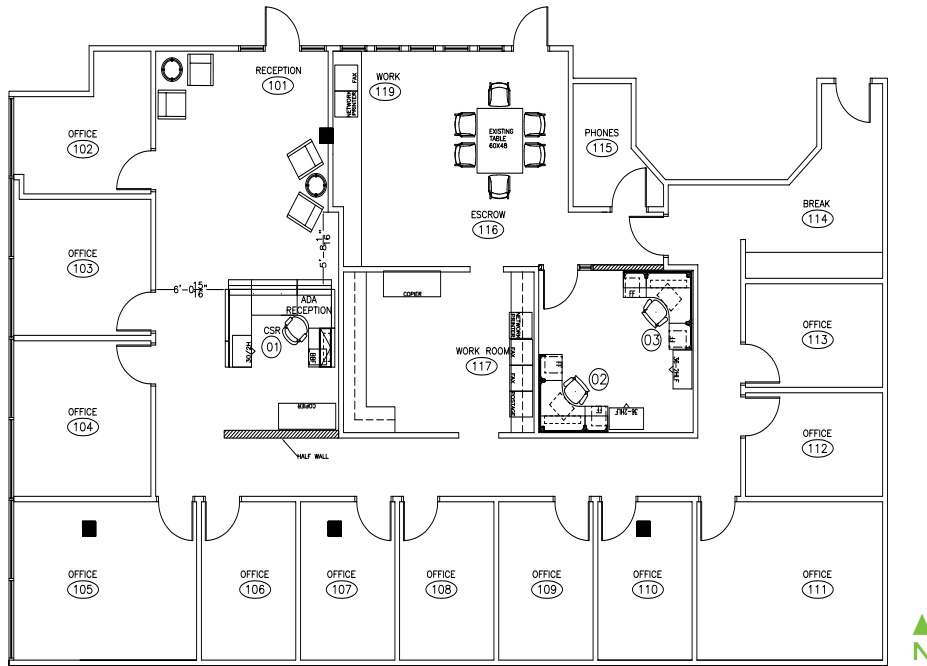
## PROPERTY INFO

- + Suite 100: ±3,551 RSF
- + \$20 PSF, NNN (\$8.79 PSF)
- + NNN's include janitorial and utilities
- + Available February 1, 2021
- + Signage available on the building
- + 4/1,000 free parking at building with 3 reserved, secure & covered spaces
- + Desirable location with waterfront, retail & restaurants in walking distance

[CLICK HERE TO VIEW VIRTUAL TOUR](#)



## FLOOR PLAN



### PLEASE CONTACT:

#### JOHN BAUDER

First Vice President  
 +1 253 596 0047  
[john.bauder@cbre.com](mailto:john.bauder@cbre.com)

#### HARRISON LAIRD

Vice President  
 +1 253 596 0030  
[harrison.laird@cbre.com](mailto:harrison.laird@cbre.com)

#### CBRE, INC.

1201 Pacific Avenue  
 Suite 1502  
 Tacoma, WA 98402

© 2020 CBRE, Inc. All rights reserved. This information has been obtained from sources believed reliable, but has not been verified for accuracy or completeness. You should conduct a careful, independent investigation of the property and verify all information. Any reliance on this information is solely at your own risk. CBRE and the CBRE logo are service marks of CBRE, Inc. All other marks displayed on this document are the property of their respective owners, and the use of such logos does not imply any affiliation with or endorsement of CBRE. Photos herein are the property of their respective owners. Use of these images without the express written consent of the owner is prohibited. RB 10.14.20