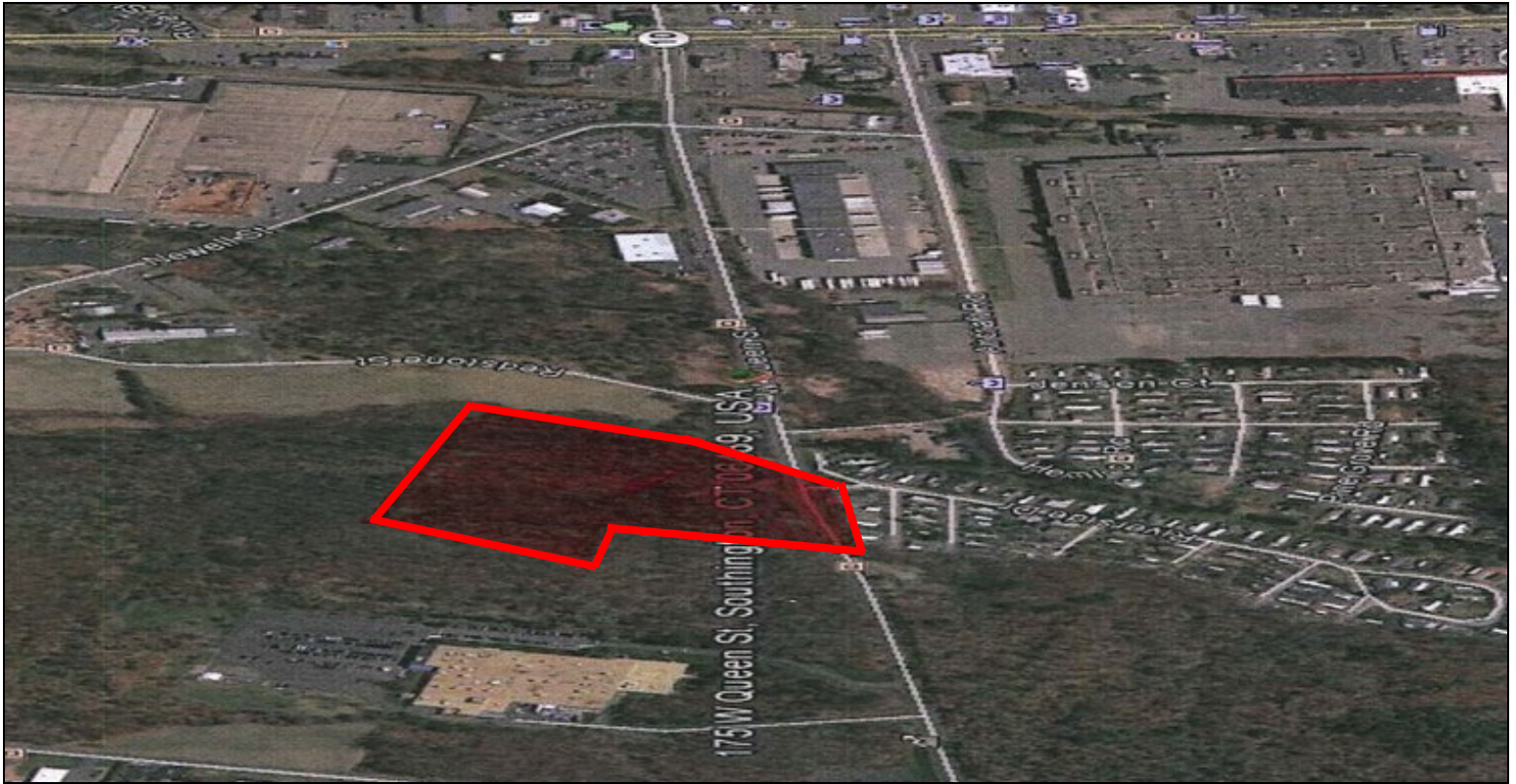


Industrial Land for Sale

145-175 West Queen Street • Southington, CT



New Industrial Park

Sentry Commercial is pleased to offer 145-175 West Queen Street, Southington for sale. This 27.47 acre site can accommodate buildings up to 20,000 square feet.

Approximate Building Size Per Lot:

1.	12,000 SF	6.	20,000 SF
2.	10,000 SF	7.	12,000 SF
3.	12,500 SF	8.	10,000 SF
4.	6,000 SF	9.	7,500 SF
5.	11,000 SF		

Property Features

- Located 1/2 mile from I-84
- Full utilities
- Lots 1-3 can be combined for up to 40,000 SF

Sale Price: \$875,000

Tom Worth

860.798.7651

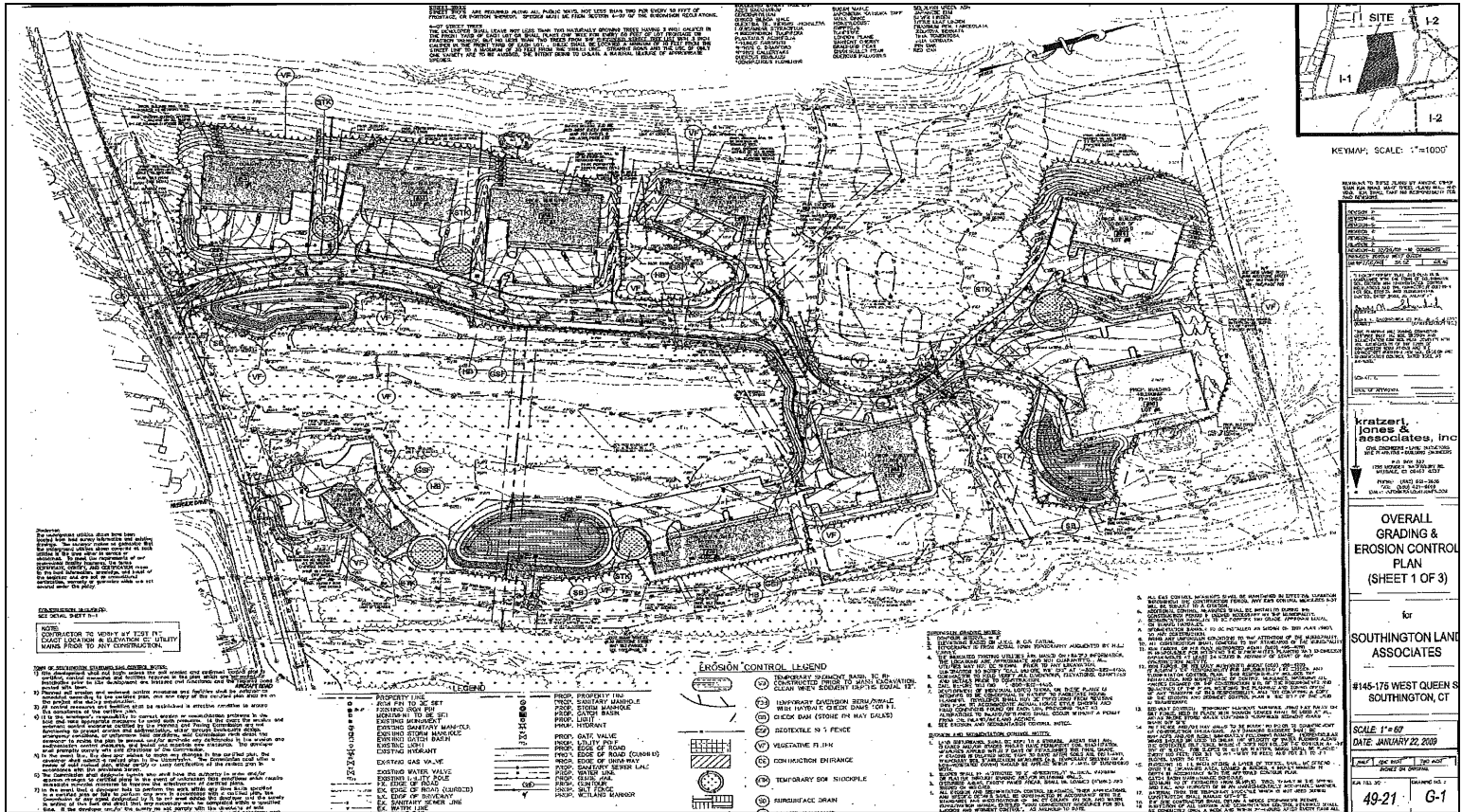
worth@sentrycommercial.com



Sentry Commercial
190 Trumbull Street
Hartford, CT 06103
860.528.0884

www.SentryCommercial.com

145-175 West Queen Street • Southington, Connecticut



Site

Acres: 27.47
 Minimum Lot Size: 1 acre
 Maximum Single Lot Size: 3.8 acres
 Building Size: 5,000 - 40,000 SF
 Rail: No
 Zoning: I-1

Utilities

Water: City
 Sanitary Sewer: City
 Gas: Yes

Taxes

Total taxes: \$9,189.00
 Assessment: \$334,380
 Year Assessed: 2012



Tom Worth
 860.798.7651
 worth@sentrycommercial.com

Sentry Commercial
 190 Trumbull Street
 Hartford, CT 06103
 860.528.0884
 www.SentryCommercial.com