



## MOUNTAIN VIEW PLAZA – 909 SIEVERS DUECY BLVD, EVERETT

### PROPERTY FEATURES

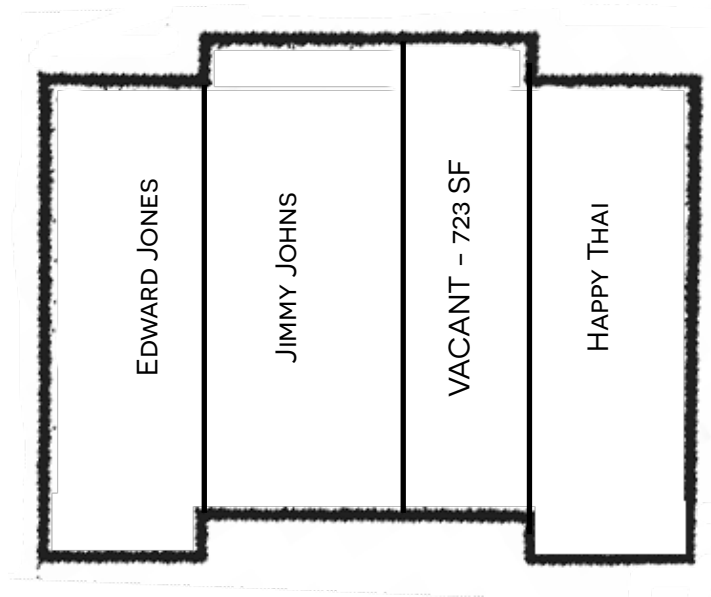
- BUILT IN 2008
- 4451 SF BUILDING
- 51,460 SF LOT
- 50 OPEN PARKING SPACES
- ADDITIONAL PAD SITE FOR FUTURE 3092 SF BUILDING WITH DRIVE THRU POTENTIAL
- NEARBY CLIENTELE FROM BOEING COMPANY MANUFACTURING PLANT, PAINE FIELD, SEAWAY CENTER BUSINESS AND INDUSTRIAL PARK



### MOUNTAIN VIEW PLAZA TENANTS

EDWARD JONES  
JIMMY JOHNS  
VACANT  
HAPPY THAI









PRESENTED BY:

KALEB REAL ESTATE GROUP  
12600 SE 38TH ST #102,  
BELLEVUE, WA 98006

TEL: 425.643.8557

FAX: 425.746.0855

EMAIL: [INFO@KALEBGROUP.COM](mailto:INFO@KALEBGROUP.COM)

EUI-JIN KIM

FOUNDER

206.229.6633

[EJKIM@KALEBGROUP.COM](mailto:EJKIM@KALEBGROUP.COM)

CHRISTINA CHONG

MANAGING BROKER

206.551.5909

[CCHONG@KALEBGROUP.COM](mailto:CCHONG@KALEBGROUP.COM)

