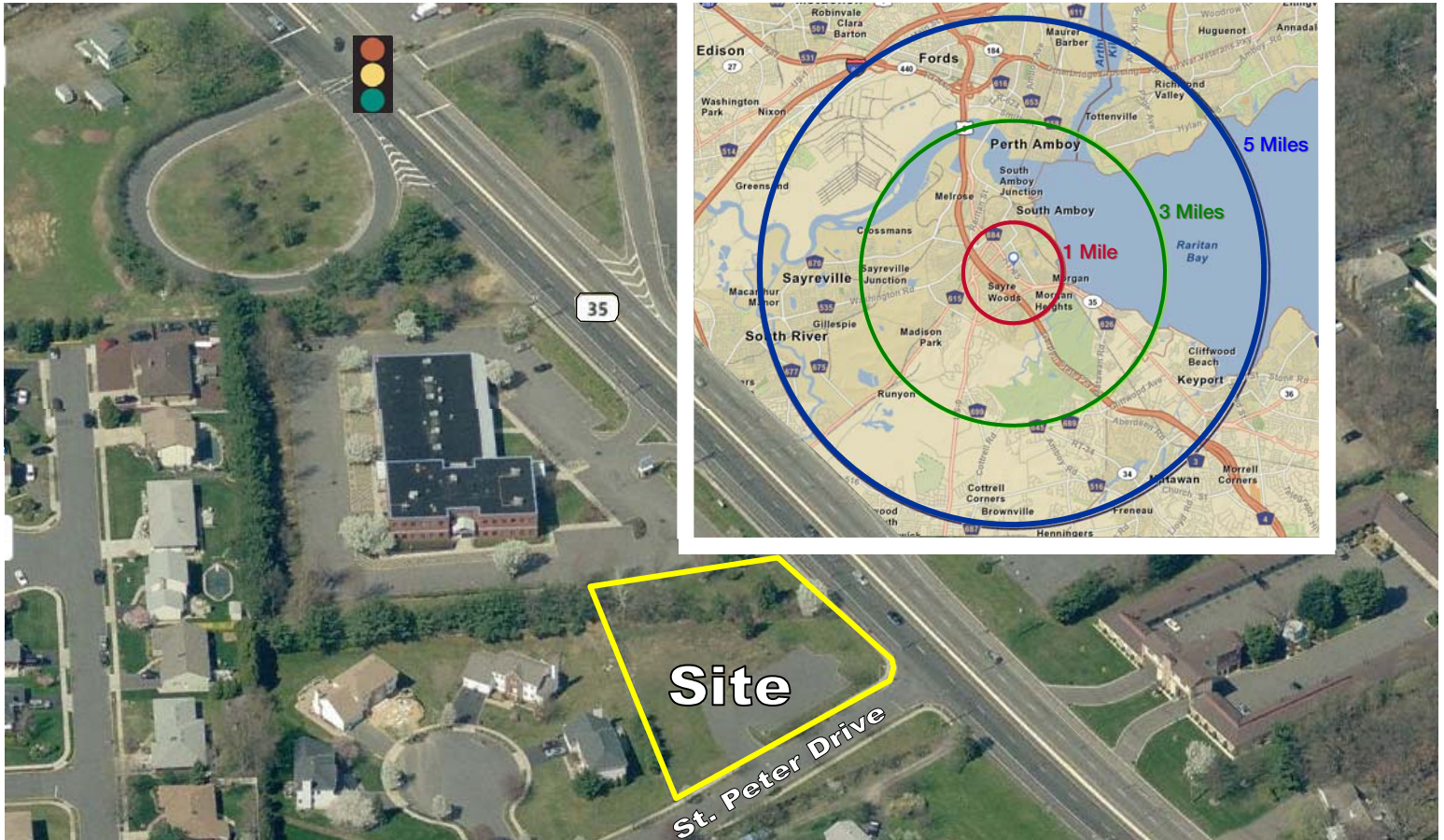


# Retail Pad Site Available

2 St. Peter Drive & Route 35, Sayreville, NJ



## PROPERTY FEATURES:

- .63 acre site available for sale or ground lease
- Site is level and cleared
- Zoned B-3 - Highway Business
- Great demographics and strong daytime population.
- Located along busy commuter corridor with 28,000 daily vehicle count.
- Close to signalized intersection.
- Property is located less than 3 miles from The Point at Sayreville, a 450+ acre planned re-development site featuring upscale residential units, office space, hotels, retail space and waterfront dining and entertainment.

For Further Information Please Contact Exclusive Broker:  
tel 732 985 3000

**NAIDiLeo-Bram & Co.**

Commercial Real Estate Services, Worldwide

1315 Stelton Road  
Piscataway, NJ 08854

[www.naidb.com](http://www.naidb.com)

Jeffrey Jones, VP, Ext. 214  
jjones@naidb.com

Faith Miller, VP, Ext. 229  
fmiller@naidb.com

Robert A. Dinner, Sr. VP, Ext. 232  
rdinner@naidb.com

# Retail Pad Site Available

2 St. Peter Drive & Route 35, Sayreville, NJ



DEMOGRAPHIC INFORMATION	1 Mile	3 Miles	5 Miles
Population Estimate	15,238	69,641	192,603
Average Household Income	\$72,657	\$64,231	\$66,503
Traffic Count	27,800 Vehicles Per Day		

## NAIDiLeo-Bram & Co.

Commercial Real Estate Services, Worldwide

1315 Stelton Road  
Piscataway, NJ 08854

[www.naidb.com](http://www.naidb.com)

For Further Information Please Contact Exclusive Broker:

tel 732 985 3000

Jeffrey Jones, VP, Ext. 214  
jjones@naidb.com

Faith Miller, VP, Ext. 229  
fmiller@naidb.com

Robert A. Dinner, Sr. VP, Ext. 232  
rdinner@naidb.com