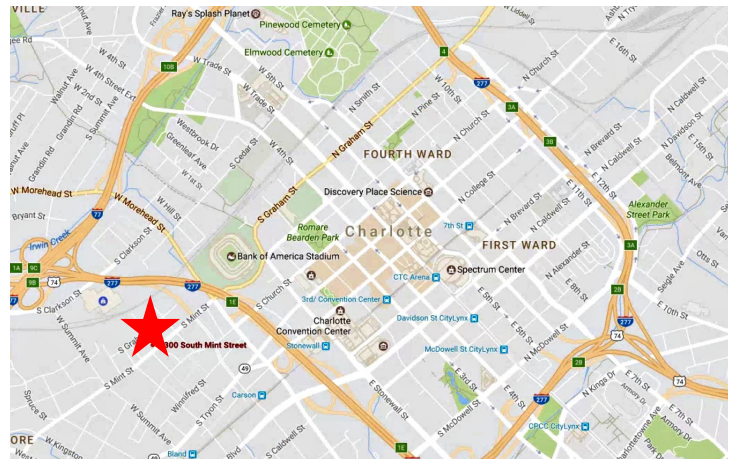


WHITESIDE PROPERTIES INCORPORATED

For Sale or Lease
1300 S Mint St. Suite 100
Charlotte, NC 28203



Property Highlights:

- $\pm 5,543$ SF to $\pm 8,424$ SF available
- Historic textile building from 1920 on ± 1.36 acres
- Located in the Gold District of Historic South End, near uptown Charlotte
- Within walking distance of Carson Light Rail Station & Bank of America Stadium
- Near restaurants, shopping & entertainment

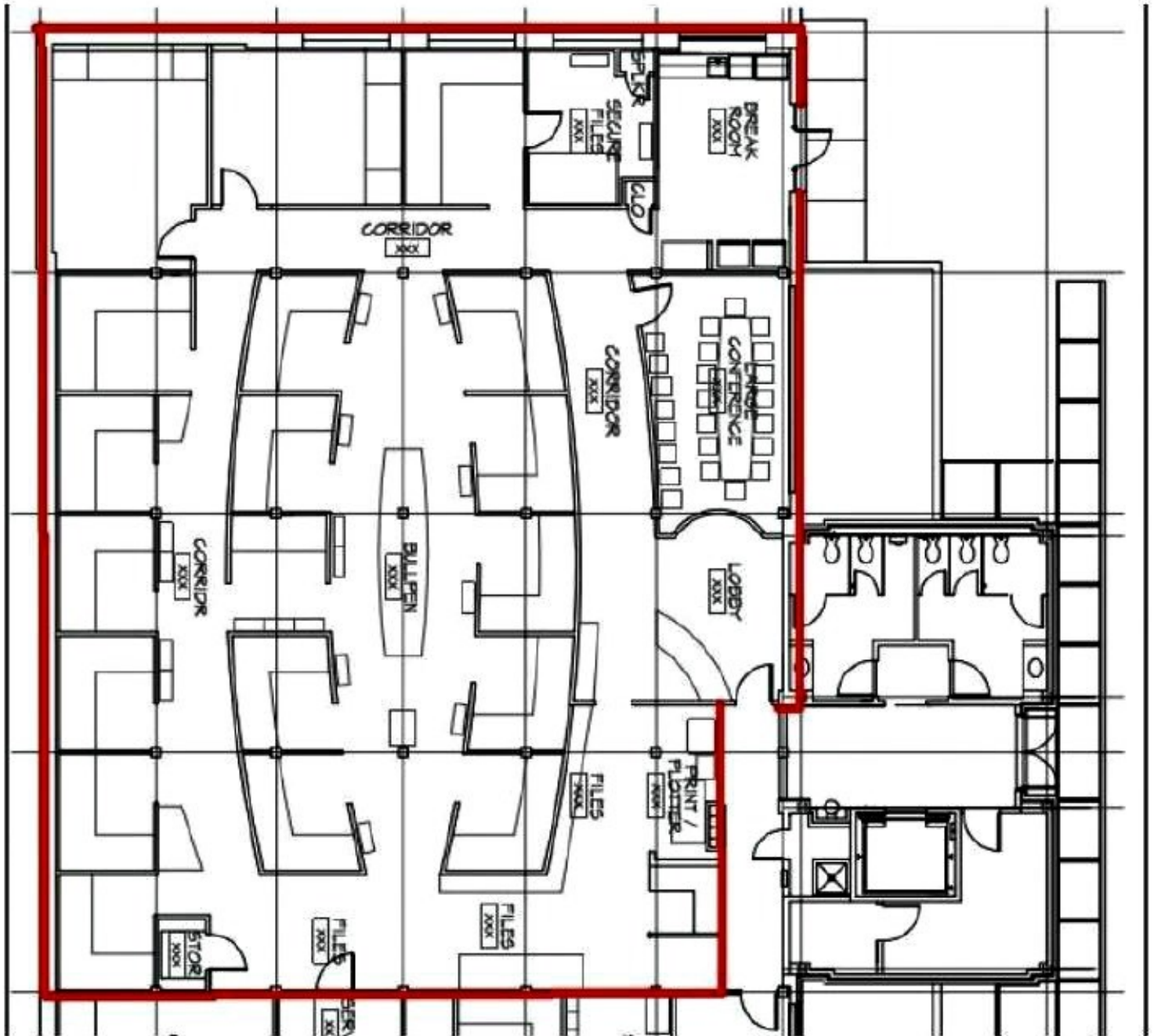
$\pm 5,543$ SF with expansion capabilities up to $\pm 8,424$ SF

\$23.50 psf Lease Rate
\$1,875,000 Asking Price

For more information contact:
Brooks Whiteside - 704.347.4676 ext. 210
Brooks@WhitesideIndustrial.com

All information regarding property for sale, rental, financing is from sources deemed reliable but no warranty or representation is made as to the accuracy thereof and same is subject to change of price omissions, errors or other conditions prior to sale, lease, or withdrawal.

1300 S Mint St, Suite 100 Floor Plan



WHITESIDE PROPERTIES INCORPORATED

For Sale or Lease
1300 S Mint St. Suite 100
Charlotte, NC 28203



All information regarding property for sale, rental, financing is from sources deemed reliable but no warranty or representation is made as to the accuracy thereof and same is subject to change of price omissions, errors or other conditions prior to sale, lease, or withdrawal.